



RETAIL BROKERAGE SERVICES
HOLLY CHETWOOD CCIM
(208) 947-0827 | holly@tokcommercial.com

COMMERCIAL

EXPERIENCE:

Since 2010, Holly Chetwood has been practicing commercial real estate. She joined the TOK Commercial retail group in 2015, after working in northern Idaho and eastern Washington markets.

Holly represents retail, investment, and land clients. Her expertise encompasses extensive retailer, restaurant, site selection, tenant and landlord advisory services. Holly's national clients have included; Spring Education Group, Half Price Books, Kids Empire, P.F. Changs, Jamba Juice and Wienerschnitzel.

Holly's landlord representation is focused on efficiently filling vacant space with quality credit tenants.

Additionally, Holly represents her owner clients in the disposition of both stabilized and value add properties. She focuses on achieving vibrant, competitive retail centers filled with strong, thriving businesses within the market through marketing strategy creation and implementation.

TOTAL TRANSACTIONS

224

TOTAL CONSIDERATION

\$92.6M

TOTAL SF LEASED

553K

PROFESSIONAL & COMMUNITY ACTIVITIES:

- Retail Brokers Network, Northwest Tenant Council Representative
- International Council of Shopping Centers (ICSC), member
- Member of Urban Land Institute (ULI)
- Leadership Boise, Graduate, Boise Chamber of Commerce
- Past President & Board Member, Moscow Chamber of Commerce
- Past Member, Board of Directors, Ronald McDonald House of Idaho

EDUCATION:

Holly obtained the Certified Commercial Investment Member (CCIM) designation, in the fall of 2018. This accreditation offers in-depth instruction in financial analysis, market analysis, investment analysis and negotiations.

Holly holds her BA in English from the University of Puget Sound.



PERSONAL:

Holly and her family enjoy all that living in Idaho has to offer. In her free time, you'll find her attending her children's sporting events or skiing, playing tennis, and entertaining friends. Holly also loves to travel and has a lifelong devotion to the arts.



LANDLORD REPRESENTATION THE OWYHEE BUILDING

60,060 SF Multi-tenant building
Retail spaces in iconic downtown building

HOLLY CHETWOOD CCIM LEASING REPRESENTATION EXPERTISE

(208) 947-0827 | holly@tokcommercial.com



EAGLE MARKETPLACE
EAGLE

Landlord Representation
59,839 SF multi-tenant strip center
From 50% vacant to 100% occupied



HILLCREST SHOPPING CENTER
BOISE

Owner | Landlord Representation
168,693 SF multi-tenant strip center
Revitalization of 30% vacant property



CHERRY PLAZA
BOISE

Landlord Representation
113,970 SF multi-tenant strip center
4 leases | 15,000 SF filled | 85% occupied



FORMER SHOPKO
IDAHO FALLS

Landlord Representation
90,510 SF big box retail
Large big box lease



COMMERCIAL



SELLER REPRESENTATION SIERRA TRADING POST

Single tenant Mid-Box
Investment Sale

HOLLY CHETWOOD CCIM LANDLORD/SALE TRANSACTION EXPERTISE

(208) 947-0827 | holly@tokcommercial.com



VILLA SHOPS
TWIN FALLS

Seller Representation
Multitenant Retail Strip Center
Investment Sale



1117 WINDING CREEK
EAGLE

Seller Representation
Multitenant Retail Strip Center
Investment Sale



EINSTEIN'S OILERY
MERIDIAN

Buyer Representation
Single tenant, NNN leased investment
4 - Investment Sale(s) & Lease-back



12TH AVENUE SOUTH SHOPS
NAMPA

Seller Representation
Multitenant Retail Strip Center
Sale



COMMERCIAL



TENANT REPRESENTATION

TAZIKI'S

National restaurant retailer

Holly represents Taziki's across Idaho

[Site Selection](#)

HOLLY CHETWOOD CCIM TENANT REPRESENTATION EXPERTISE

(208) 947-0827 | holly@tokcommercial.com



Tenant Representation
National Retailer
[Site Selection](#)



Tenant Representation
Regional Retailer
[Site selection](#)



Tenant Representation
National Retailer
[Site Selection](#)



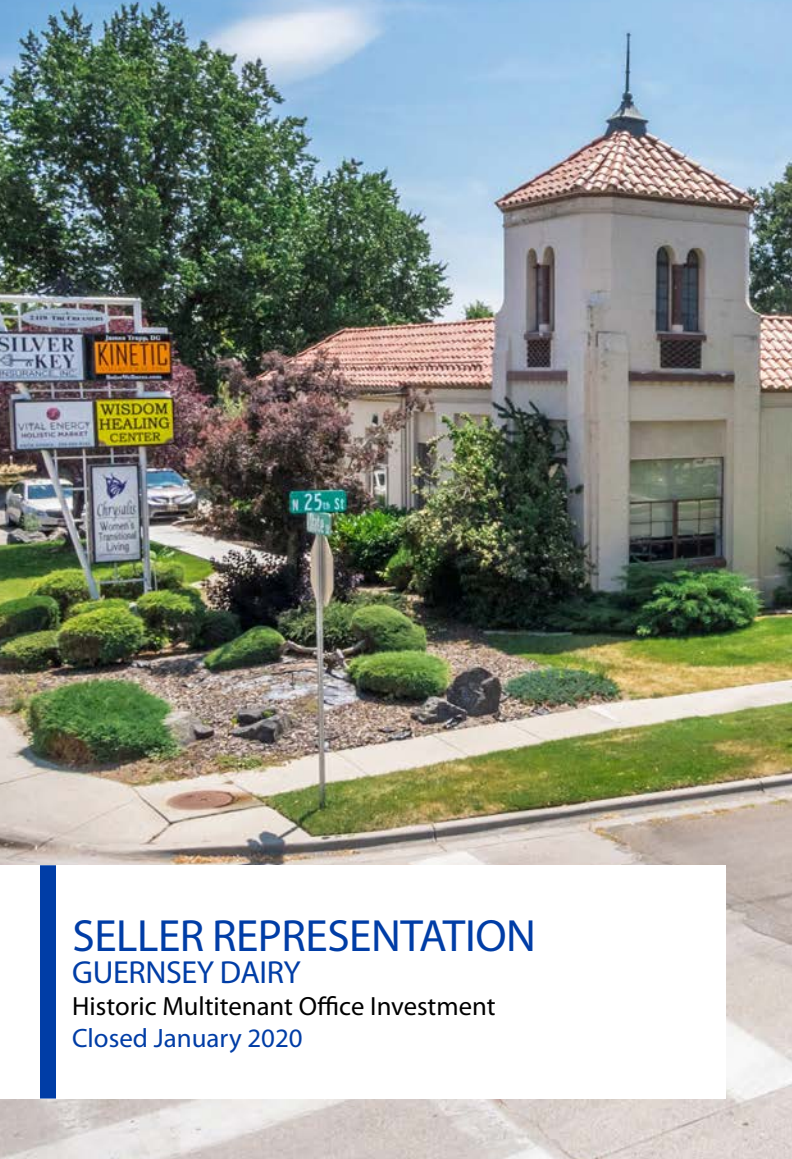
Tenant Representation
National Retailer
[Site Selection](#)



Tenant Representation
National Retailer
[Site Selection](#)



Tenant Representation
National Fitness Retailer
[Site Selection](#)



SELLER REPRESENTATION
GUERNSEY DAIRY
Historic Multitenant Office Investment
Closed January 2020



U.S. BANK ON VISTA
BOISE

Multitenant Retail Investment
Seller Representation
Closed February 2021



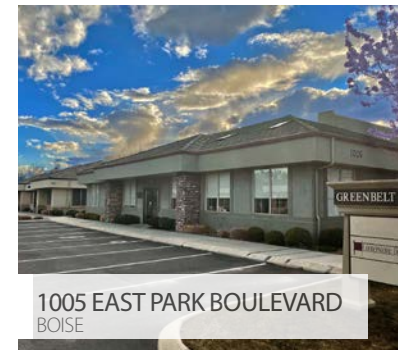
813 & 815 S. VISTA
BOISE

4,141 SF Retail Building
Buyer Representation
Closed December 2019



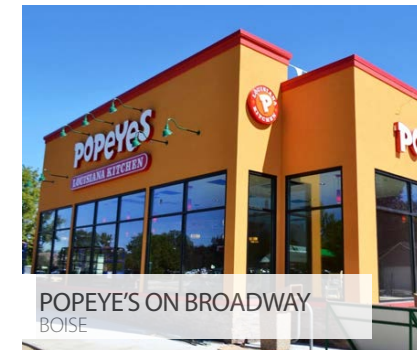
11595 STATE STREET
STAR

Single Tenant Retail Building
Seller Representation
Closed January 2020



1005 EAST PARK BOULEVARD
BOISE

Single Tenant Office Investment
Buyer Representation
Closed June 2020



POPEYE'S ON BROADWAY
BOISE

Single Tenant Retail Building
Buyer Representation
Closed December 2020



177 CALDWELL BOULEVARD
NAMPA

Land Lease Investment
Seller Representation
Closed November 2020



1220 STATE STREET
BOISE

Iconic Retail | Flex Property
Seller Representation
Closed August 2020



5022 FAIRVIEW
BOISE

Multitenant Retail Investment
Buyer Representation
Closed December 2020