



COMMERCIAL

BROKERAGE SERVICES

**MARK SCHLAG** CCIM, CLS

(208) 947-0817 | marks@tokcommercial.com

**EXPERIENCE:**

Mark Schlag has been a retail and investment specialist at TOK Commercial since 1993. Primary areas of expertise include retail landlord and tenant representation, retail investment sales and development services, including site assemblage.

Mark started his career in commercial real estate while completing his degree at Seattle University. Upon returning to Boise, Mark was recruited by the original founding partners of TOK Commercial as a retail specialist. A reputation for superior customer service and an ability to creatively approach the objectives of his clients has earned Mark a distinguished reputation within the local industry.

Mark has participated in numerous projects including the development, lease up and subsequent sale of the 71,000 square foot mixed-use One Front Street building; the acquisition and redevelopment of the 118,000 square foot Cole Village Shopping Center; and has increasingly developed notable national representation accounts including Chase Bank, Bank of America, Chipotle Mexican Grill, Firestone Tire, Duluth Trading Company, SleepTrain and multiple others.

TOTAL TRANSACTIONS

**647**

TOTAL CONSIDERATION

**\$270M**

YEARS IN BROKERAGE

**28**

**PROFESSIONAL & COMMUNITY ACTIVITIES:**

Mark maintains membership within the following organizations: International Council of Shopping Centers (ICSC) where he has attained the certification of Certified Leasing Specialist; CCIM Institute as the former President of the Idaho Chapter of CCIM; and is a member of the Boise Metro Chamber of Commerce (transportation committee).

**EDUCATION:**

Mark graduated from Seattle University in 1993 Magna Cum Laude with a Bachelor of Arts in Business Administration in Finance and Economics.



**PERSONAL:**

Mark resides in Boise with his family. An avid outdoorsman, Mark's time away from the office is spent with family and friends fly-fishing, skiing, running, backpacking and pursuing all that the Idaho outdoors have to offer.



COMMERCIAL



### LANDLORD | OWNER REPRESENTATION COLE VILLAGE SHOPPING CENTER

127,000 SF Multitenant neighborhood center  
Mark has represented the property since 2001  
57 leases | Redevelopment efforts included opening Idaho's  
1st Walmart Neighborhood Market

# MARK SCHLAG CCIM, CLS LANDLORD REPRESENTATION EXPERTISE

Phone: (208) 947-0817 | marks@tokcommercial.com



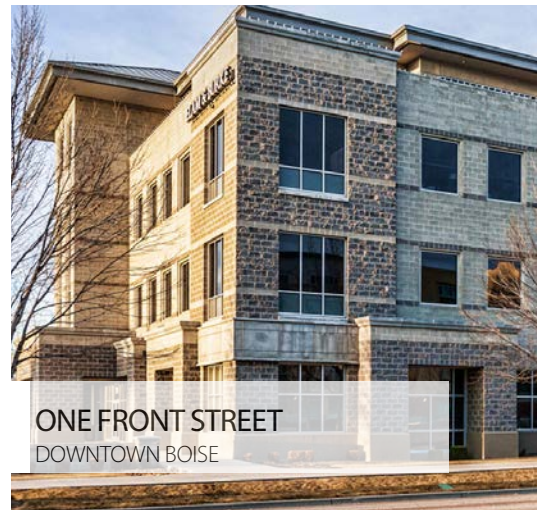
WESTGATE SHOPPING CENTER  
WEST BOISE

Landlord Representation  
67,000 SF Multitenant Shopping Center  
2001-Present



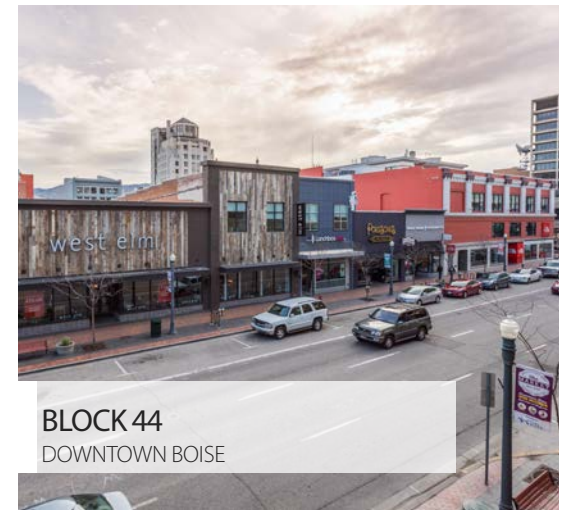
SIMPLOT HEADQUARTERS  
DOWNTOWN BOISE

Landlord Representation  
7,500 SF Corporate Headquarters Ancillary Space  
7,500 SF Restaurant Lease



ONE FRONT STREET  
DOWNTOWN BOISE

Landlord Representation  
77,000 SF Mixed Use Building  
2001-2005



BLOCK 44  
DOWNTOWN BOISE

Landlord Representation  
Downtown Block - Retail and Mixed Use  
2015-Present



COMMERCIAL



### OWNER REPRESENTATION ONE FRONT STREET

70,000 SF  
Multitenant office building located in Downtown Boise  
DEVELOPMENT, LEASE-UP AND SALE (6 YEARS)

# MARK SCHLAG CCIM, CLS INVESTMENT TRANSACTION EXPERTISE

Phone: (208) 947-0817 | marks@tokcommercial.com



COLE VILLAGE SHOPPING CTR.  
118,000 SQUARE FEET

Buyer & Owner Representation  
Multitenant Retail Shopping Center  
Disposition & Purchase



RAM PLAZA  
16,181 SQUARE FEET

Owner Representation  
Multitenant Retail Shopping Center  
Investment Sale



1515 W. STATE ST.  
4,659 SQUARE FEET

Owner Representation  
Retail Shops  
Investment Sale



STONEHENGE PLAZA  
50,000 SQUARE FEET

Owner Representation  
Multitenant Retail Shopping Center  
Investment Sale

# TOK

COMMERCIAL

## MARK SCHLAG CCIM, CLS TENANT REPRESENTATION EXPERTISE

Phone: (208) 947-0817 | marks@tokcommercial.com

### Bank of America



Tenant Representation  
Financial services national retailer  
5 units opened | 2004 - 2009

### Firestone

Tenant Representation  
National automotive  
2019 - Present

### SleepCountry

USA

Tenant Representation  
National retailer  
6 units opened | 2010 - Present



Tenant Representation  
National restaurant  
5 units opened | 2014 - Present

### TENANT REPRESENTATION

#### CHASE BANK

Financial services national retailer  
Mark represents Chase Bank across Idaho  
3 units opened | Boise, Nampa, Meridian



COMMERCIAL



### TENANT REPRESENTATION AUTOZONE

National Automotive Parts Retailer  
Mark represents AutoZone across Idaho  
5 units opened | Boise, Nampa, Caldwell, Chubbuck

# MARK SCHLAG CCIM, CLS TENANT REPRESENTATION EXPERTISE

Phone: (208) 947-0817 | marks@tokcommercial.com



Regional Bank  
December 2018



Regional Bank  
Present



National Restaurant  
3 units opened | Boise & Meridian



National Retailer  
Present



National Coffee Retailer  
2 units opened | 2005 - Present



National Restaurant  
4 units opened | 1998-Present



COMMERCIAL



**Fred Meyer**

### TENANT REPRESENTATION

CHASE BANK

1 Acre | 3,500 SF Built to Suit

1 Acre | 3,500 SF Ground Lease

April 2020

# MARK SCHLAG CCIM, CLS RECENT MARKET TRANSACTIONS

Phone: (208) 947-0817 | marks@tokcommercial.com



**SIMPLOT HEADQUARTERS**  
DOWNTOWN BOISE

7,500 SF Restaurant Lease | Anthony's  
Landlord Representation  
April 2019



**ASHTON ESTATES**  
KUNA

Anchor Pad Sale | CapEd, Primary Health, Panda Express  
Seller Representation  
April 2019



Retail Branch Renewal | Karcher Mall | Nampa  
Tenant Representation  
December 2018



**WESTGATE SHOPPING CENTER**  
BOISE

1.5 Acre Pad Sale | CVS Pharmacy  
Seller Representation  
November 2018