



AL MARINO
SIOR

**CONTACT
INFORMATION:**

Phone: (208) 947-0811
al@tokcommercial.com
www.tokcommercial.com

EXPERIENCE:

Al Marino is one of Boise's highest performing brokers and is one of the most prominent office specialists in Idaho. Al joined Thornton Oliver Keller in 2004 and became a partner in 2006, he served as Managing Partner from 2008 to 2010. Al has completed over 480 transactions with total consideration value in excess of \$408 million. He was awarded "Top Producer" for the firm in 2006, the "Top Producer – Bronze" award in 2010 and was recognized with the "Top Producer – Third Place" award in 2011. In 2015, Al was ranked #46 in the worldwide SIOR "Top 100" office transactions.

With over 19 years of experience his vast knowledge of the market is significant from both the owner/investor perspective to the tenant/user. Al has worked closely with diverse clients and his real estate savvy is valuable and noteworthy in property sales, leasing, site selection, acquisition, and disposition.

A veteran dealmaker, Al thrives when he is helping companies with facility decision making and he is committed to finding solutions to his client needs. Al has helped create and has been involved in some of the most significant deals in Boise. His vision and comprehensive value-add approach has been key to his success. Al's work ethic, vast network of contacts and A-list properties where he has successfully boosted occupancy, combined with appreciation and understanding of the subtleties of commercial real estate continually make him central to his client's business needs.

Prior to joining Thornton Oliver Keller, Al was an office specialist from 1999 to 2004 with Colliers International. Before relocating to Boise, Al was the Product Manager with Adidas-Salomon/North America, Inc., and was responsible for launching several snow sports products such as "X-Scream", which became the best-selling ski in the USA market.

AL MARINO, SIOR BROKERAGE SERVICES

FIRM PARTNER SINCE 2006

EDUCATION:

Al received a Bachelor of Science in Business Administration/Marketing from California State University, Sacramento. He holds a current real estate license in the State of Idaho and is an SIOR (Society of Industrial and Office Realtors) member.

PROFESSIONAL & COMMUNITY ACTIVITIES:

- Society of Industrial and Office Realtors (SIOR), Member.
- Certified Commercial Investment Member (CCIM), Candidate.
- Urban Land Institute (ULI), Advisory Board, Idaho Chapter.
- Endowment Land Transaction Advisory Committee (ELTAC), appointed by Governor Otter and the Idaho State Board of Land Commissioners.
- Building Owners and Managers Association (BOMA), Member.
- Boise Metro Chamber of Commerce, Member.
- Idaho District 2 Little League, Umpire and Trainer.
- North Boise Little League, past Board of Directors, Coach, Umpire.
- Bishop Kelly Baseball - American Legion Board, President.

FAMILY, HOBBIES AND INTERESTS:

Al resides in Boise with his wife, Laurel, and two sons, Justin and Jack. His hobbies include skiing, cycling, golf and mountain sports.

AL MARINO, SIOR

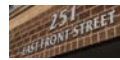
SATISFIED CLIENTS

SALES TRANSACTIONS (PARTIAL)

WDS/XEROX CALL CENTER
72,000 SF - office investment



ONE FRONT STREET
70,000 SF - office investment



HP DATA CENTER
60,000 SF - industrial investment



PINEBRIDGE MED-TECH PARK
35 acres - Scentsy corporate campus



PINEBRIDGE MED-TECH PARK
4 acres - PKG corporate campus



SAINT ALPHONSUS REGIONAL MEDICAL CTR
6,000 SF - medical office



AFFORDABLE SELF STORAGE
85,000 SF - industrial investment



VENGAWORKS BUILDING
15,000 SF - office user



EMERALD TECH CENTER C & D
71,000 SF



ST. LUKE'S REGIONAL MEDICAL CENTER
117 acres - future hospital development



LEASE TRANSACTIONS (PARTIAL)

PAYLOCITY CORPORATION
62,000 SF - Ten Mile Crossing



ST. LUKE'S REGIONAL MEDICAL CTR.
147,000 SF - Washington Group Plaza



STATE OF IDAHO - TAX COMMISSION
111,000 SF - Washington Group Plaza



LAMB WESTON
45,000 SF - Rivershore North



J.R. SIMPLOT CO.
17,000 SF - CSC Building



BMC SELECT
27,000 SF - Washington Group Plaza



REGENCE BLUESHIELD OF IDAHO
25,000 SF - Capitol Gateway Plaza



ALASKA AIRLINES
10,000 SF - Blackeagle Business Park



CONAGRA FOODSERVICE, INC.
25,000 SF - Rivershore North



KEY BANK
35,000 SF - Key Financial Center



WELLS FARGO DEALER SERVICES
12,500 SF - Parkway Plaza



AL MARINO, SIOR SELECT TRANSACTIONS

482 Transactions • \$408,900,000 Consideration

THE VILLAGE AT MERIDIAN



LEASED
40,805 SF Office Space leased to MarkMonitor

WDS/XEROX CALL CENTER



SOLD
72,687 SF Call Center

TEN MILE CROSSING



LEASED
Represented Paylocity in leasing 62,000 SF

ONE FRONT STREET



SOLD
70,000 SF Multitenant Office Building

WASHINGTON GROUP PLAZA



LEASED
147,000 SF Office Space leased to St. Luke's

HOSPITAL DEVELOPMENT LAND



SOLD
117 Acres Development Land

PINEBRIDGE LAND



SOLD
47 Acre Corporate Campus

BANNER BANK BUILDING



LEASED
16,570 SF Office Space leased to NYK Line

EMERALD CORPORATE PARK



SOLD
5 Buildings (83,700 SF combined)

TENANT REPRESENTATION



LEASED
Represented TP USA Inc. in leasing 60,424 SF

BOISE CALL CENTER



SOLD
60,424 SF Call Center

EMERALD TECH CENTER C & D



SOLD
2 Buildings (70,920 SF combined)