

Wells Street Land

942 S Wells St - Meridian, ID

LAND FOR SALE



Listing Comments:

Great freeway exposure with access to I-84 and Eagle Road.

Close proximity to St Lukes, El Dorado and Silverstone Business Parks and other amenities.

Parcels may be sold separately.

Available:

Size:	Parcel 1: 5.29 Acres Parcel 2: 5.07 Acres Total: 10.36 Acres
Total Price:	\$4,174,355
Zoning:	RUT
Utilities:	To Site

Contact:

Mike Greene, CCIM

PH: 208.947.0835

FX: 208.947.0869

mikeg@tokcommercial.com

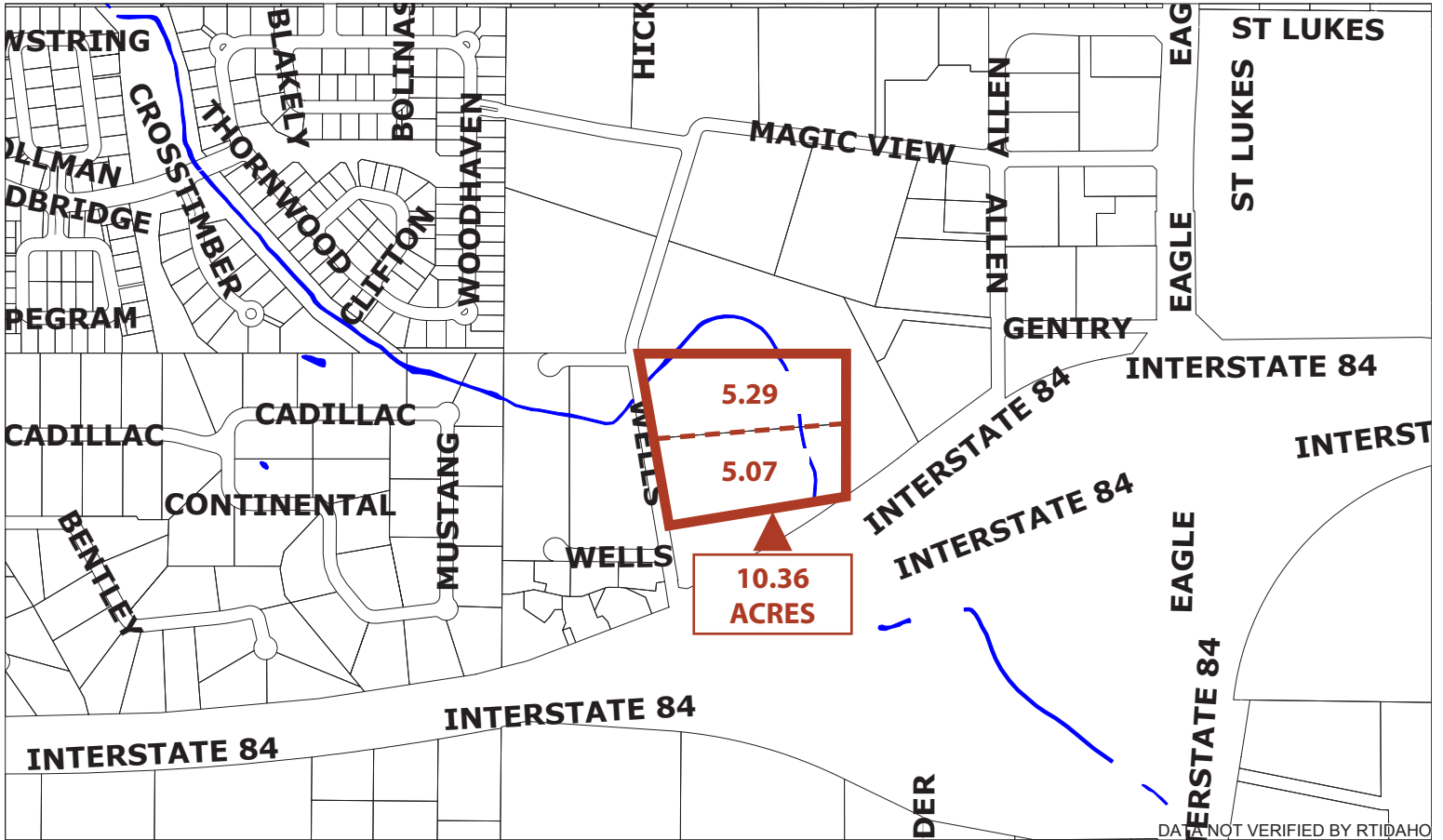
www.tokcommercial.com



Wells Street Land

942 S Wells St - Meridian, ID

LAND FOR SALE



This information was obtained from sources believed reliable but cannot be guaranteed. Any opinions or estimates are used for example only.