

Veltex Building

420 Main Street - Boise, ID

OFFICE SPACE FOR SUBLEASE



Property Information:

Submarket: Downtown
Available: Immediately
Bldg Type: Office/Retail
Quality: Class A
Bldg Size: 50,000 SF
Divisible: Yes
of Floors: 4
Parking: Public

SubLease Terms:

SubLease Term: 3-5 years
SubLease Type: FLSVEJ
TI Allowance: As Is

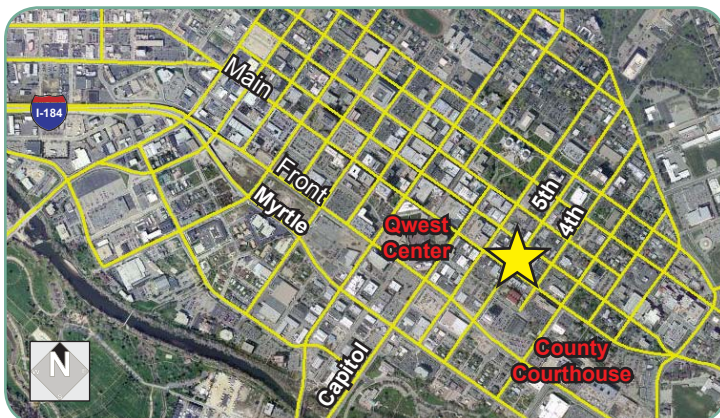
Listing Comments:

- Located in Downtown Boise.
- Excellent corner location at 5th St. and Main St.
- Close to all services.
- Great space for creative, advertising or marketing firms.
- Covered parking available; 3 spaces for \$166 per month.
 *Parking available with Suite 202 only.
- Abundant natural light.
- Sublease term through 12/31/15.

Available Space:

SPACE:	RSF:	RATE:
Suite 202	1,820 SF	\$19.00/SF
Suite 203	1,648 SF	\$19.00/SF

Suite 202 and Suites 203 can be combined for 3,468 SF.



Contact:

Peter Oliver, SIOR, CCIM
 Ph: 208.947.0816
 Fx: 208.947.0869
 peter@tokcommercial.com
 www.tokcommercial.com



Mike Greene, CCIM
 Ph: 208.947.0835
 Fx: 208.947.0869
 mikeg@tokcommercial.com
 www.tokcommercial.com

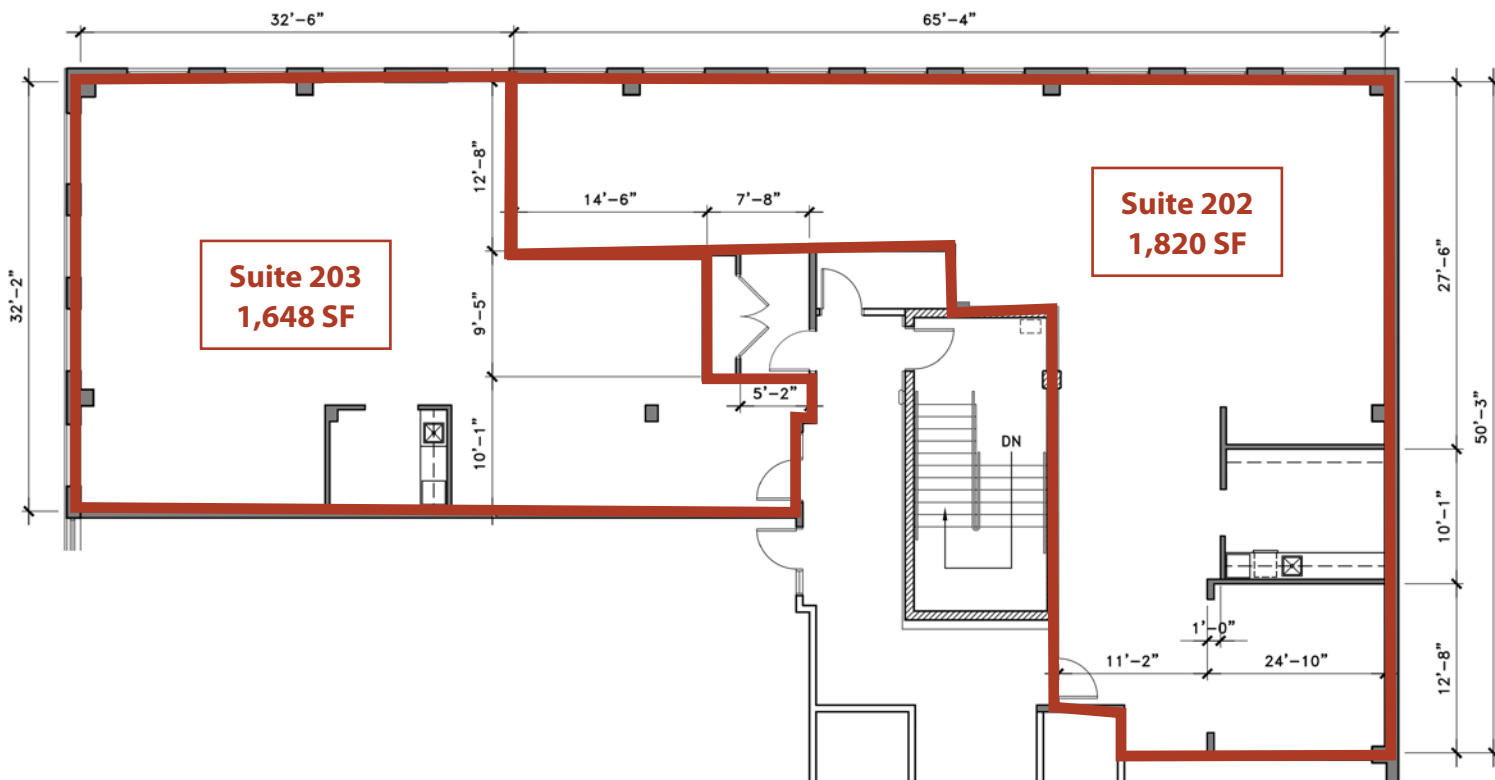


Veltex Building

420 Main Street - Boise, ID
OFFICE SPACE FOR SUBLEASE

SECOND FLOOR

Suites can be combined
for 3,468 SF



This information was obtained from sources believed reliable but cannot be guaranteed. Any opinions or estimates are used for example only.