

Veltex Building

420 Main Street - Boise, ID
OFFICE SPACE FOR LEASE



Property Information:

Submarket: Downtown
Available: Immediately
Bldg Type: Office
Quality: Class A
Bldg Size: 50,000 SF
Divisible: Yes
of Floors: 4
Parking: Public

Lease Terms:

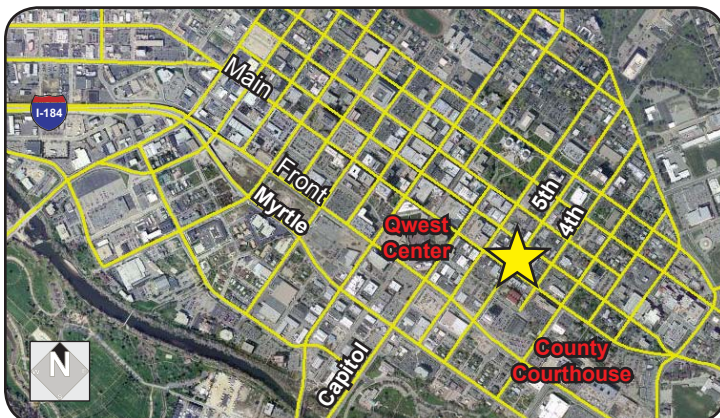
Lease Term: 3-5 years
Lease Type: FLSV
TI Allowance: As Is

Listing Comments:

Located in the Downtown Boise CBD.
Iconic corner location at 5th St. and Main St.
2 garage parking spaces included at no charge.
3rd floor corner space with views.
Class A finishes throughout.

Available Space:

SPACE:	RSF:	RATE:
Suite 301	2,559 SF	\$18.00/SF



Contact:

Greg Gaddis
Ph: 208.947.0827
Fx: 208.947.0869
greg@tokcommercial.com
www.tokcommercial.com

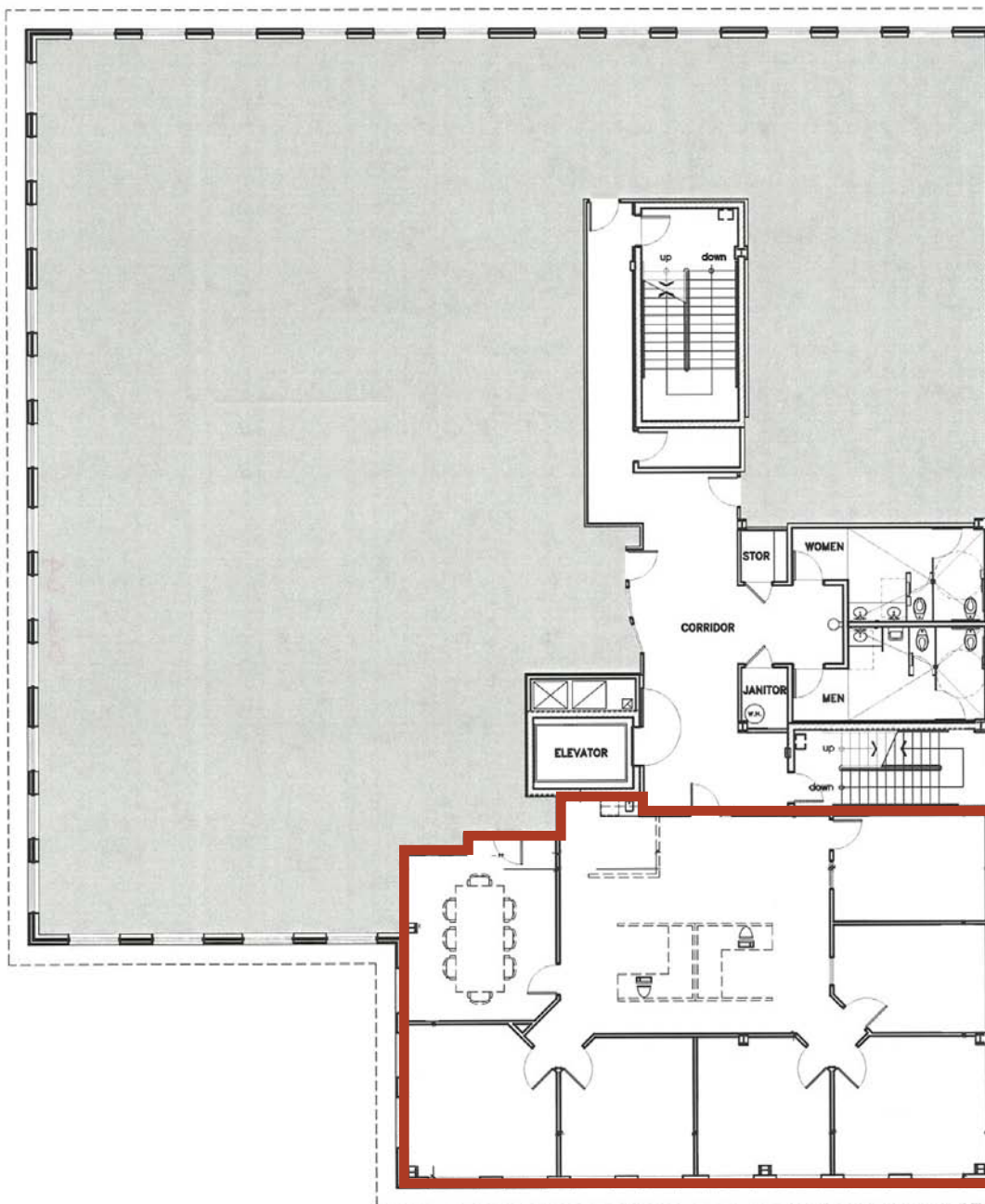
Al Marino, SIOR
Ph: 208.947.0811
Fx: 208.947.0869
al@tokcommercial.com
www.tokcommercial.com



Veltex Building

420 Main Street - Boise, ID
OFFICE SPACE FOR LEASE

Suite 301
2,559 SF



This information was obtained from sources believed reliable but cannot be guaranteed. Any opinions or estimates are used for example only.