

UNA ROSA SUBDIVISION LAND

N. 18TH STREET & E 12TH STREET N., MOUNTAIN HOME, ID 83647

DEVELOPMENT LAND FOR SALE



THORNTON OLIVER KELLER
COMMERCIAL REAL ESTATE

Experience Results.

CONTACT:

Michael Ballantyne, CCIM

PH: 208.947.0831

FX: 208.947.0869

mjb@tokcommercial.com

www.tokcommercial.com

Lenny Nelson

PH: 208.947.0806

FX: 208.947.0869

lenny@tokcommercial.com

www.tokcommercial.com



AVAILABLE:

Size: 22.121 ± Acres

Price: Contact Agent

Zoning: Preliminary Plat Approved For 34 Lots

COMMENTS:

- Adjacent to Mountain Home Golf Course
- Construction Drawings Submitted for Final Plat
- City Water on Site, City Sewer Near Site
- City Walking Path

(07/05/11)

This information was obtained from sources believed reliable but cannot be guaranteed. Any opinions or estimates are used for example only.

UNA ROSA SUBDIVISION LAND

N. 18TH STREET & E 12TH STREET N., MOUNTAIN HOME, ID 83647

DEVELOPMENT LAND FOR SALE

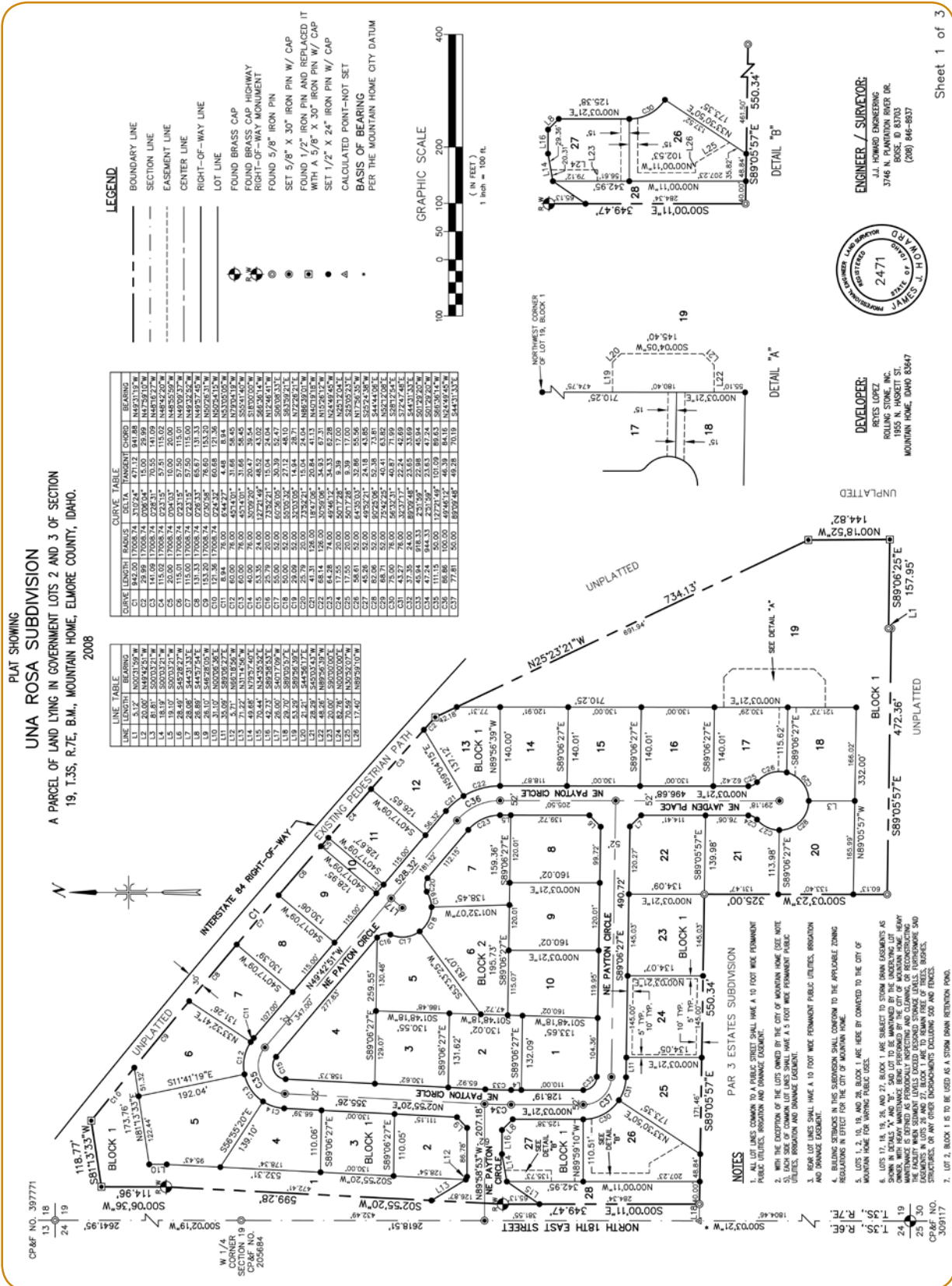


This information was obtained from sources believed reliable but cannot be guaranteed. Any opinions or estimates are used for example only.

UNA ROSA SUBDIVISION LAND

N. 18TH STREET & E 12TH STREET N., MOUNTAIN HOME, ID 83647

DEVELOPMENT LAND FOR SALE



This information was obtained from sources believed reliable but cannot be guaranteed. Any opinions or estimates are for example only.