

# Taylor Commerce Park - Bldg 1

1100 Taylor Street - Meridian, ID  
**INDUSTRIAL SPACE FOR LEASE**



### Property Information:

**Submarket:** Meridian  
**Available:** Immediately  
**Bldg Type:** Metal  
**Bldg Size:** 34,736 SF  
**Divisible:** 8,016 SF  
**Clear Height:** 18' - 20'  
**Dock Doors:** 2  
**Grade Level:** 1  
**Power:** 3 Phase  
**Sprinkler:** Yes  
**Zoning:** I-L  
**Parking:** Ample  
**Lease Type:** NNN  
**NNN Costs:** \$0.11

### Listing Comments:

Great location between Franklin and the Meridian Road Interchange and the new Ten Mile Interchange.

Rail spur on property.

New office build-out.

Entire property is fenced.

### Available Space:

SUITE:	RSF:	RATE/SF:	RENT/Mo:
102	Office 300 SF		
	Whse 7,716 SF		
	<b>Total 8,016 SF</b>	<b>\$0.42</b>	<b>\$3,366.72</b>



### Contact:

**Dan Minnaert, SIOR, CCIM**

Ph: 208.947.0845

Fx: 208.947.0869

dan@tokcommercial.com

www.tokcommercial.com

**Devin Pierce**

Ph: 208.947.0850

Fx: 208.947.0869

devin@tokcommercial.com

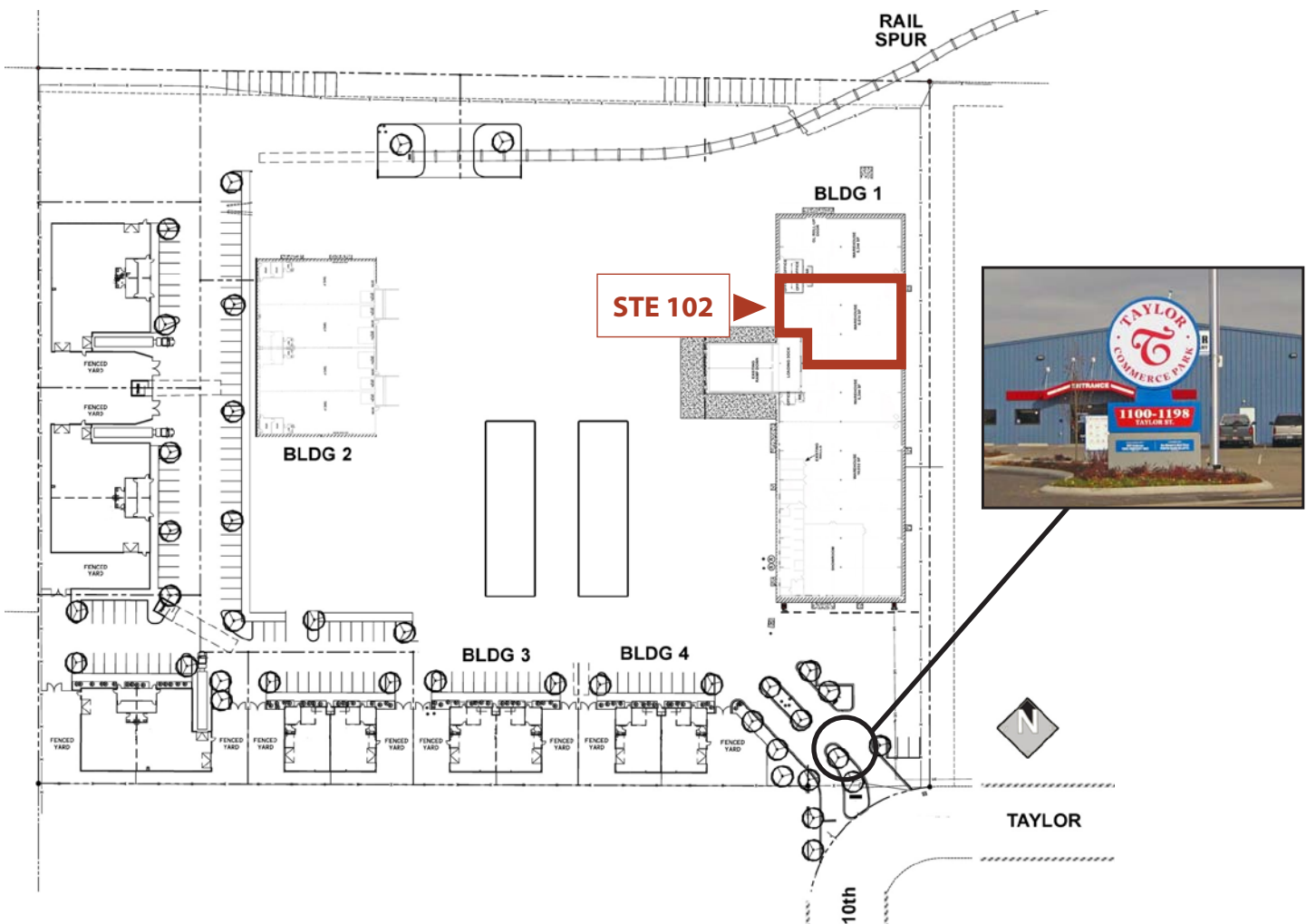
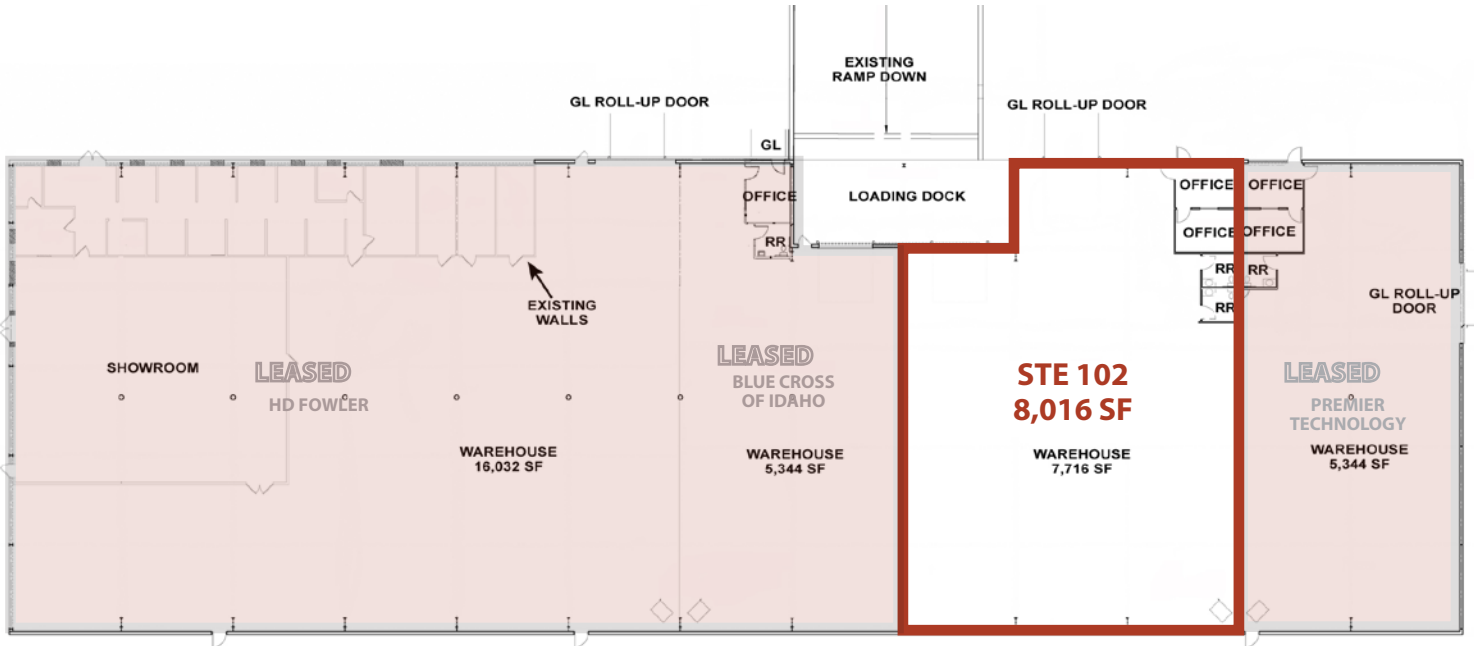
www.tokcommercial.com



# Taylor Commerce Park - Bldg 1

1100 Taylor Street - Meridian, ID

**INDUSTRIAL SPACE FOR LEASE**



This information was obtained from sources believed reliable but cannot be guaranteed. Any opinions or estimates are used for example only.

# Taylor Commerce Park - Bldg 1

1100 Taylor Street - Meridian, ID

**INDUSTRIAL SPACE FOR LEASE**



This information was obtained from sources believed reliable but cannot be guaranteed. Any opinions or estimates are used for example only.