

# Stonewycke Building

291 E Shore Drive ~ Eagle, ID  
**OFFICE SPACE FOR LEASE**



### Property Information:

**Submarket:** Eagle  
**Available:** Immediately  
**Bldg Type:** Office  
**Quality:** Class A  
**Bldg Size:** 16,000 SF  
**Divisible:** Yes  
**# of Floors:** 2  
**Parking:** 4:1000

### Lease Terms:

**Lease Term:** 5 years  
**Lease Type:** FLSVEJ  
**TI Allowance:** Negotiable

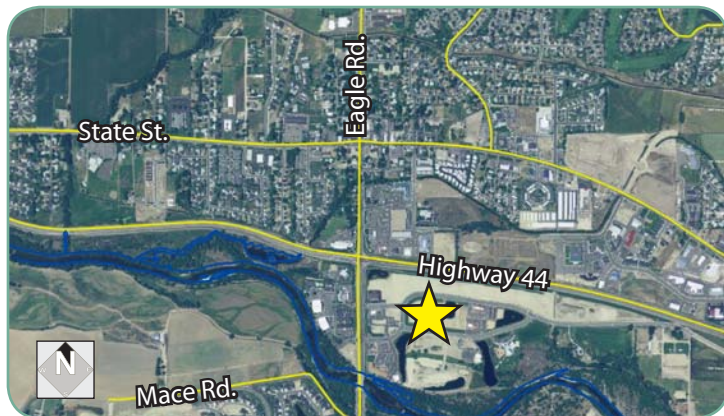
### Listing Comments:

- Located in the prestige Eagle River Business Park.
- One of the best locations in the Treasure Valley.
- Beautifully landscaped with fountains, pond, trees and more.
- Close to Hwy 44 and Eagle Road.
- Built-out and ready for occupancy.
- Near retail, restaurants, lodging and other amenities.

### Available Space:

<b>SPACE:</b>	<b>RSF:</b>	<b>RATE:</b>
Suite 100	7,443 SF	\$16.50/SF

Divisible to 2,500 SF.



### Contact:

**Patrick Shalz, SIOR**  
 Ph: 208.947.0834  
 Fx: 208.947.0869  
 pat@tokcommercial.com  
 www.tokcommercial.com

**Grove T. Hummert**  
 Ph: 208.947.0804  
 Fx: 208.947.0869  
 grove@tokcommercial.com  
 www.tokcommercial.com



# Stonewycke Building

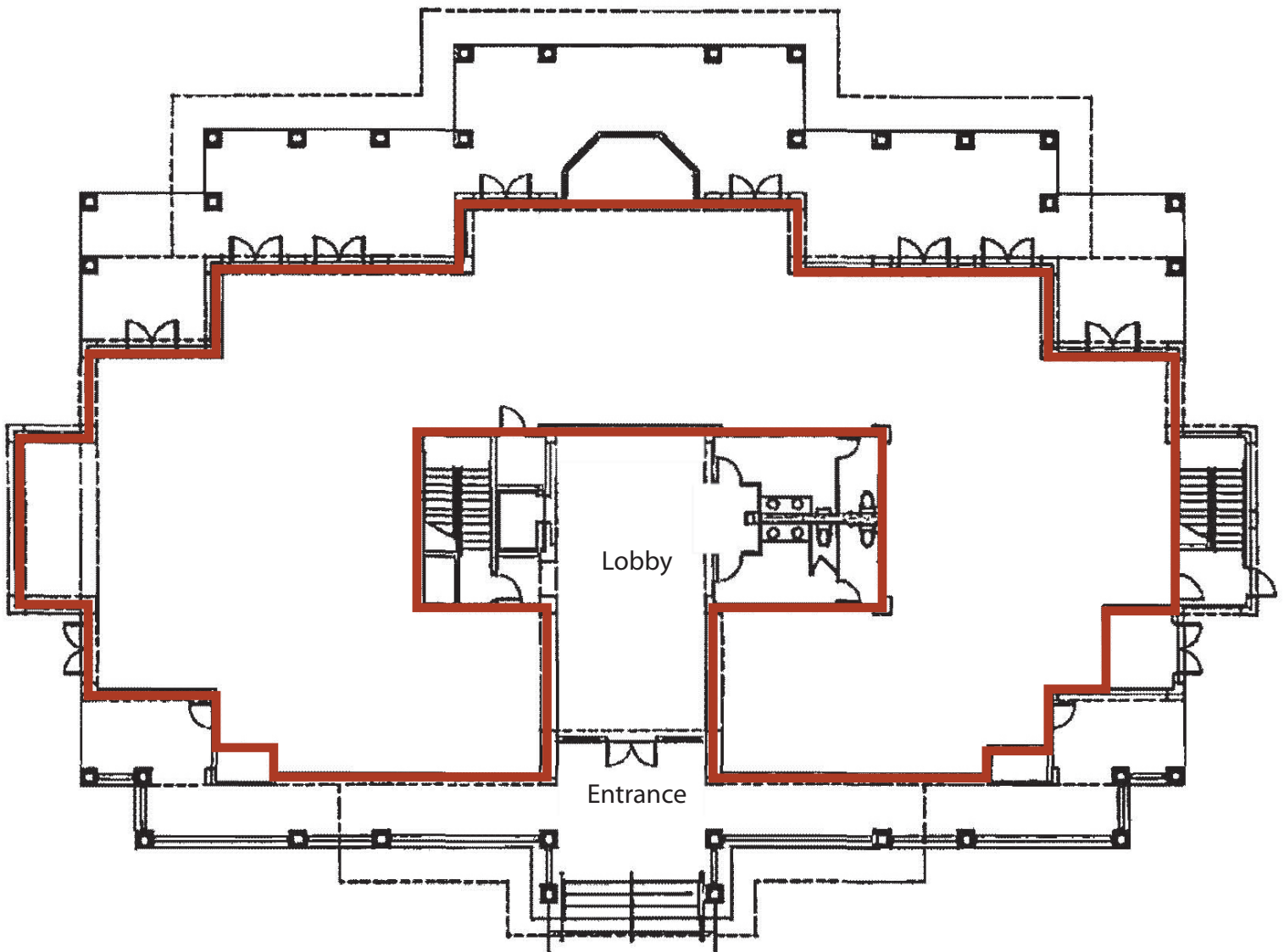
291 E Shore Drive ~ Eagle, ID

OFFICE SPACE FOR LEASE

First Floor

7,443 SF

*Divisible to 2,500 SF*

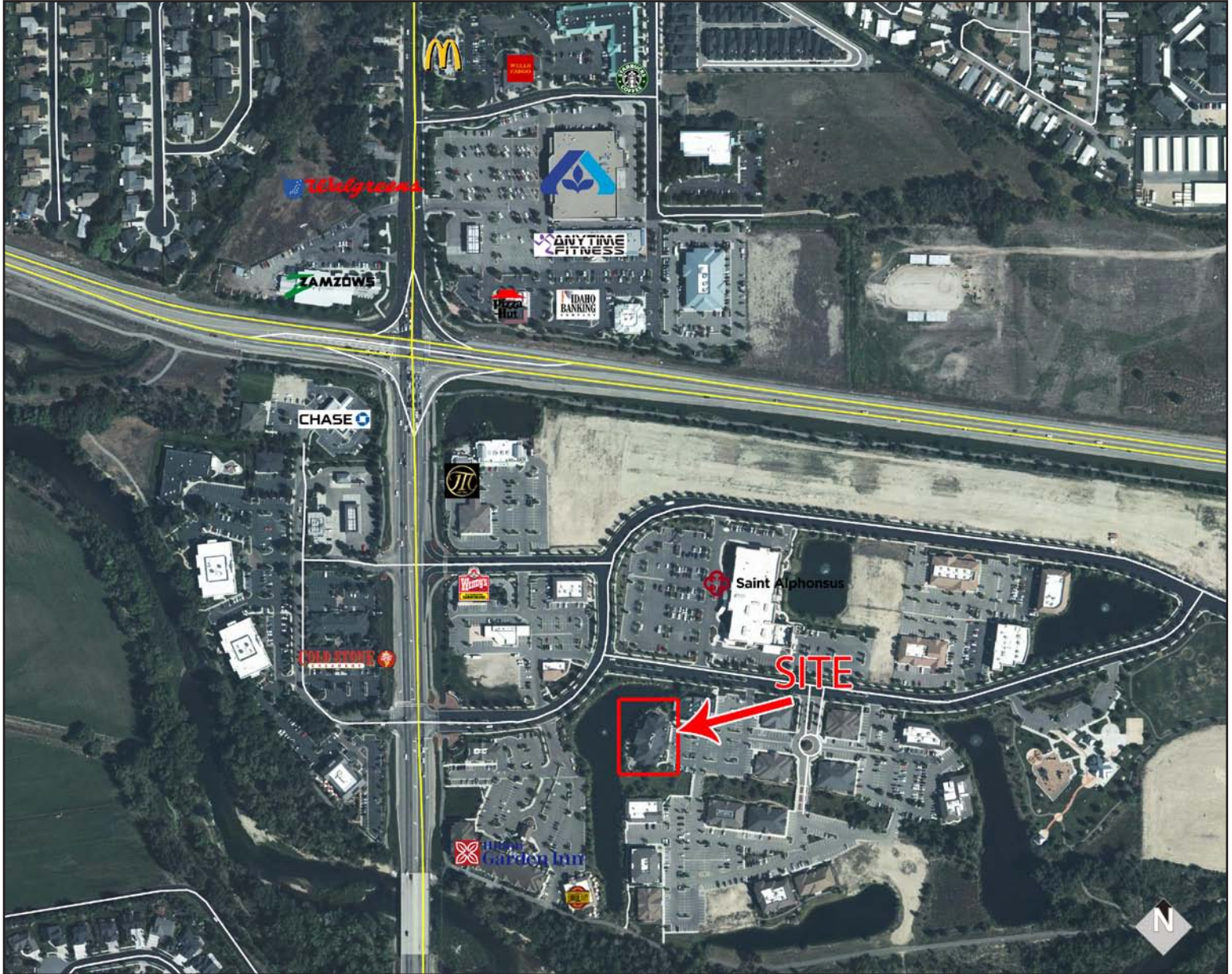


This information was obtained from sources believed reliable but cannot be guaranteed. Any opinions or estimates are used for example only.

# Stonewycke Building

291 E Shore Drive ~ Eagle, ID

OFFICE SPACE FOR LEASE



This information was obtained from sources believed reliable but cannot be guaranteed. Any opinions or estimates are used for example only.