

# Sommersby Subdivision

Ten Mile Road & Pine Avenue -Meridian, ID

8-PLEX LAND FOR SALE



## Listing Comments:

Great visibility on Ten Mile Road and Pine Avenue.

Close to Ten Mile Interchange.

Located in growing area of Meridian.

Eight lots are available. Two lots equal one buildable lot.

## Available:

**Size:** +/- 0.98 Acres  
**Price:** \$75,000 per buildable lot  
**Zoning:** L-O  
**Utilities:** To Site

## Contact:

### **Mark Cleverley**

PH: 208.947.5507

FX: 208.947.0869

markc@tokcommercial.com

www.tokcommercial.com

### **Grove T. Hummert**

PH: 208.947.0804

FX: 208.947.0869

grove@tokcommercial.com

www.tokcommercial.com

### **Patrick Shalz, SIOR**

PH: 208.947.0834

FX: 208.947.0869

pat@tokcommercial.com

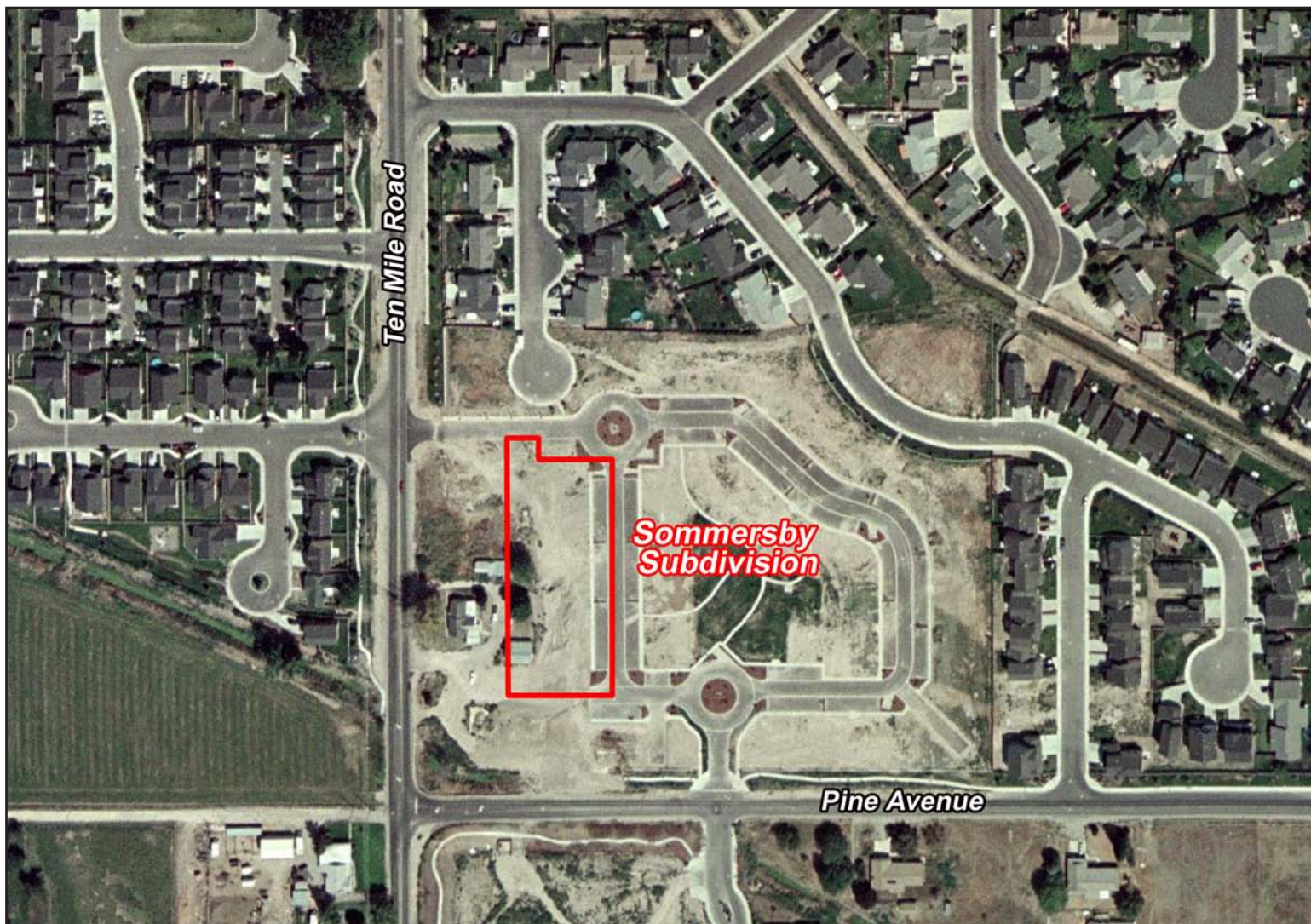
www.tokcommercial.com



# Sommersby Subdivision

Ten Mile Road & Pine Avenue -Meridian, ID

**8-PLEX LAND FOR SALE**

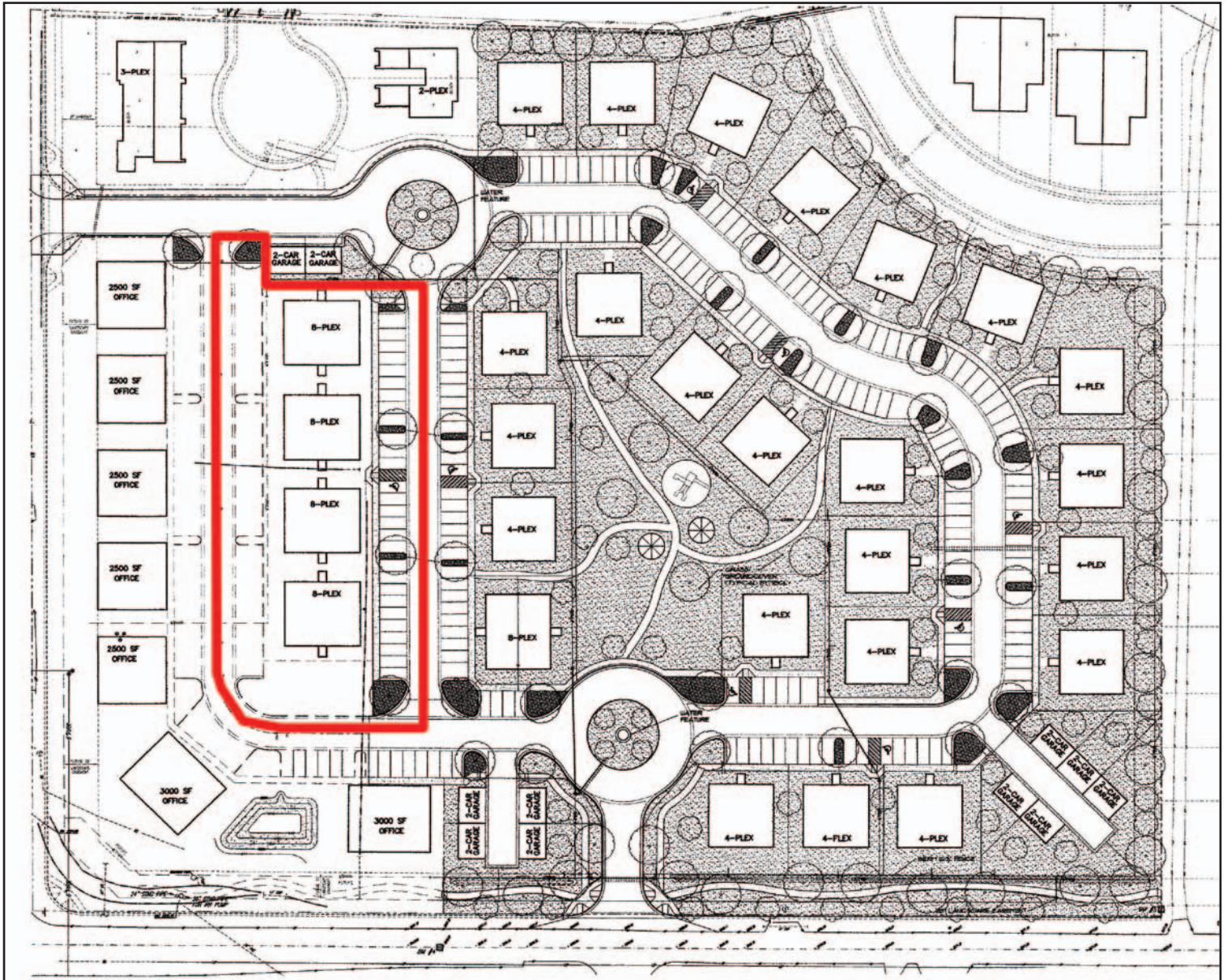


This information was obtained from sources believed reliable but cannot be guaranteed. Any opinions or estimates are used for example only.

# Sommersby Subdivision

Ten Mile Road & Pine Avenue -Meridian, ID

8-PLEX LAND FOR SALE



This information was obtained from sources believed reliable but cannot be guaranteed. Any opinions or estimates are used for example only.