

Solitude Building

6149 N Meeker ~ Boise, ID
OFFICE SPACE FOR LEASE



Property Information:

Submarket: West
Available: Immediately
Bldg Type: Office
Quality: Class A
Bldg Size: 22,784 SF
Divisible: Yes
of Floors: 2
Parking: 4:1,000

Lease Terms:

Lease Term: 3 years minimum
Lease Type: NNN, includes janitorial
Est. NNN's: \$5.00/SF
TI Allowance: Negotiable

Listing Comments:

Located in Boise Research Center.

Close proximity to the West YMCA and other professional services.

Quality construction and attractive design.

Newly renovated common areas.

Tenant improvement allowances available.

Available Space:

SPACE:	RSF:	RATE:
Suite 100*	3,475 SF	\$10.00/SF
Suite 110*	2,133 SF	\$10.00/SF
Suite 250	5,786 SF	\$10.00/SF

*Suites can be combined for 5,608 SF.

Suite 110 available with 60 days notice.
Entire building of 22,784 SF is available.



Contact:

Mike Greene, CCIM

Ph: 208.947.0835
Fx: 208.947.0869
mikeg@tokcommercial.com
www.tokcommercial.com

Scott Raeber, CCIM

Ph: 208.947.0802
Fx: 208.947.0869
scott@tokcommercial.com
www.tokcommercial.com

Peter Oliver, SIOR, CCIM

Ph: 208.947.0816
Fx: 208.947.0869
peter@tokcommercial.com
www.tokcommercial.com

A Development By:



(01/11/12)

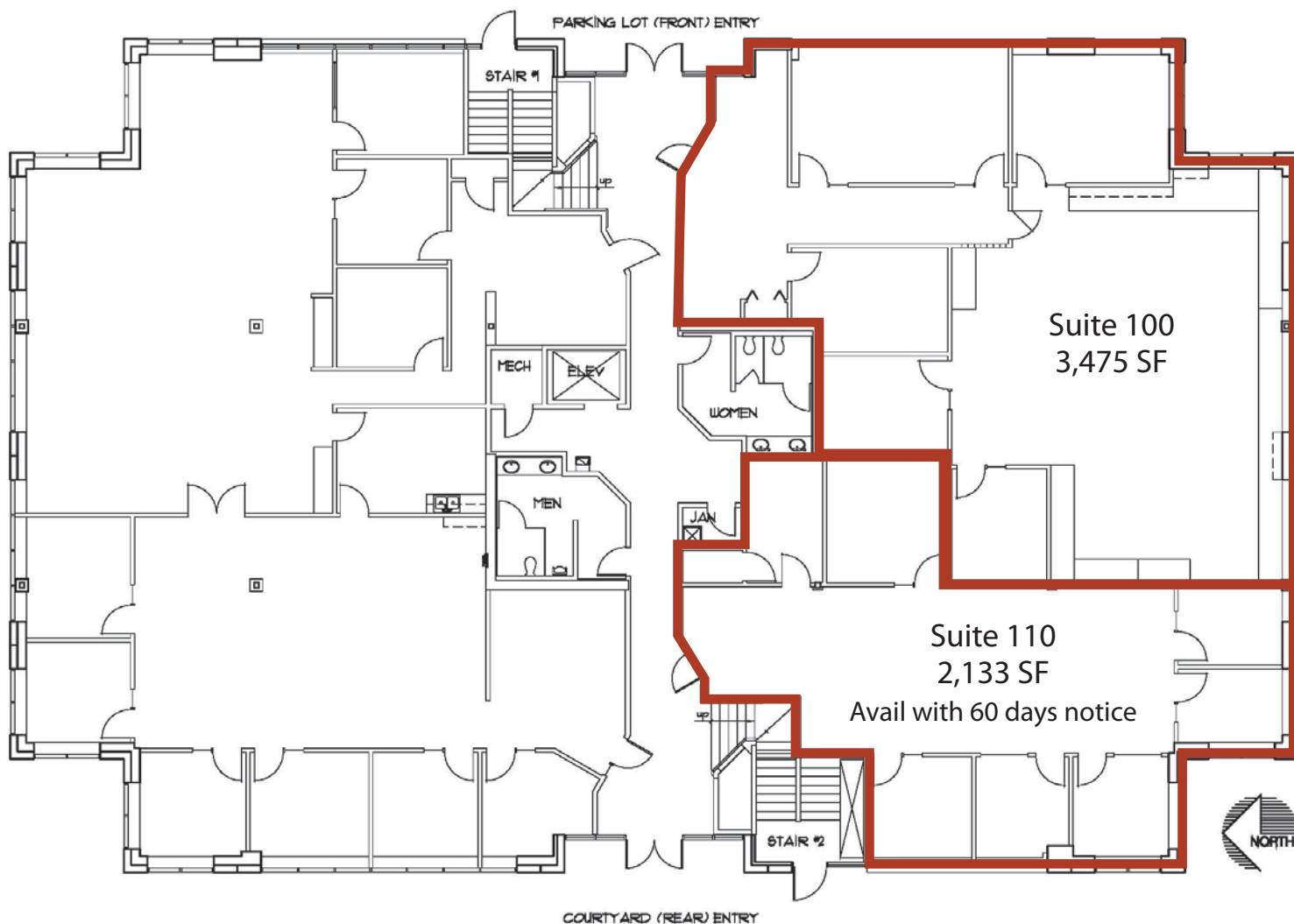
This information was obtained from sources believed reliable but cannot be guaranteed. Any opinions or estimates are used for example only.

Solitude Building

6149 N Meeker ~ Boise, ID

OFFICE SPACE FOR LEASE

First Floor



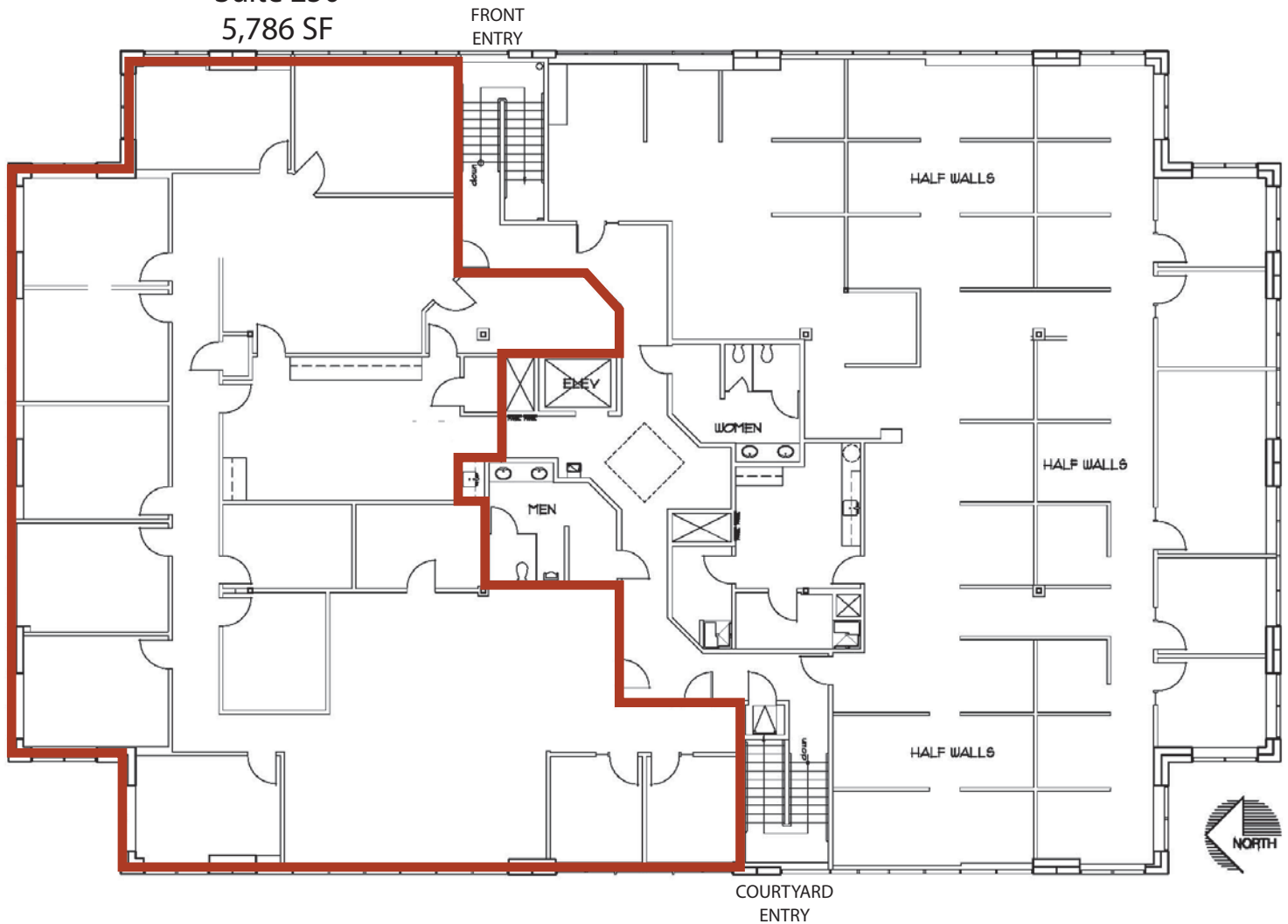
This information was obtained from sources believed reliable but cannot be guaranteed. Any opinions or estimates are used for example only.

Solitude Building

6149 N Meeker ~ Boise, ID
OFFICE SPACE FOR LEASE

Second Floor

Suite 250
5,786 SF



This information was obtained from sources believed reliable but cannot be guaranteed. Any opinions or estimates are used for example only.

Solitude Building

6149 N Meeker ~ Boise, ID
OFFICE SPACE FOR LEASE

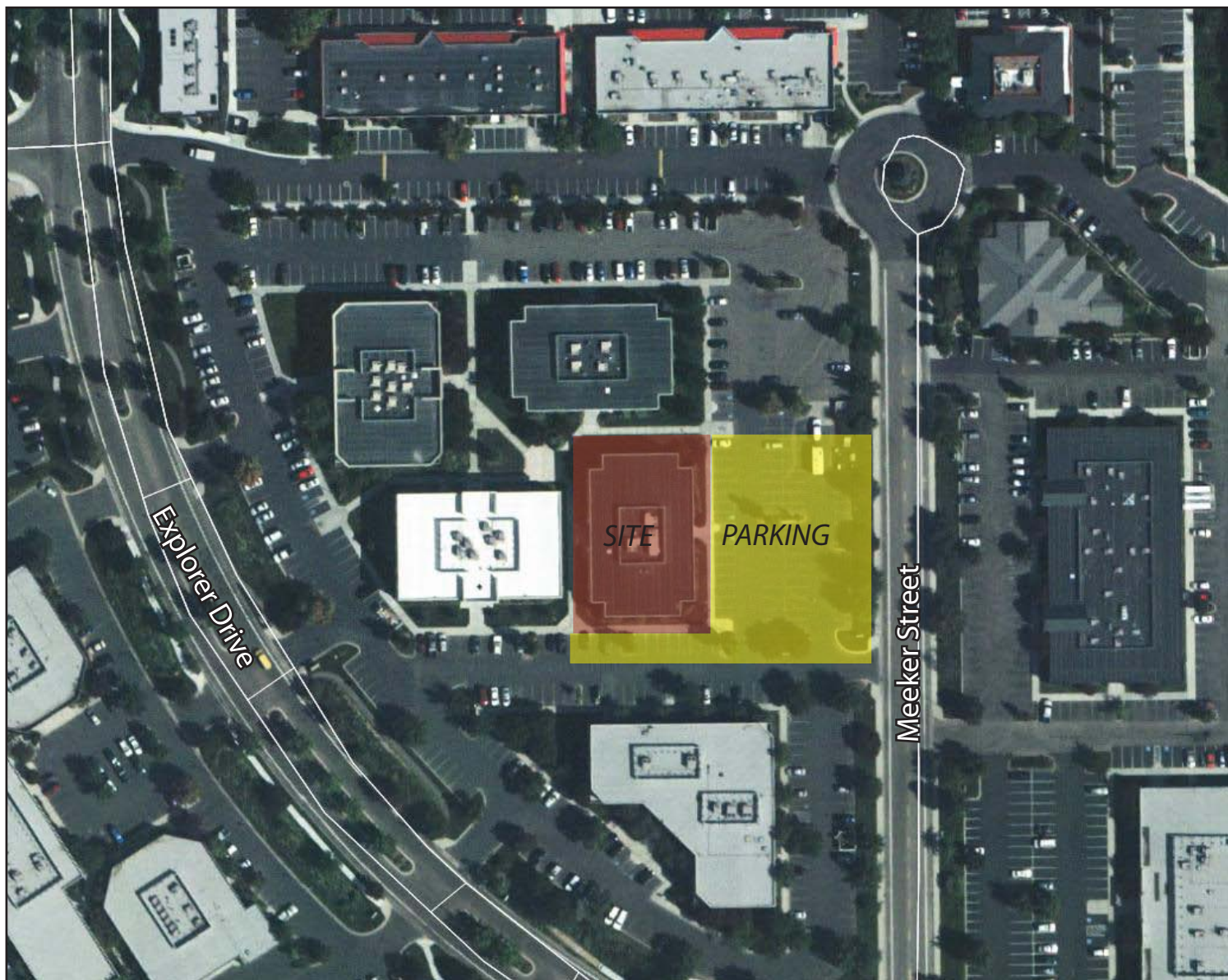


This information was obtained from sources believed reliable but cannot be guaranteed. Any opinions or estimates are used for example only.

Solitude Building

6149 N Meeker ~ Boise, ID

OFFICE SPACE FOR LEASE



This information was obtained from sources believed reliable but cannot be guaranteed. Any opinions or estimates are used for example only.