

Silverton Plaza

290 Bobwhite Court - Boise, ID
OFFICE SPACE FOR LEASE



Property Information:

Submarket: Southeast
Available: Immediately
Bldg Type: Office
Quality: Class A
Bldg Size: 17,137 SF
of Floors: 3
Parking: 3.5:1000

Lease Terms:

Lease Term: 3-5 years
Lease Type: Full Service
TI Allowance: Negotiable

Listing Comments:

- Near restaurants, banks and shopping.
- Close to Downtown Boise.
- Ample parking.
- Great Parkcenter location.

Available Space:

SPACE:	RSF:	RATE:
Suite 220	1,335 SF	\$14.00/SF
Suite 240	2,000 SF	\$14.00/SF
Suite 380	953 SF	\$14.00/SF



Contact:

Al Marino, SIOR
 Ph: 208.947.0811
 Fx: 208.947.0869
 al@tokcommercial.com
 www.tokcommercial.com



Chris Pearson, SIOR
 Ph: 208.947.0859
 Fx: 208.947.0869
 chris@tokcommercial.com
 www.tokcommercial.com



(03/06/12)

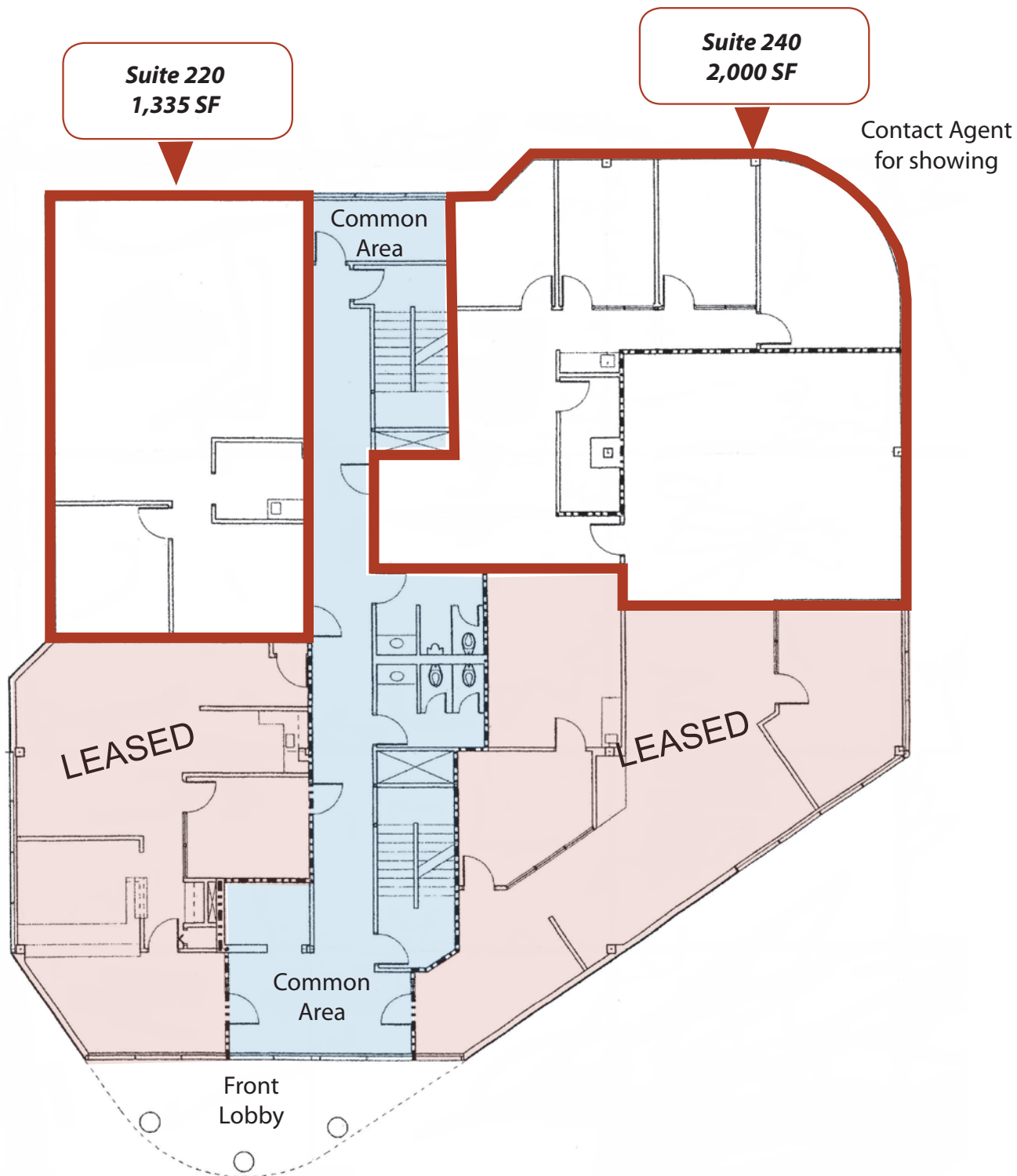
This information was obtained from sources believed reliable but cannot be guaranteed. Any opinions or estimates are used for example only.

Silverton Plaza

290 Bobwhite Court - Boise, ID

OFFICE SPACE FOR LEASE

Second Floor

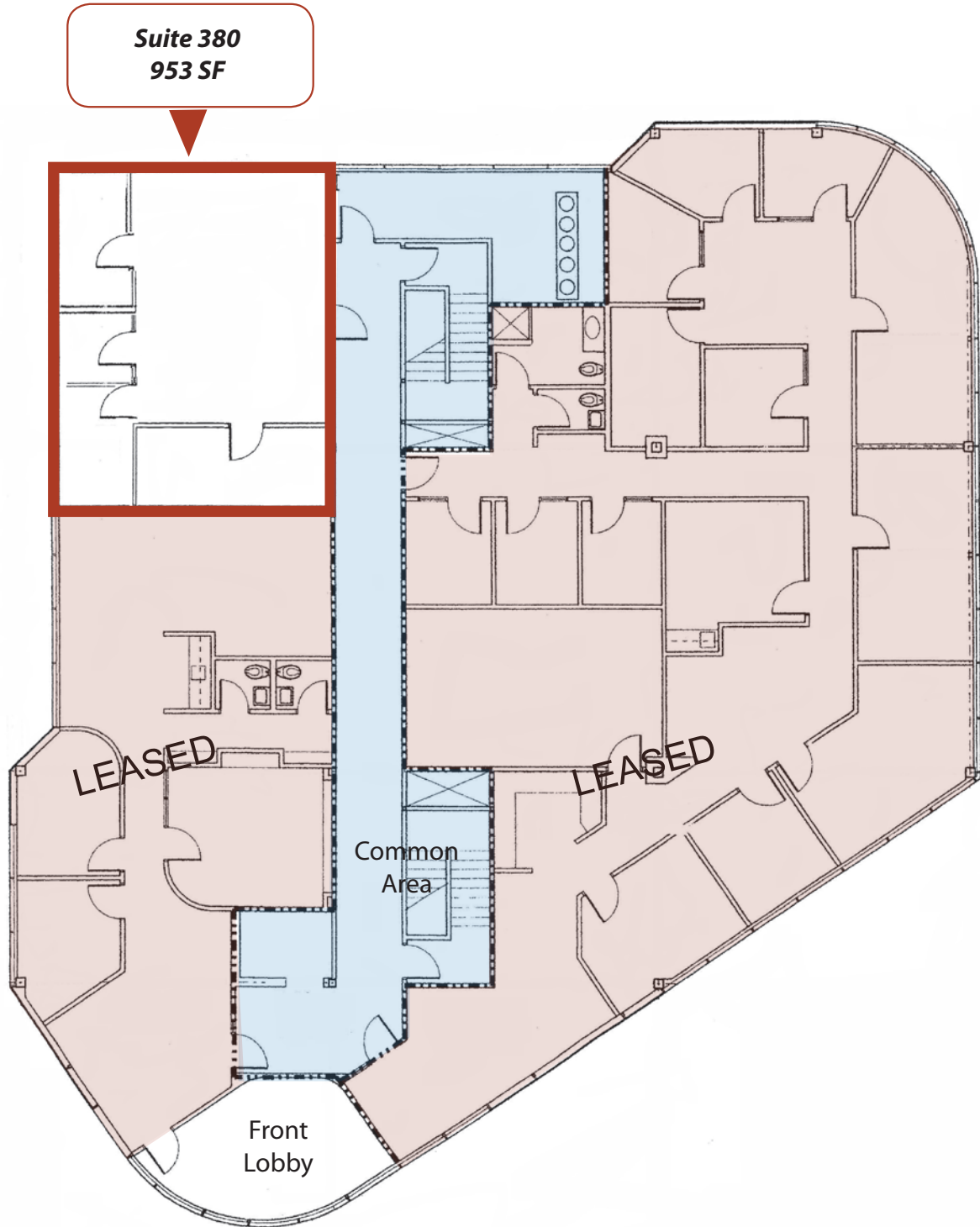


This information was obtained from sources believed reliable but cannot be guaranteed. Any opinions or estimates are used for example only.

Silverton Plaza

290 Bobwhite Court - Boise, ID
OFFICE SPACE FOR LEASE

Third Floor



This information was obtained from sources believed reliable but cannot be guaranteed. Any opinions or estimates are used for example only.