

Sierra Plaza

2965 E Tarpon Dr - Meridian, ID
OFFICE SPACE FOR LEASE



Property Information:

Submarket: S Meridian
Available: Immediately
Bldg Type: Office
Quality: Class A
Bldg Size: 24,000 SF
Divisible: Yes
of Floors: 1
Parking: 5.2/1000

Lease Terms:

Lease Term: 3-5 yrs
Lease Type: FLSVEJ
TI Allowance: As Is

Listing Comments:

Located in El Dorado Business Campus - Eagle & Overland Roads.

Class A office building located in the valley's premier Business Campus.

Excellent access to I-84.

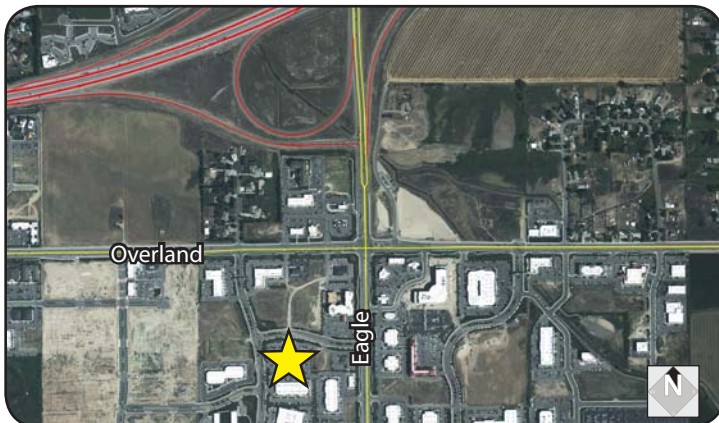
Minutes from several key employee amenities within the valley including the Boise Airport, shopping and hotel lodging for clients.

Fiber Optics available and fully wired for data and telecommunications.

Available Space:

SPACE:	RSF:	RATE:
Suite 150*	4,107 SF	\$17.50/SF
Suite 190	9,345 SF	\$17.50/SF

*Available September 1, 2012



Contact:

Grove T. Hummert
 Ph: 208.947.0804
 Fx: 208.947.0869
 grove@tokcommercial.com
 www.tokcommercial.com

Patrick Shalz, SIOR
 Ph: 208.947.0834
 Fx: 208.947.0869
 pat@tokcommercial.com
 www.tokcommercial.com



Sierra Plaza

2965 E Tarpon Dr - Meridian, ID

OFFICE SPACE FOR LEASE

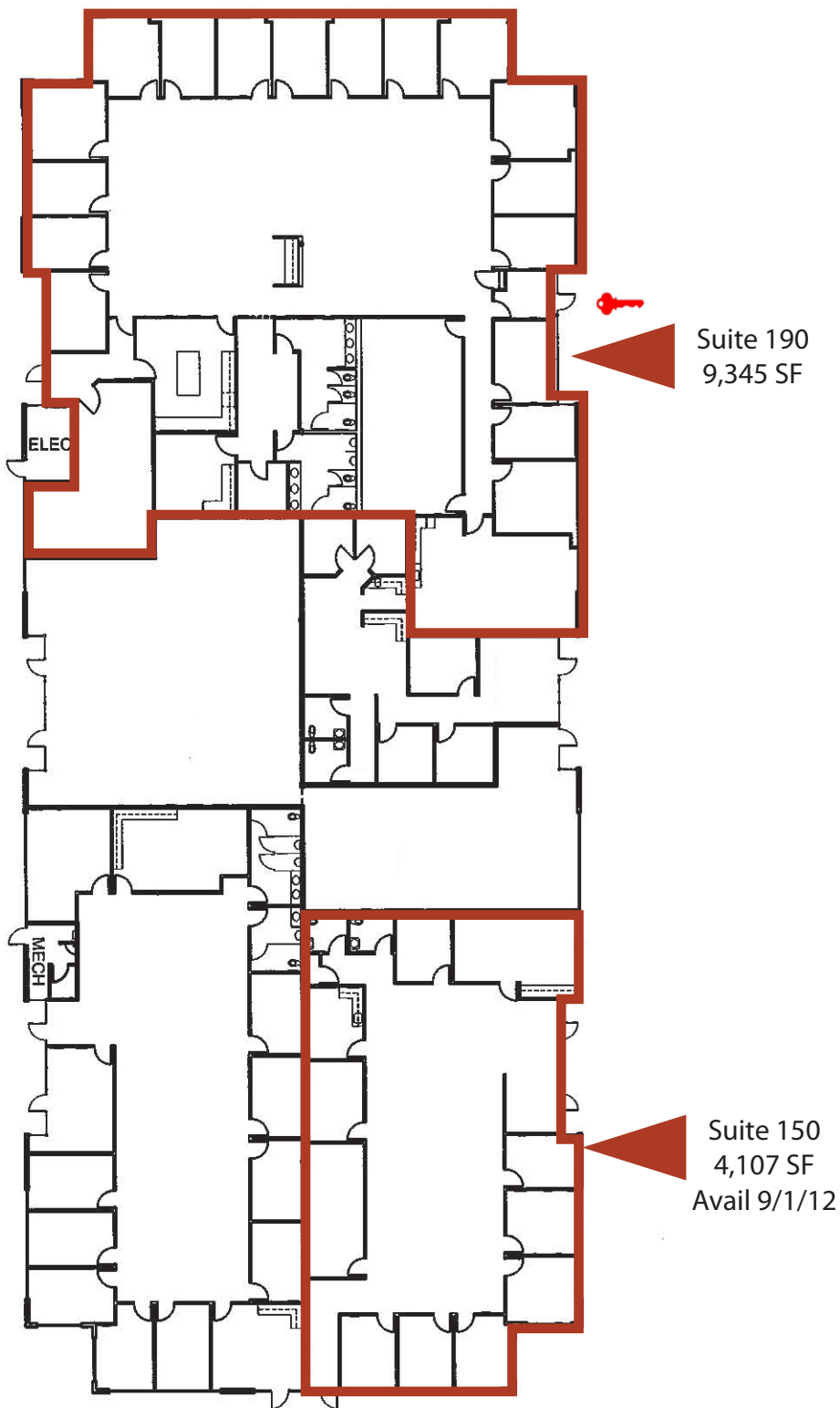


This information was obtained from sources believed reliable but cannot be guaranteed. Any opinions or estimates are used for example only.

Sierra Plaza

2965 E Tarpon Dr - Meridian, ID

OFFICE SPACE FOR LEASE



Lockbox
Location



This information was obtained from sources believed reliable but cannot be guaranteed. Any opinions or estimates are used for example only.