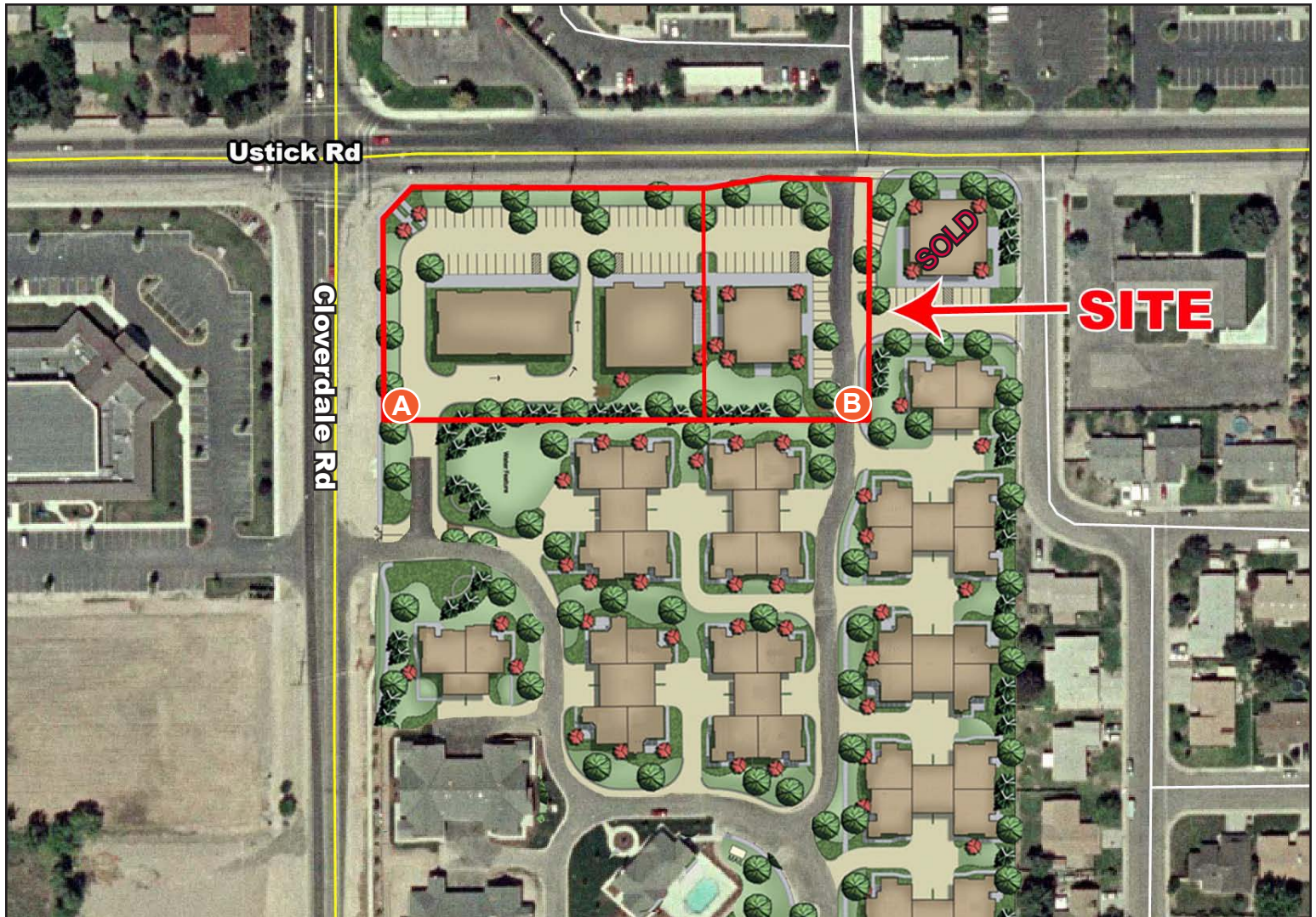


# SEC CLOVERDALE & USTICK

12095 & 12067 W. USTICK, BOISE, IDAHO 83713

## DEVELOPMENT LAND FOR SALE



**THORNTON OLIVER KELLER**  
COMMERCIAL REAL ESTATE

*Experience Results.*

### CONTACT:

Michael T. Keller SIOR, CCIM  
208.947.0844  
mtk@tokre.com



### AVAILABLE:

<b>Size:</b>	Parcel A: 1.496 Acres Parcel B: 0.806 Acres
<b>Price/SF:</b>	\$15.00
<b>Zoning:</b>	C-1D
<b>Utilities:</b>	To Site, ready to build

### COMMENTS:

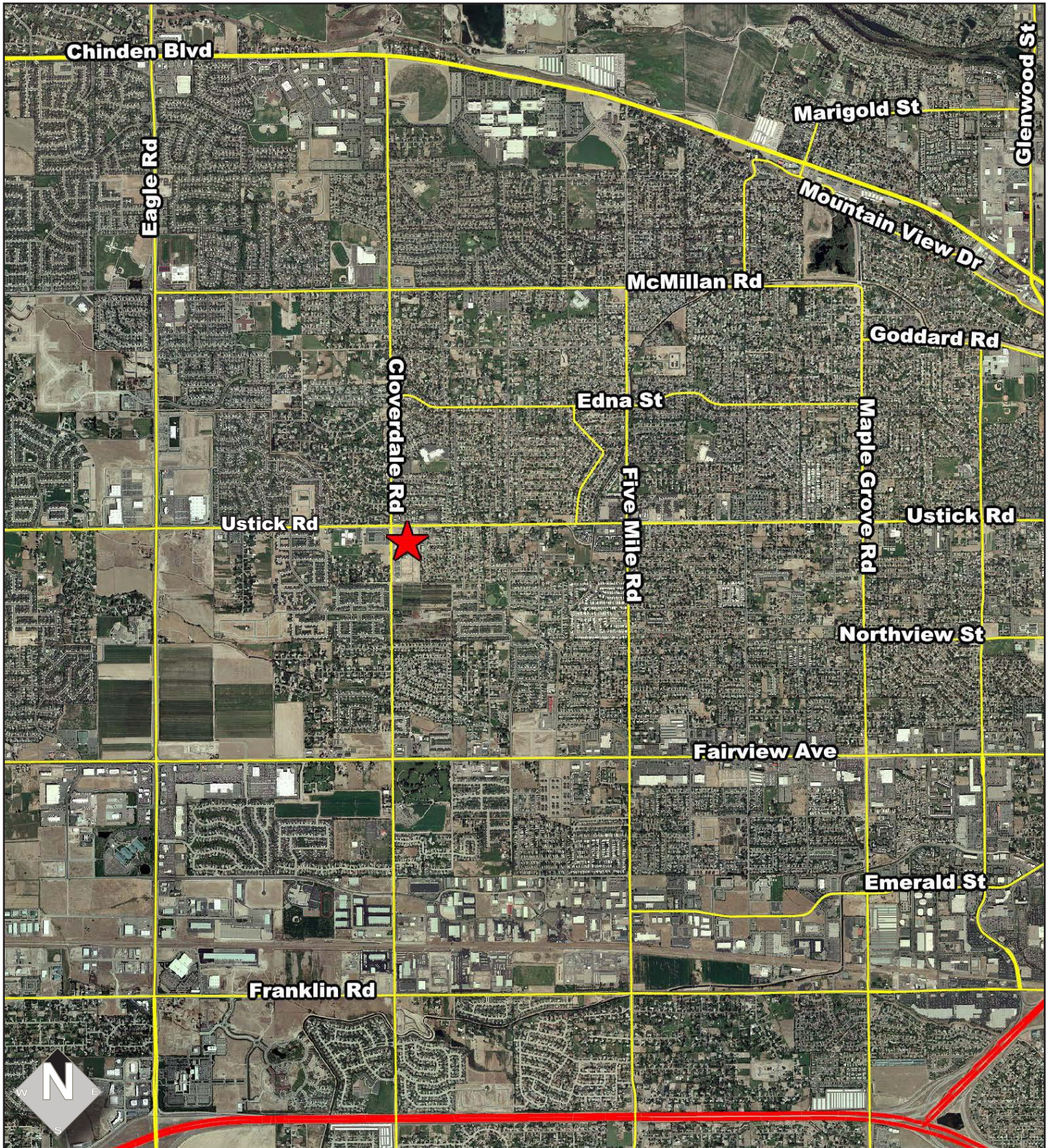
- Underserved commercial market.
- Parcels are ideal for retail & office uses.
- High visibility corner (signalized intersection).

(11/11/10) This information was obtained from sources believed reliable but cannot be guaranteed. Any opinions or estimates are used for example only.

# SEC CLOVERDALE & USTICK

12095 & 12067 W. USTICK, BOISE, IDAHO 83713

DEVELOPMENT LAND FOR SALE



This information was obtained from sources believed reliable but cannot be guaranteed. Any opinions or estimates are used for example only.