

Savannah Building

2375 S Cobalt Point Way - Meridian, ID
OFFICE SPACE FOR LEASE



Property Information:

Submarket: S. Meridian
Available: Immediately
Bldg Type: Office
Quality: Class A
Bldg Size: 9,530 SF
Divisible: No
of Floors: 2
Parking: 32 spaces

Lease Terms:

Lease Term: Minimum 6 months
Lease Type: FLSVEJ

Listing Comments:

- Hard to find small space in Silverstone Business Park.
- Newer construction.
- Close to shopping, hotels, restaurants and services.
- Easy access to I-84 at Eagle Road.
- Free use of the Silverstone amenity center.

Available Space:

SPACE:	RSF:	RATE:
Suite 2*	2,210 SF	\$14.00/SF

*Existing Tenant - call for showing



Contact:

Grove T. Hummert

Ph: 208.947.0804
 Fx: 208.947.0869
 grove@tokcommercial.com
 www.tokcommercial.com

Patrick Shalz, SIOR

Ph: 208.947.0834
 Fx: 208.947.0869
 pat@tokcommercial.com
 www.tokcommercial.com



(12/08/11)

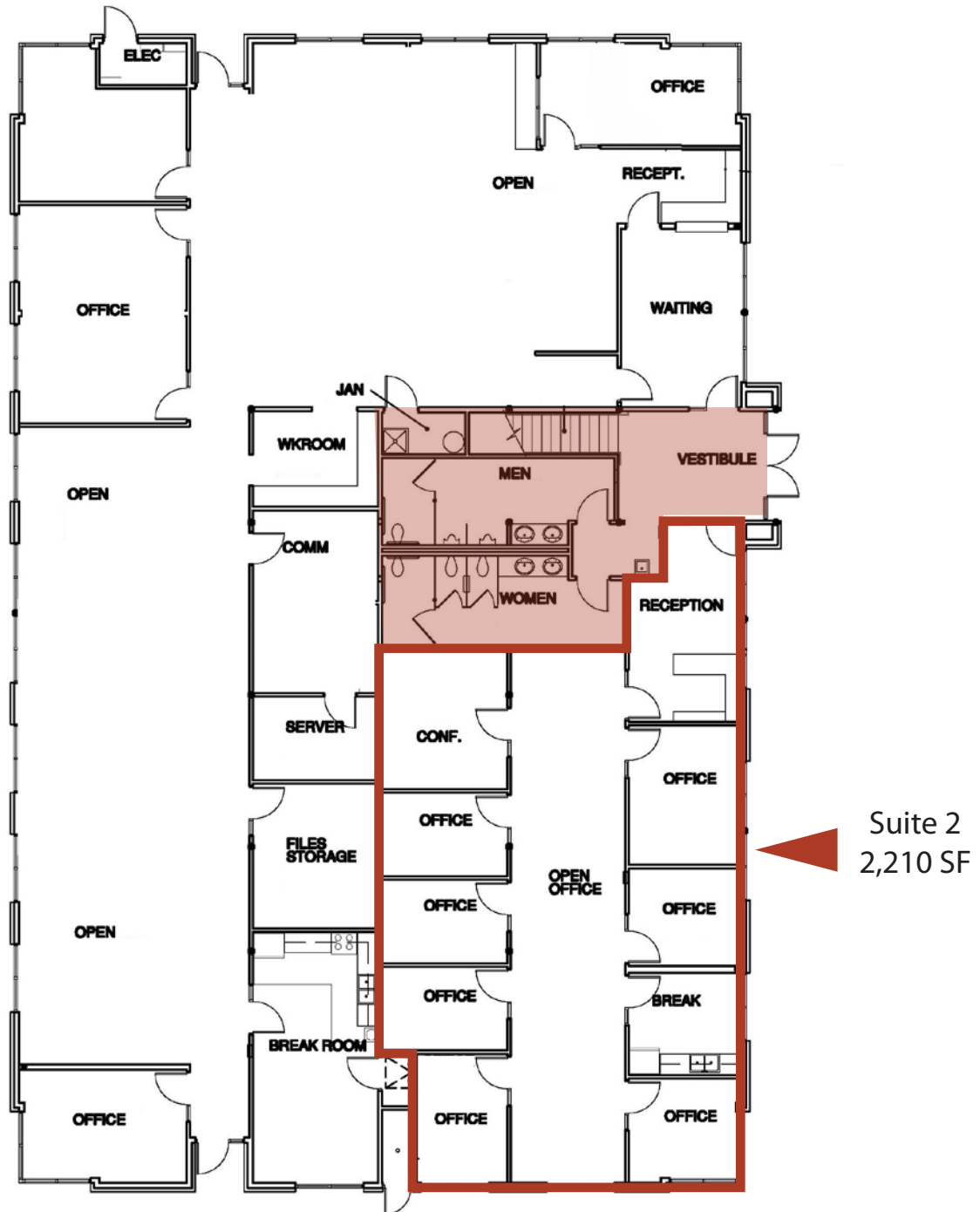
This information was obtained from sources believed reliable but cannot be guaranteed. Any opinions or estimates are used for example only.

Savannah Building

2375 S Cobalt Point Way - Meridian, ID

OFFICE SPACE FOR LEASE

First Floor



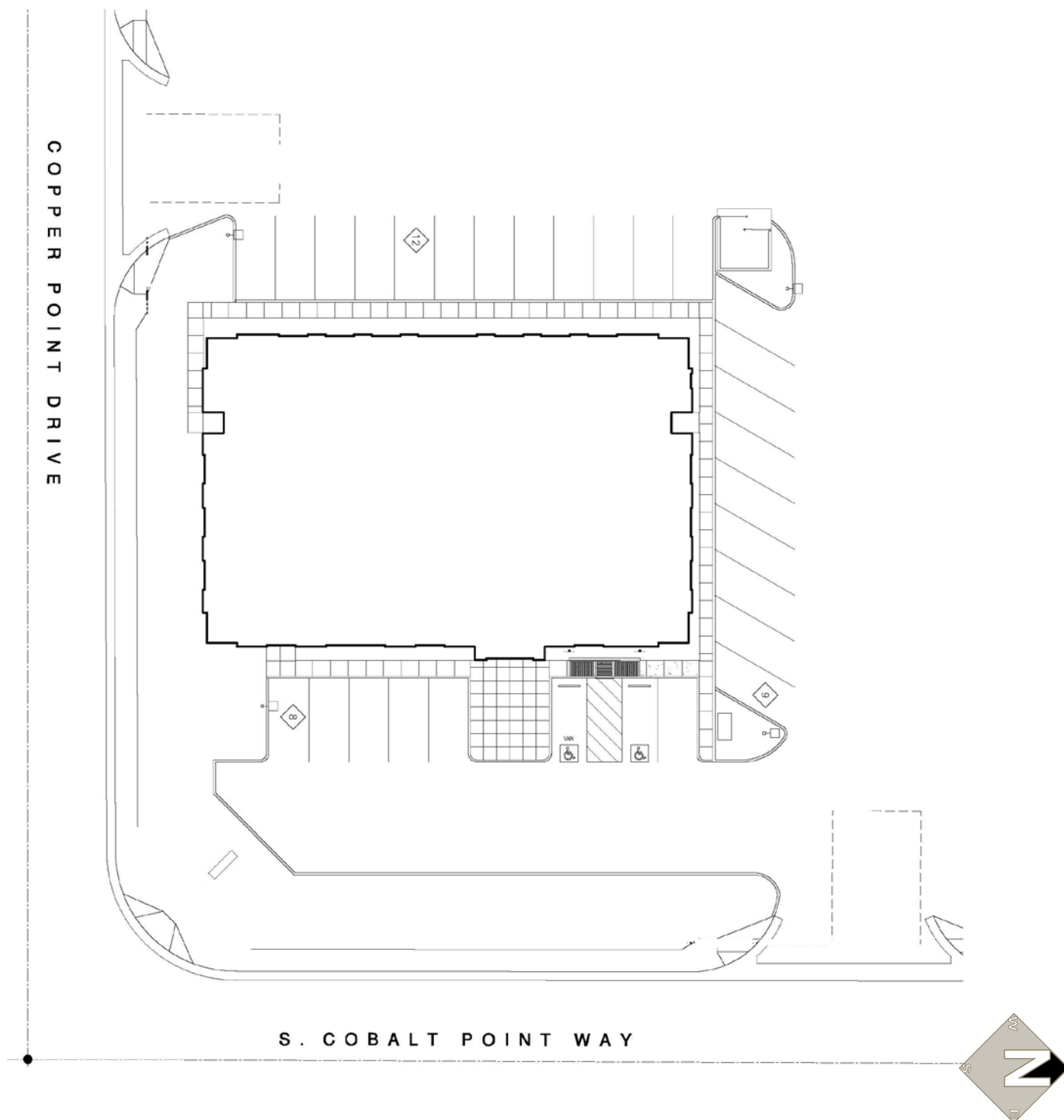
This information was obtained from sources believed reliable but cannot be guaranteed. Any opinions or estimates are used for example only.

Savannah Building

2375 S Cobalt Point Way - Meridian, ID

OFFICE SPACE FOR LEASE

Site Plan



This information was obtained from sources believed reliable but cannot be guaranteed. Any opinions or estimates are used for example only.