

Rivershore South

661 S Rivershore Lane - Eagle, ID
OFFICE SPACE FOR LEASE



Property Information:

Submarket: Eagle
Available: Immediately
Bldg Type: Office
Quality: Class A
Bldg Size: 31,000 SF
Divisible: No
of Floors: Two
Parking: 4.1:1000

Lease Terms:

Lease Term: 3-5 years
Lease Type: Full Service
TI Allowance: Contact Agent

Listing Comments:

Great opportunity for medical offices near St. Alphonsus medical facility.

Beautifully landscaped with great river views, fountains, trees and more.

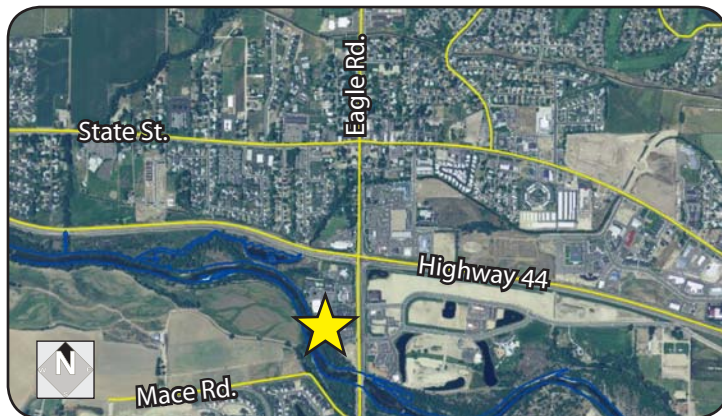
High-speed DSL service available.

Retail shops, restaurants and Boise River Pathway System on site.

Available Space:

SPACE:	RSF:	RATE:
Suite 120*	3,359 SF	Contact Agent
Suite 260	2,757 SF	\$18.25/SF

*Do not disturb Tenant. Contact Agent for showing.



Contact:

Al Marino, SIOR

Ph: 208.947.0811
Fx: 208.947.0869
al@tokcommercial.com
www.tokcommercial.com

Greg Gaddis

Ph: 208.947.0827
Fx: 208.947.0869
greg@tokcommercial.com
www.tokcommercial.com



(09/09/11)

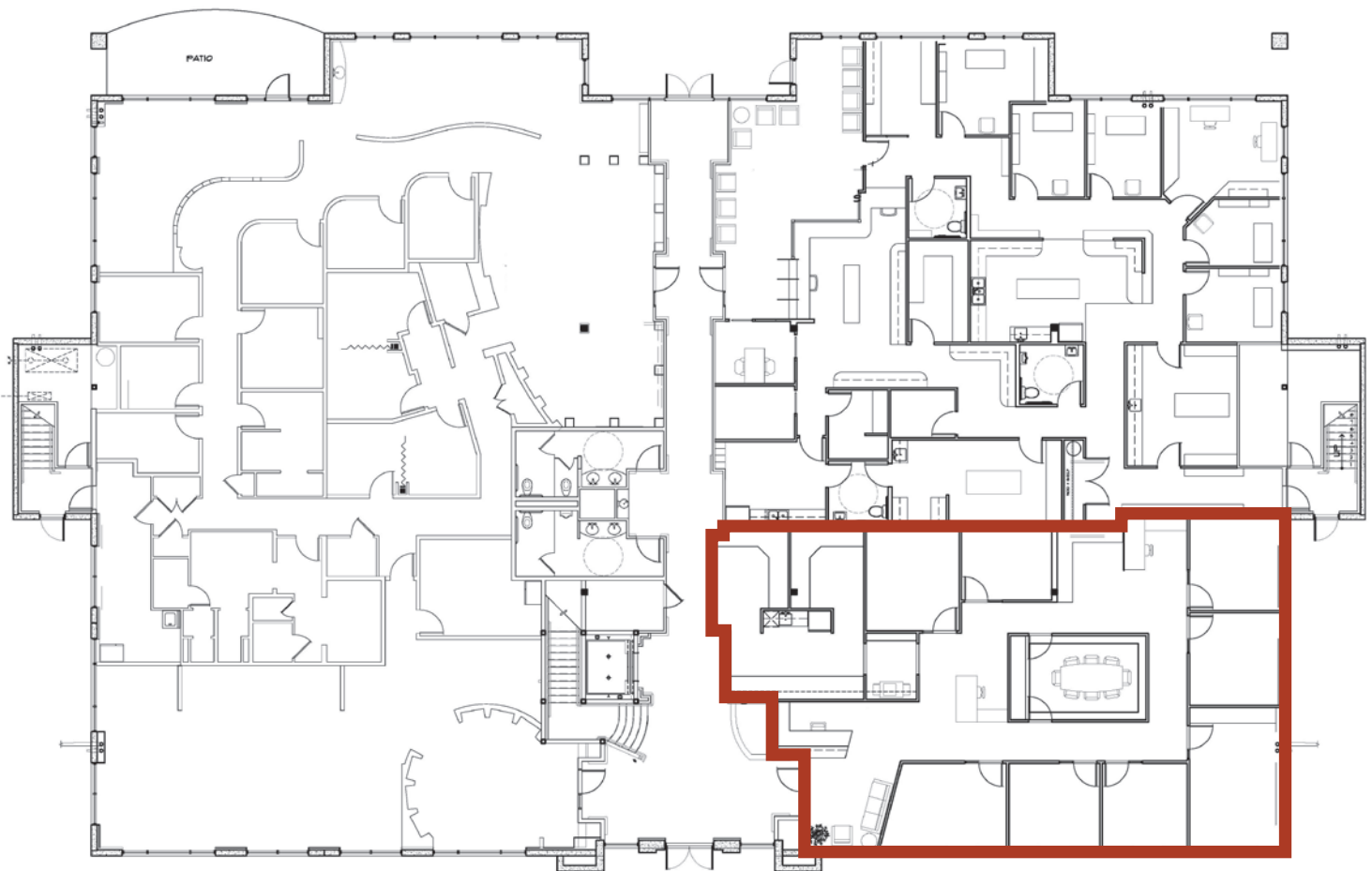
This information was obtained from sources believed reliable but cannot be guaranteed. Any opinions or estimates are used for example only.

Rivershore South

661 S Rivershore Lane - Eagle, ID

OFFICE SPACE FOR LEASE

First Floor



Suite 120
3,359 SF

**Do Not Disturb Tenant.
Contact Agent for showing.**

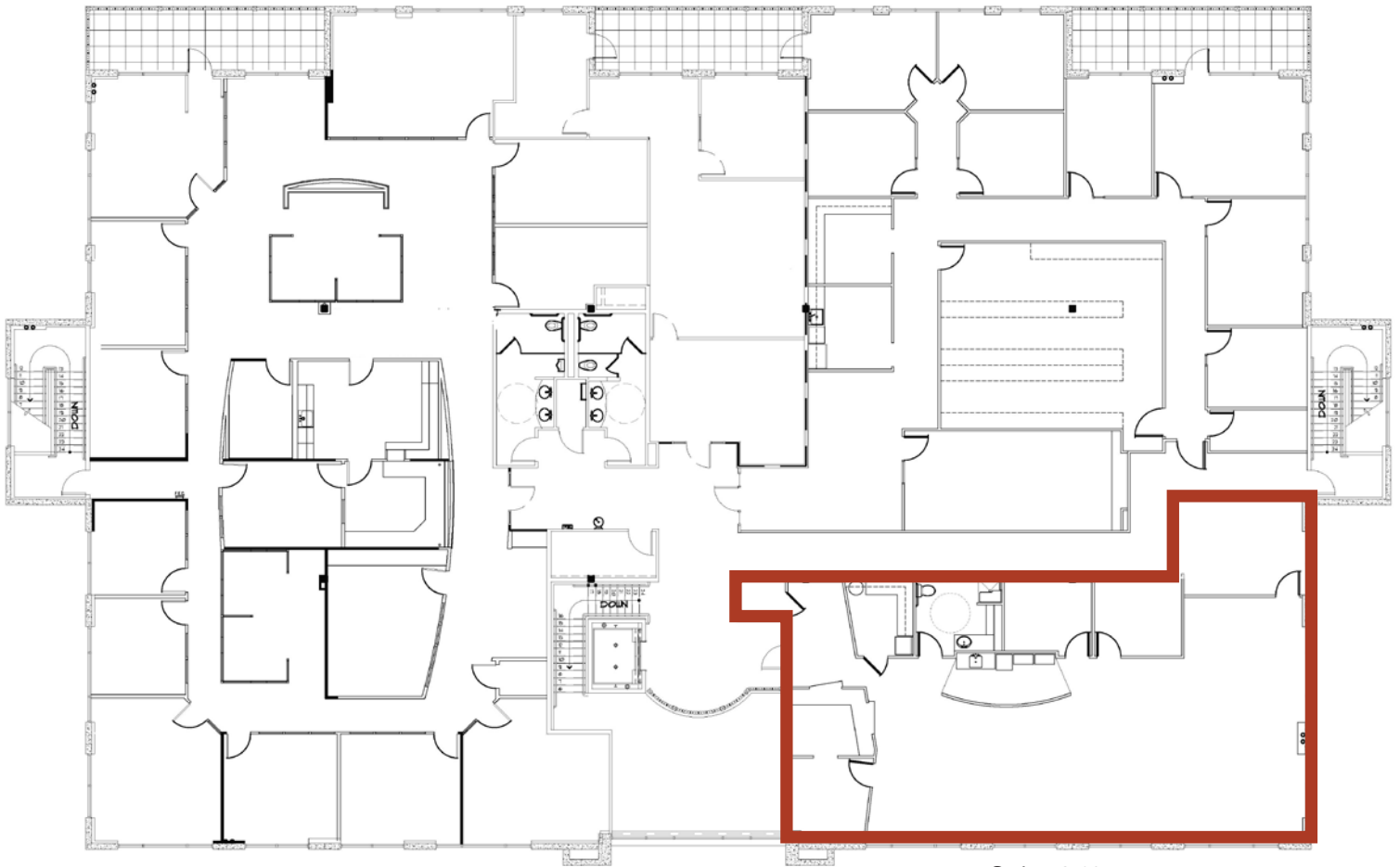
This information was obtained from sources believed reliable but cannot be guaranteed. Any opinions or estimates are used for example only.

Rivershore South

661 S Rivershore Lane - Eagle, ID

OFFICE SPACE FOR LEASE

Second Floor



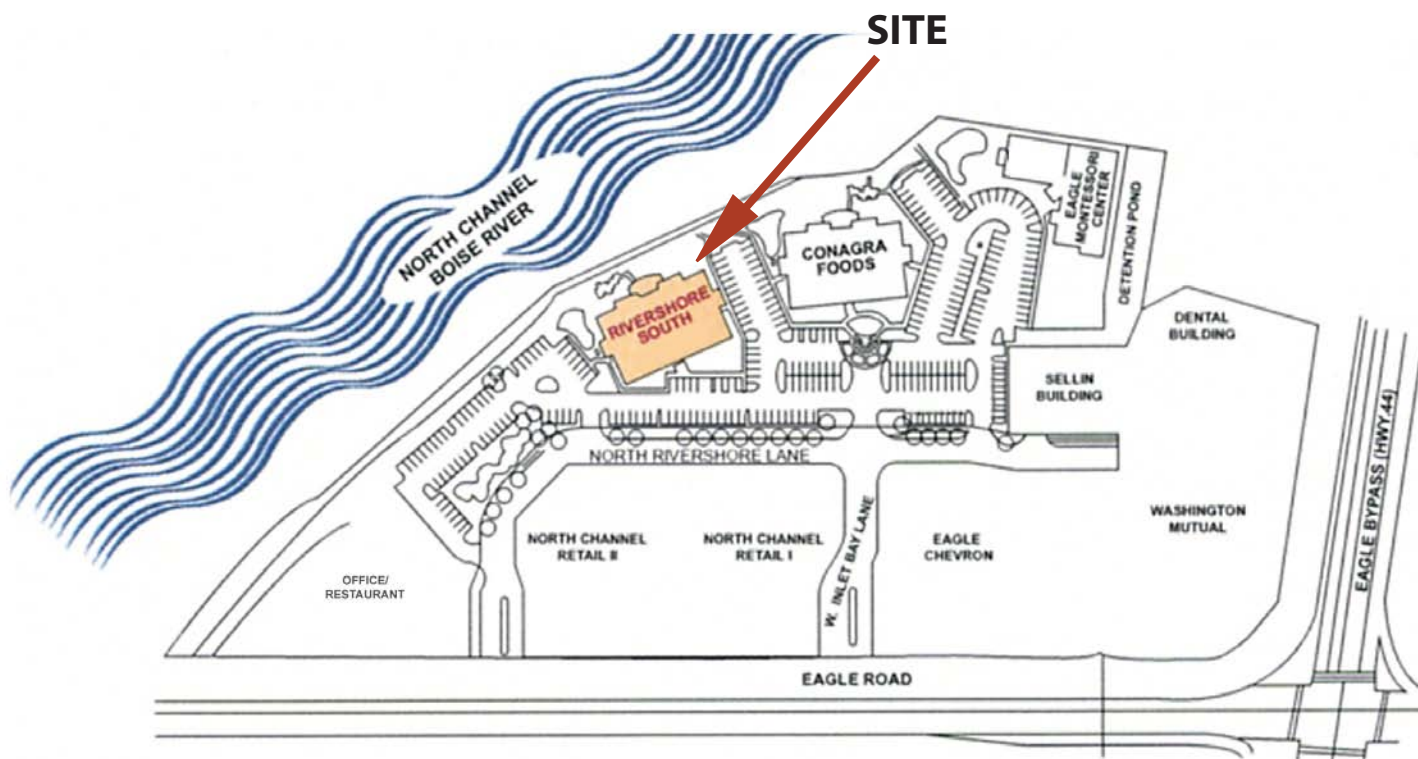
Suite 260
2,757 SF

This information was obtained from sources believed reliable but cannot be guaranteed. Any opinions or estimates are used for example only.

Rivershore South

661 S Rivershore Lane - Eagle, ID

OFFICE SPACE FOR LEASE



This information was obtained from sources believed reliable but cannot be guaranteed. Any opinions or estimates are used for example only.