

River Business Center

1030-1050 River Street- Boise, ID
WAREHOUSE SPACE FOR LEASE



Property Information:

Submarket:	Downtown
Available:	Immediately
Bldg Type:	Industrial
Bldg Size:	43,376 SF
Divisible:	Yes
Clear Height:	16' - 18'
Dock Doors:	3
Grade Level:	No
Power:	3 Phase
Zoning:	C-5DD
Parking:	Ample
Lease Term:	3 - 5 yrs
Lease Type:	NNN
NNN Costs:	\$0.11

Listing Comments:

First rate warehouse in downtown Boise.

Excellent visibility.

Ready to occupy.

Fully sprinklered.

Available Space:

SPACE:	RSF:	RATE/SF:	MONTHLY:
1030	11,742 SF	\$0.45	\$5,284



Contact:

Dan Minnaert, SIOR, CCIM

Ph: 208.947.0845

Fx: 208.947.0869

dan@tokcommercial.com

www.tokcommercial.com

Jerry Van Engen

Ph: 208.947.0840

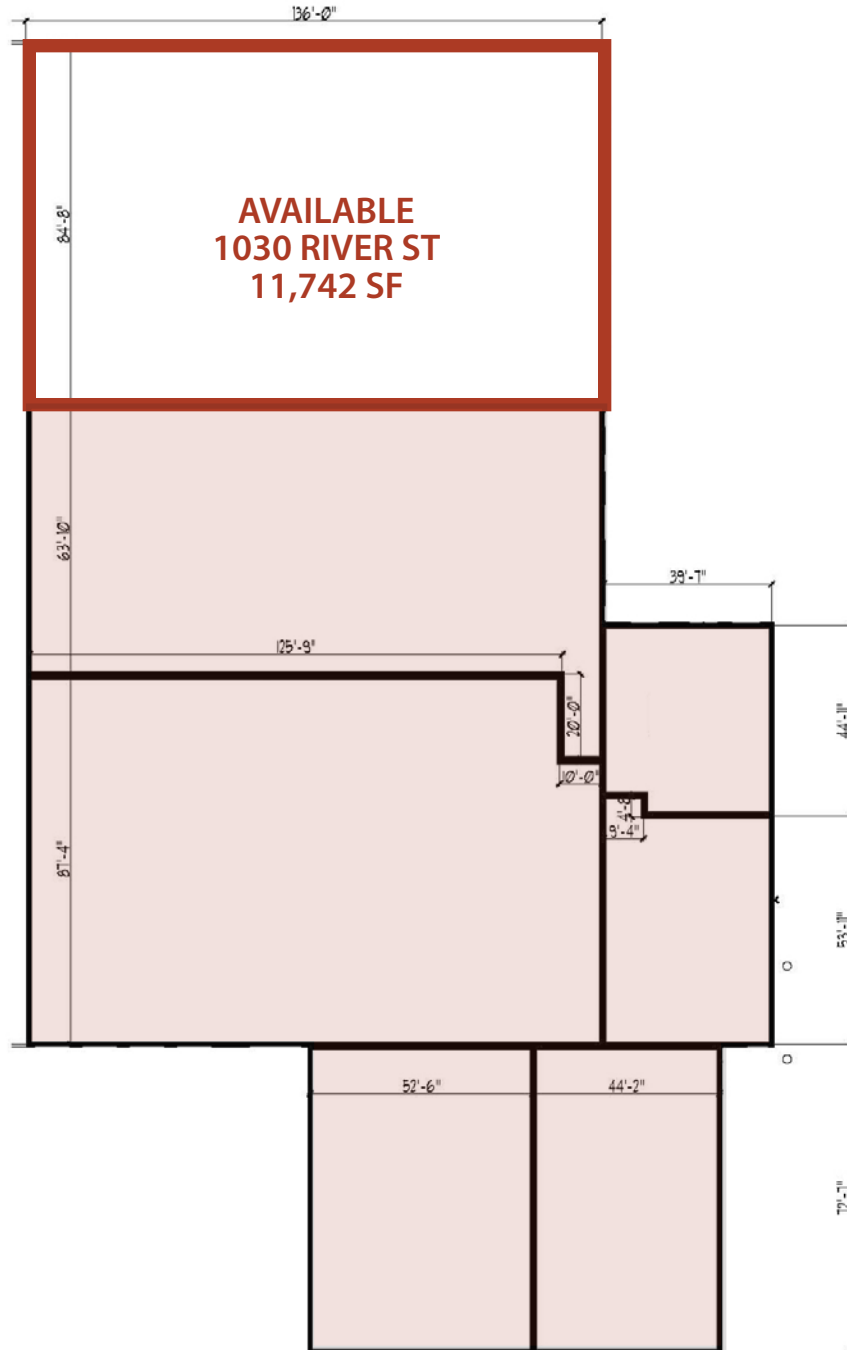
Fx: 208.947.0869

jerry@tokcommercial.com

www.tokcommercial.com



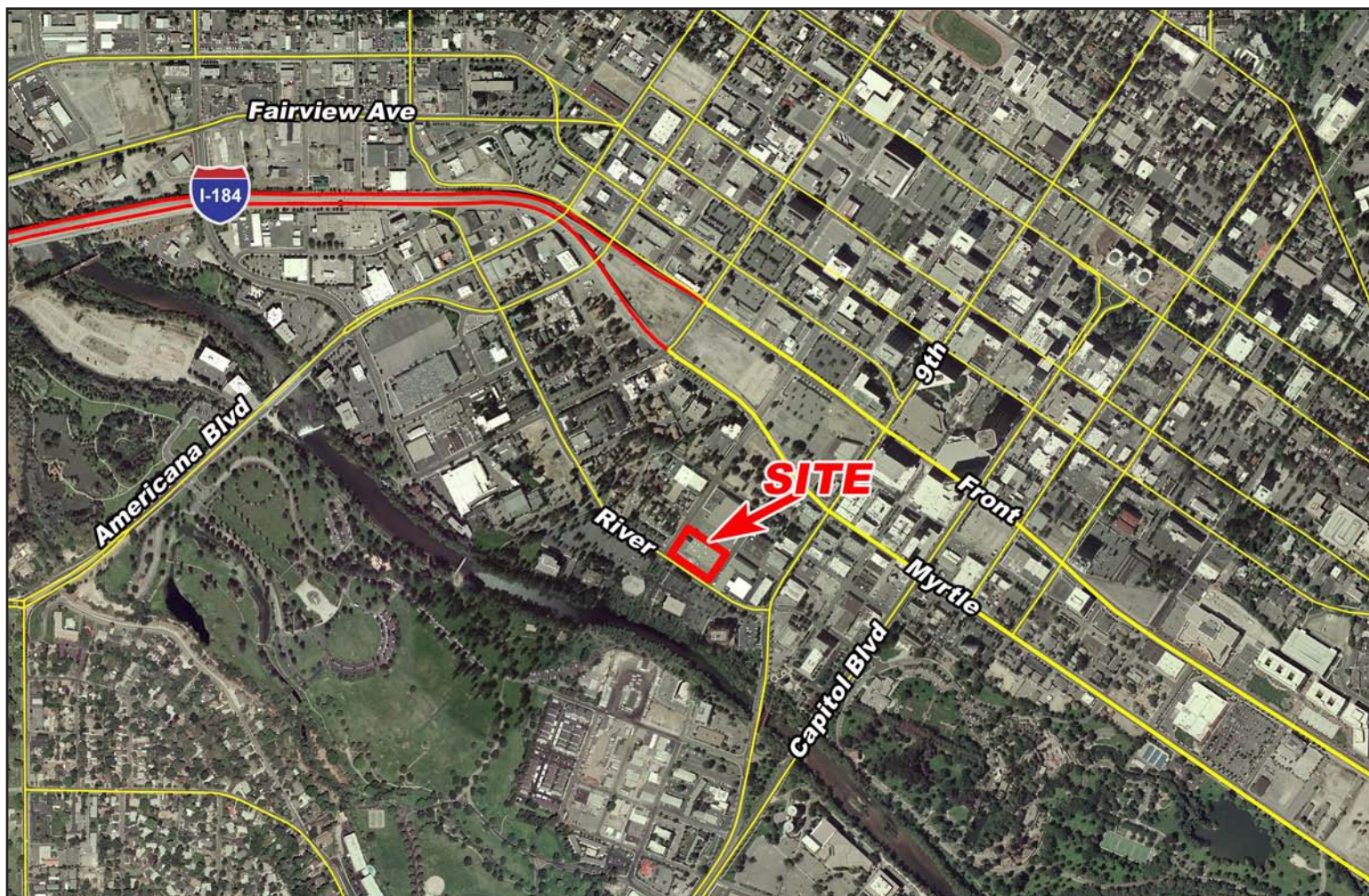
FIRST FLOOR



This information was obtained from sources believed reliable but cannot be guaranteed. Any opinions or estimates are used for example only.

River Business Center

1030-1050 River Street- Boise, ID
WAREHOUSE SPACE FOR LEASE



This information was obtained from sources believed reliable but cannot be guaranteed. Any opinions or estimates are used for example only.