

Redbuilt Building

200 E Mallard - Boise, ID
OFFICE SPACE FOR LEASE



Property Information:

Submarket: Southeast
Available: Immediately
Bldg Type: Office
Quality: Class B
Bldg Size: 25,832 SF
Divisible: Yes
of Floors: 1
Parking: Ample

Lease Terms:

Lease Term: 1 - 5 Yrs
Lease Type: FLSVEJ
TI Allowance: Negotiable

Listing Comments:

- Premier location off Parkcenter Boulevard.
- Convenient access to downtown Boise and I-184 Connector.
- Close to shops, restaurants and other professional services.
- Easy access to Greenbelt.
- Located on Parkcenter pond.

Available Space:

SPACE:	RSF:	RATE:
Suite 110	5,000 SF	\$10.00/SF



Contact:

Patrick Shalz, SIOR
 PH: 208.947.0834
 FX: 208.947.0869
 pat@tokcommercial.com
 www.tokcommercial.com



Grove T. Hummert
 PH: 208.947.0804
 FX: 208.947.0869
 grove@tokcommercial.com
 www.tokcommercial.com

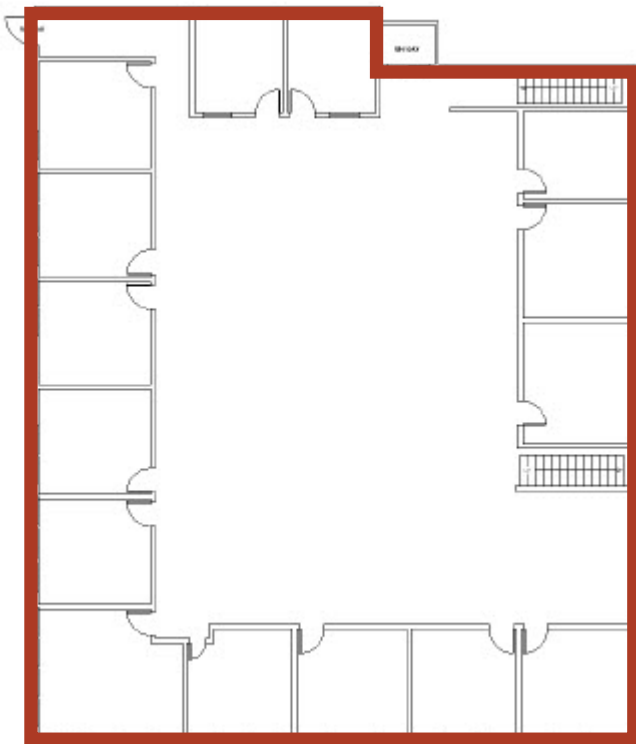
(01/26/12)

This information was obtained from sources believed reliable but cannot be guaranteed. Any opinions or estimates are used for example only.

Redbuilt Building

200 E Mallard - Boise, ID
OFFICE SPACE FOR LEASE

Suite 110
5,000 SF



This information was obtained from sources believed reliable but cannot be guaranteed. Any opinions or estimates are used for example only.