

# Quail Court

1500 S Eagle Flight Way - Boise, ID  
**OFFICE SPACE FOR LEASE**



### Property Information:

**Submarket:** Southwest  
**Available:** Immediately  
**Bldg Type:** Office  
**Quality:** Class A  
**Bldg Size:** 46,650 SF  
**Divisible:** Yes  
**# of Floors:** 2  
**Parking:** 5/1000

### Lease Terms:

**Lease Term:** 3-5 years  
**Lease Type:** FLSVEJ  
**TI Allowance:** Negotiable

### Listing Comments:

Two-story office building located within the Blackeagle Business Center.

Close to a variety of amenities with convenient access to Cole and Overland I-84 interchange.

Excellent parking ratio.

Building signage available.

Professionally, maintained common areas.

Private second floor balconies.

### Available Space:

SPACE:	RSF:	RATE:
Suite 1450		
#100	1,826 SF	\$15.50/SF
#125	1,644 SF	\$15.50/SF
Suite 1456	3,060 SF	\$15.50/SF
Suite 1458	3,112 SF	\$15.50/SF
Suite 1488	2,969 SF	\$15.50/SF
Suite 200	7,136 SF	\$15.50/SF

Contact Agent for showing instructions.



### Contact:

**Greg Gaddis**

Ph: 208.947.0827  
Fx: 208.947.0869  
greg@tokcommercial.com  
www.tokcommercial.com

**Al Marino, SIOR**

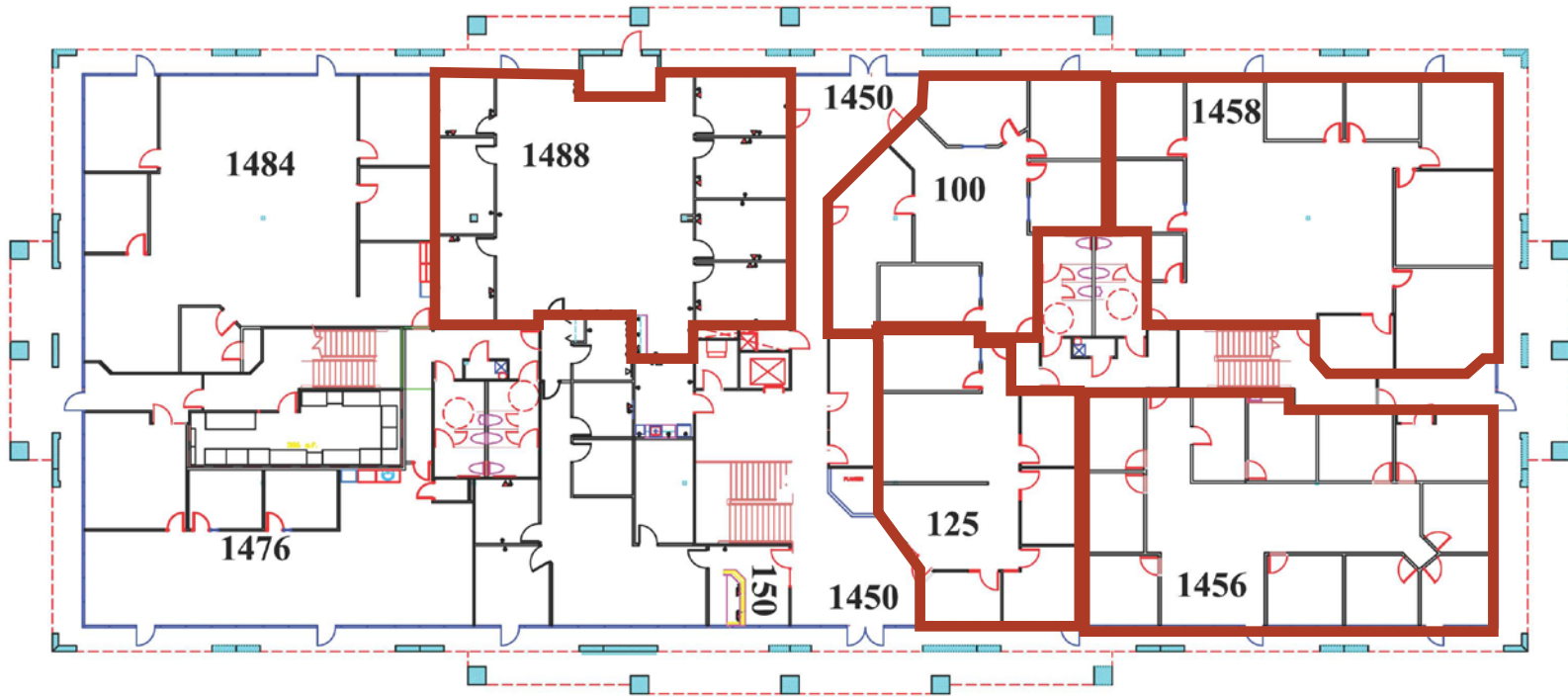
Ph: 208.947.0811  
Fx: 208.947.0869  
al@tokcommercial.com  
www.tokcommercial.com



# Quail Court

1500 S Eagle Flight Way - Boise, ID  
**OFFICE SPACE FOR LEASE**

## First Floor

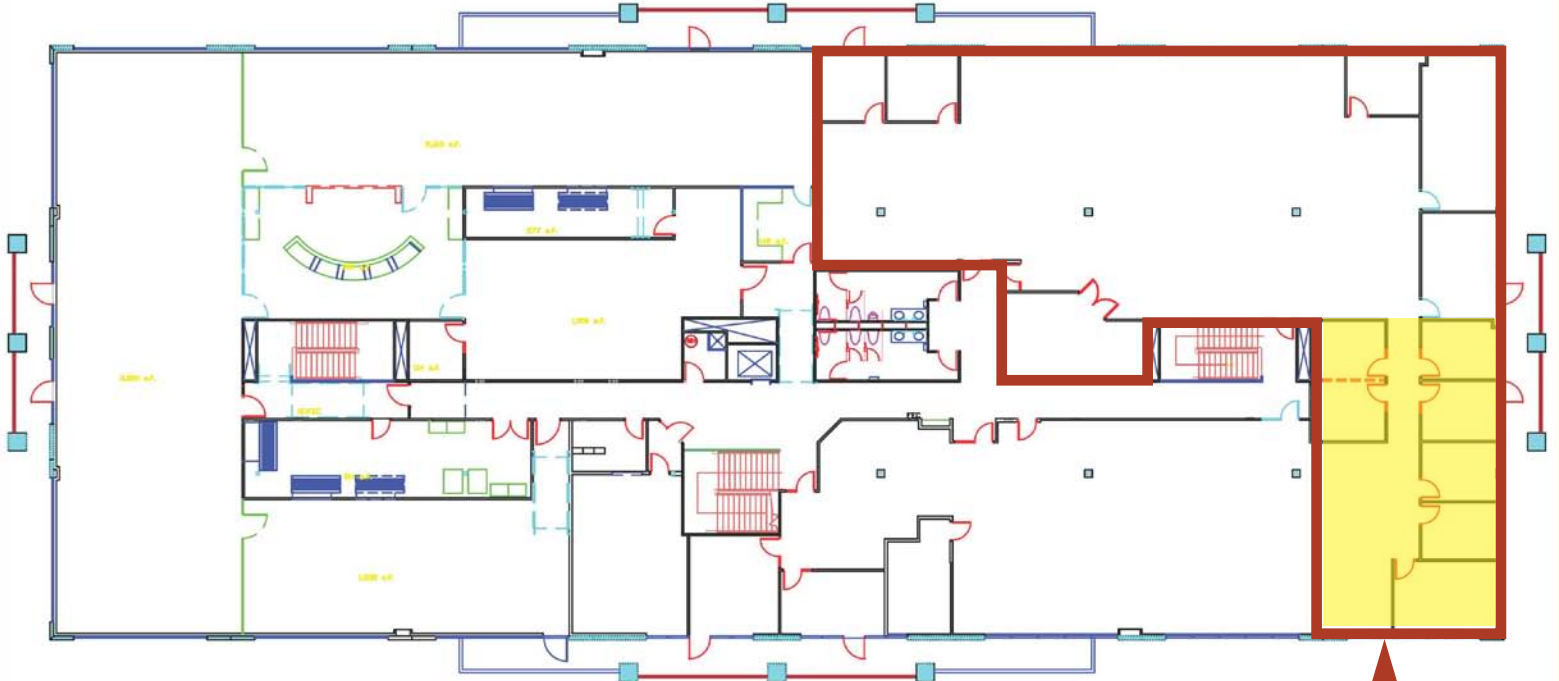


This information was obtained from sources believed reliable but cannot be guaranteed. Any opinions or estimates are used for example only.

# Quail Court

1500 S Eagle Flight Way - Boise, ID  
OFFICE SPACE FOR LEASE

Second Floor  
Suite 200 - 7,136 SF  
Can be demised



Approx. 1,900 SF  
Available, with current  
access through Solution Pro

This information was obtained from sources believed reliable but cannot be guaranteed. Any opinions or estimates are used for example only.