

Ponderosa Plaza

8505 W Overland - Boise, ID

OFFICE / RETAIL SPACE FOR LEASE

5% TO
PROCURING
BROKER



Property Information:

Submarket: Southwest
Available: Immediately
Bldg Type: Office / Retail
Quality: Class A
Bldg Size: 14,112 SF
Divisible: Yes
of Floors: 1
Parking: 5/1000

Lease Terms:

Lease Term: 3-5 years
Lease Type: NNN
TI Allowance: Negotiable

Listing Comments:

Across from Lowe's and WalMart.

Close to a variety of amenities.

Pylon signage available.

Vanilla shell condition, ready for TI's.

Ample parking.

Space built to suit and ready in 30 days.

6 Months Free Rent with qualifying tenant and 5 year term.

Available Space:

SPACE:	RSF:	RATE:
Suite C	+/- 3,789 SF	\$12.00/SF

Can be divisible to +/- 1,300 SF.

6 MONTHS
FREE RENT!

Contact:

Mike Greene, CCIM

Ph: 208.947.0835

Fx: 208.947.0869

mikeg@tokcommercial.com

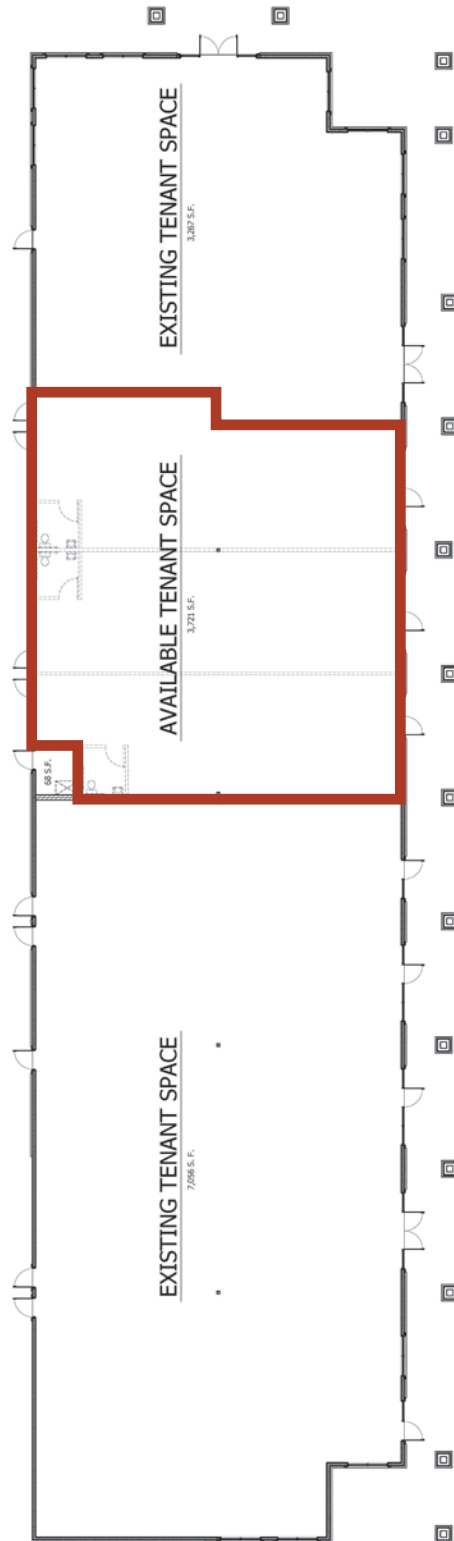
www.tokcommercial.com



Ponderosa Plaza

8505 W Overland - Boise, ID

OFFICE / RETAIL SPACE FOR LEASE



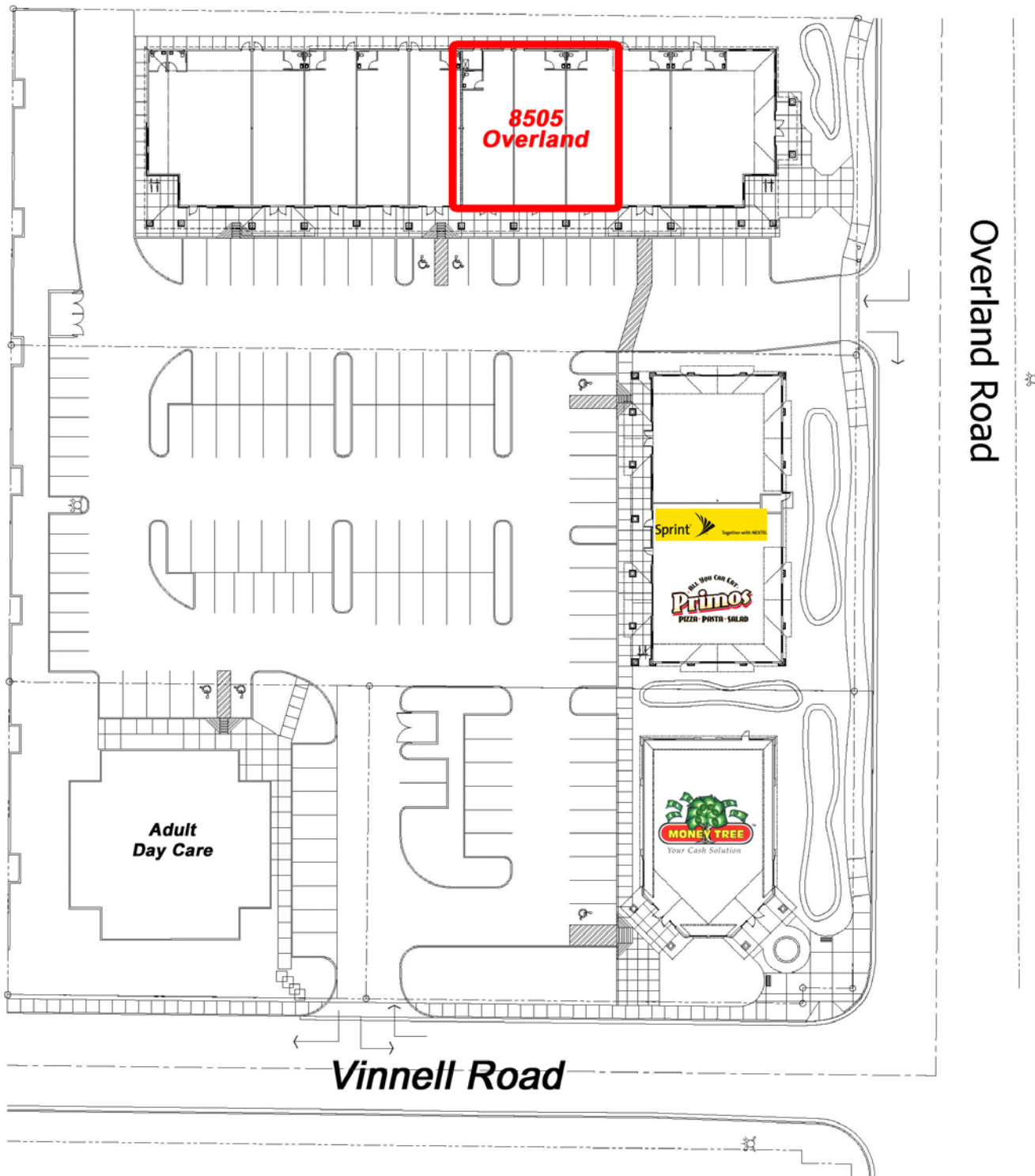
8505 Overland
+/- 3,789 SF

This information was obtained from sources believed reliable but cannot be guaranteed. Any opinions or estimates are used for example only.

Ponderosa Plaza

8505 W Overland - Boise, ID

OFFICE / RETAIL SPACE FOR LEASE



This information was obtained from sources believed reliable but cannot be guaranteed. Any opinions or estimates are used for example only.