

# Plaza Seven Building

5257 Fairview ~ Boise, ID  
**OFFICE SPACE FOR LEASE**



### Property Information:

**Submarket:** West  
**Available:** Immediately  
**Bldg Type:** Office  
**Quality:** Class B  
**Bldg Size:** 28,994 SF  
**Divisible:** Yes  
**# of Floors:** 2  
**Parking:** Ample

### Lease Terms:

**Lease Term:** 3-5 years  
**Lease Type:** FLSVEJ  
**TI Allowance:** Negotiable

### Listing Comments:

- Excellent location on the I-84 Connector.
- Newly renovated lobby and common areas.
- Close to downtown Boise.
- Easy access to the I-84 Connector.
- Free on-site parking in expanded parking area.
- DSL available.

### Available Space:

<b>SPACE:</b>	<b>RSF:</b>	<b>RATE:</b>
Suite 150*	1,719 SF	\$12.00/SF
Suite 160*	379 SF	\$12.00/SF
Suite 170*	380 SF	\$12.00/SF
Suite 180*	1,081 SF	\$12.00/SF
Suite 192	605 SF	\$12.00/SF
Suite 193	1,787 SF	\$12.00/SF
Suite 195**	7,205 SF	\$12.00/SF
Suite 220	2,046 SF	\$12.00/SF
Suite 230	1,026 SF	\$12.00/SF
Suite 232	436 SF	\$12.00/SF
Suite 235	1,619 SF	\$12.00/SF
Suite 260	1,655 SF	\$12.00/SF

\*Suites can be combined for 3,559 SF

\*\*Suite 195 can be demised to approximately 1,500 SF



### Contact:

**Mark Cleverley**  
 Ph: 208.947.5507  
 Fx: 208.947.0869  
 markc@tokcommercial.com  
 www.tokcommercial.com

# Plaza Seven Building

5257 Fairview ~ Boise, ID

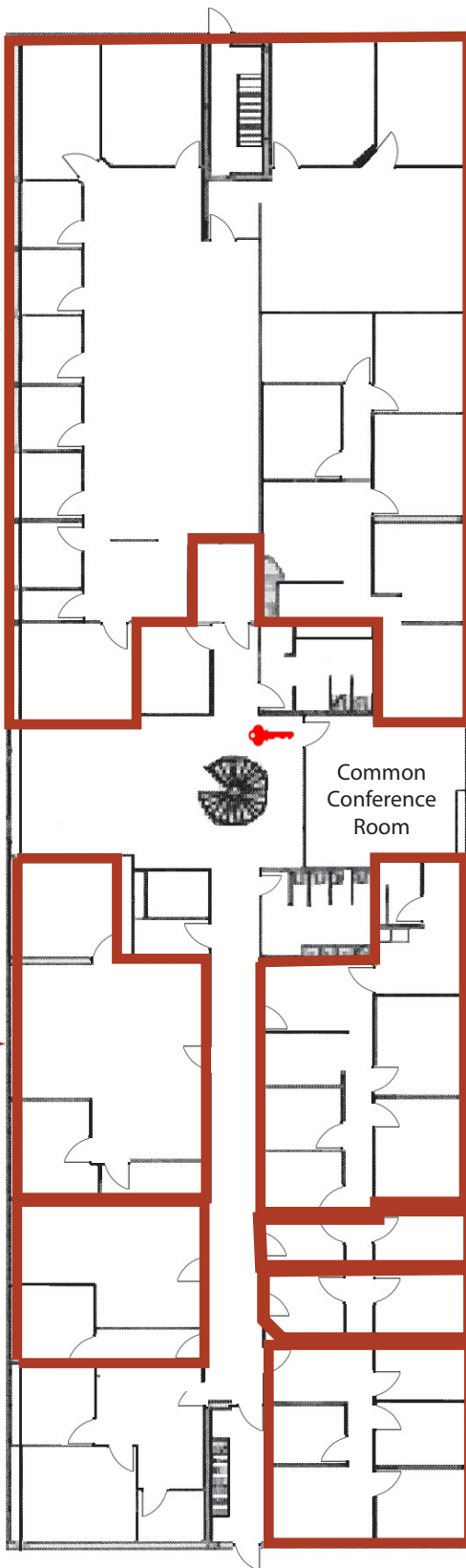
OFFICE SPACE FOR LEASE

## First Floor

Suite 195  
7,205 SF  
Can be demised  
to approx. 1,500 SF



LOCKBOX



Common  
Conference  
Room

\*Suites 150, 160, 170 & 180  
can be combined for 3,559 SF

Suite 193  
1,787 SF

Suite 150\*  
1,719 SF

Suite 192  
605 SF

Suite 160\*  
379 SF  
Suite 170\*  
380 SF

Suite 180\*  
1,081 SF

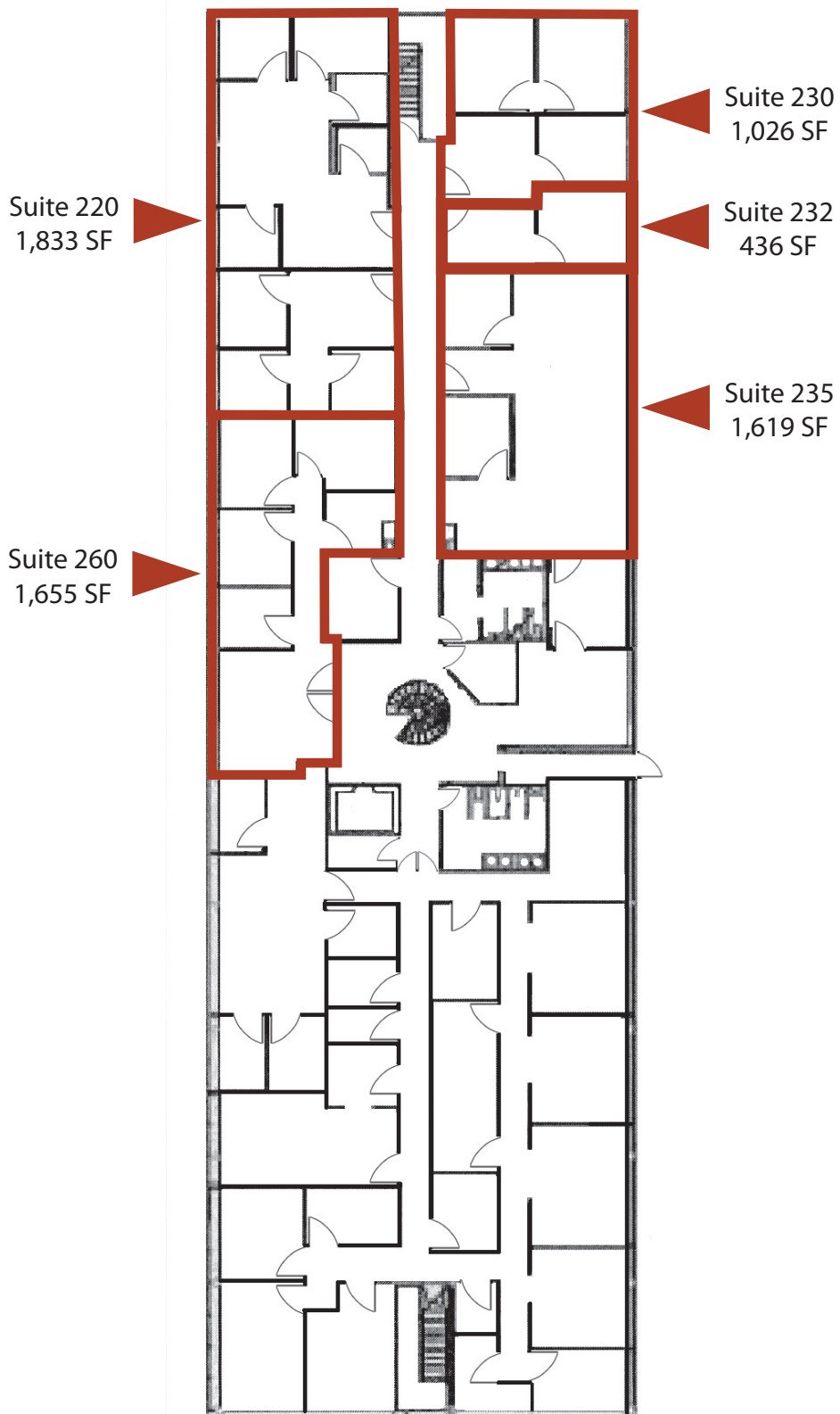


This information was obtained from sources believed reliable but cannot be guaranteed. Any opinions or estimates are used for example only.

# Plaza Seven Building

5257 Fairview ~ Boise, ID  
OFFICE SPACE FOR LEASE

## Second Floor

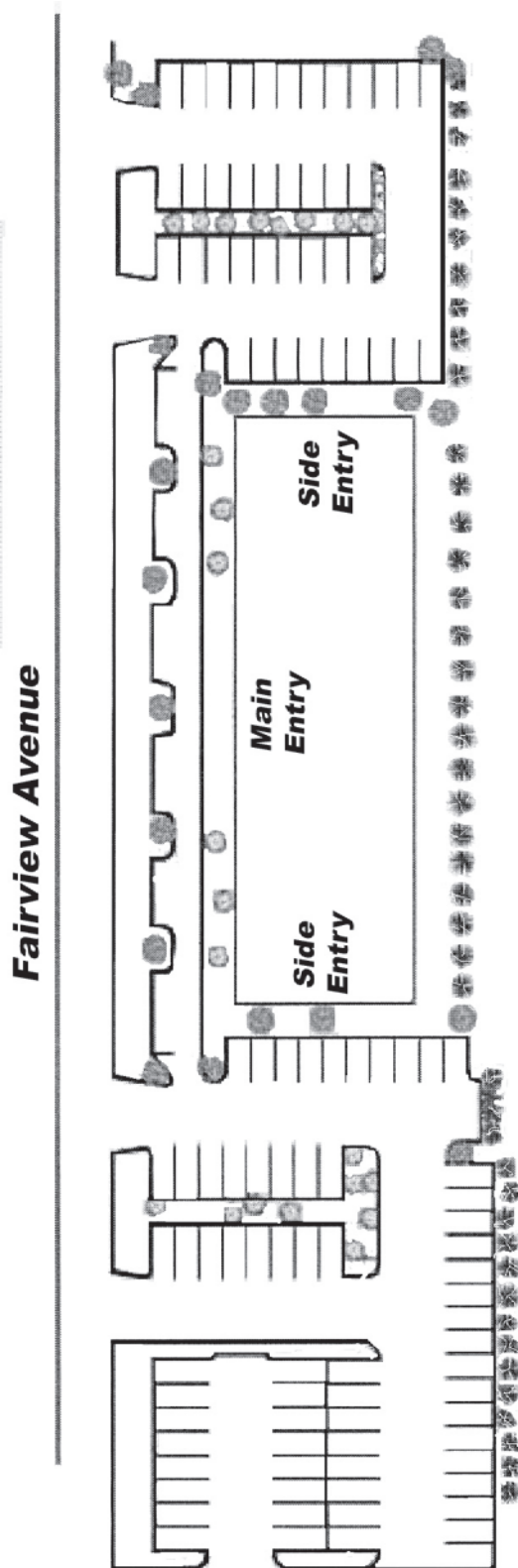


This information was obtained from sources believed reliable but cannot be guaranteed. Any opinions or estimates are used for example only.

# Plaza Seven Building

5257 Fairview ~ Boise, ID  
OFFICE SPACE FOR LEASE

## Site Plan



This information was obtained from sources believed reliable but cannot be guaranteed. Any opinions or estimates are used for example only.