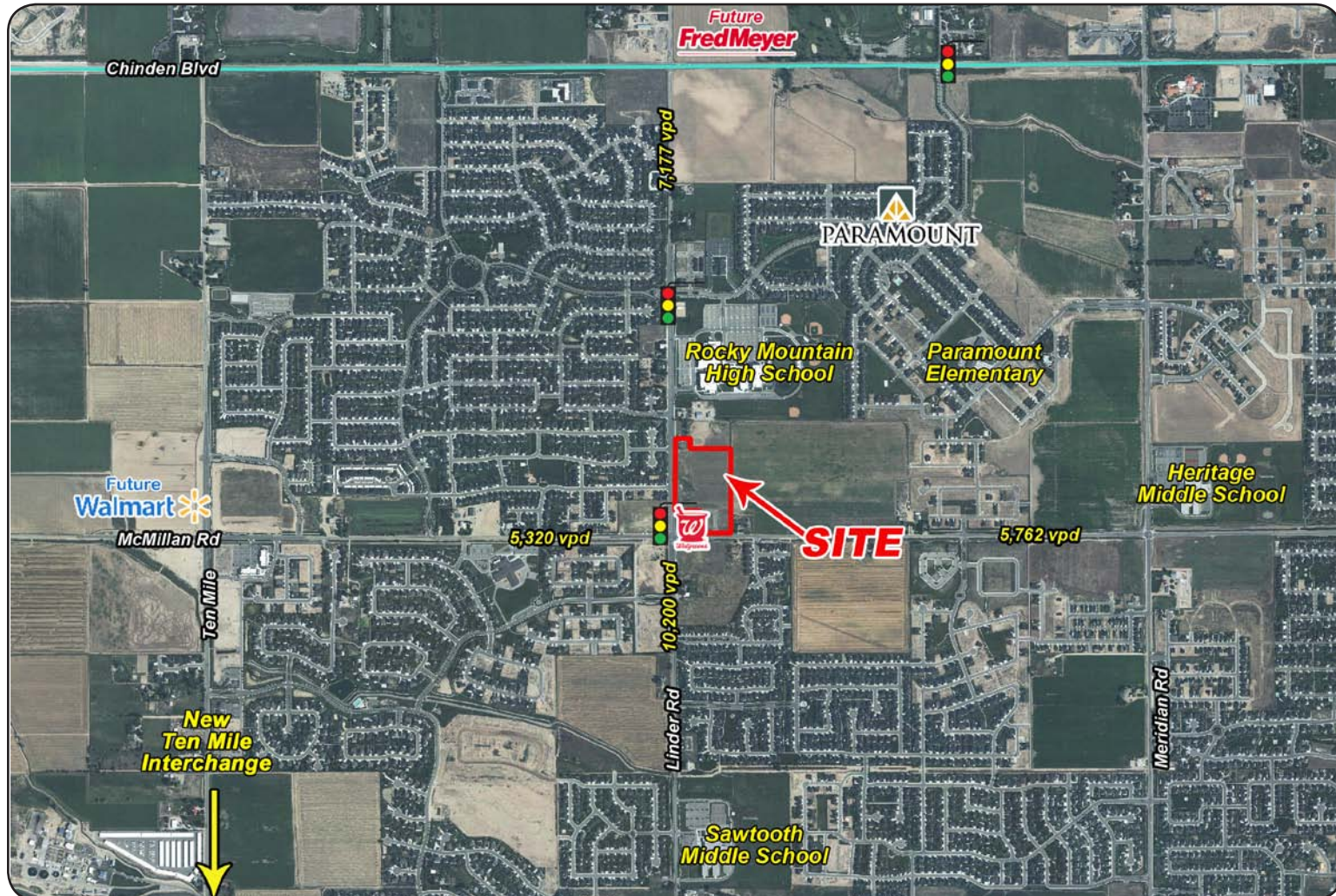


Paramount Marketplace

NEC Linder & McMillan - Meridian, ID
RETAIL / OFFICE PARCELS FOR SALE or LEASE



Listing Comments:

- Up to 12 acres in one contiguous parcel.
- Anchored by Walgreens.
- Meridian is Idaho's fastest growing city, and is centered in the heart of the Boise Metro Area.
- Lighted intersection at Linder Rd. (5 lanes) and McMillan Rd. (3 lanes).
- When complete, Paramount will have over 1,200 homesites, with over 400 currently occupied.
- Area tenants: Lowe's, Target, Albertsons and Kohl's.

Demographics:

Population: 61,971 (3 mi.)
HH Income: \$82,103 (3 mi.)
 2010

Available:

Size: Up to 12 acres in one contiguous parcel.
Zoning: C-G
Utilities: To site.

Contact:

Ben Zamzow, CCIM, CLS
 Ph: 208.947.5514
 Fx: 208.947.0869
 benz@tokcommercial.com
 www.tokcommercial.com

Peter Oliver, SIOR, CCIM
 Ph: 208.947.0816
 Fx: 208.947.0869
 peter@tokcommercial.com
 www.tokcommercial.com



A Development By:

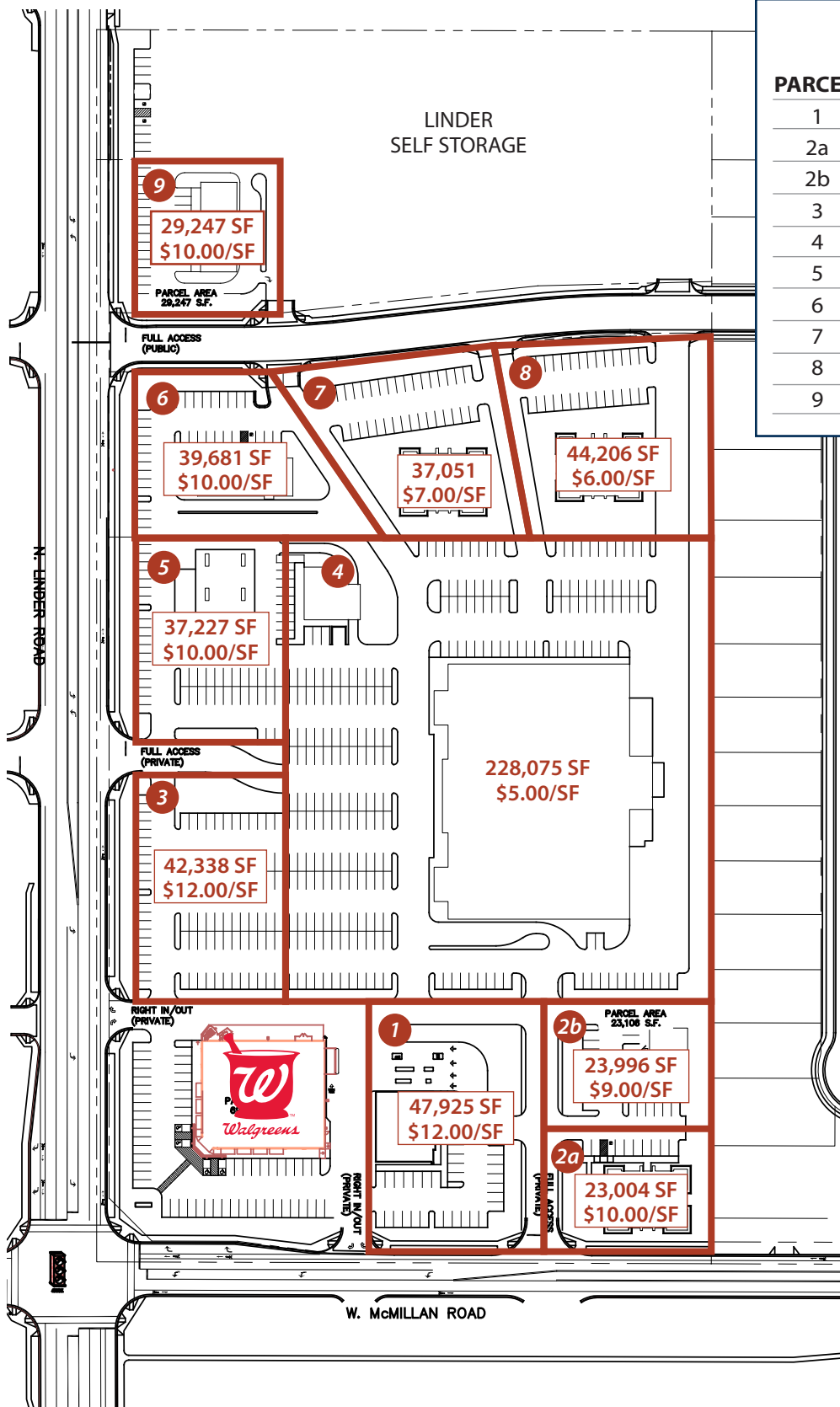


(08/02/11)

This information was obtained from sources believed reliable but cannot be guaranteed. Any opinions or estimates are used for example only.

Paramount Marketplace

NEC Linder & McMillan - Meridian, ID
RETAIL / OFFICE PARCELS FOR SALE or LEASE



Available Lots:

PARCEL:	SIZE:	PRICE/SF:	PRICE:
1	47,925 SF	\$12.00	\$575,100
2a	23,004 SF	\$10.00	\$230,040
2b	23,996 SF	\$9.00	\$215,964
3	42,338 SF	\$12.00	\$508,056
4	228,075 SF	\$5.00	\$1,140,375
5	37,227 SF	\$10.00	\$372,270
6	39,682 SF	\$10.00	\$396,820
7	37,051 SF	\$7.00	\$259,357
8	44,206 SF	\$6.00	\$265,236
9	29,247 SF	\$10.00	\$292,470

**BUILDINGS ARE CONCEPTUAL
PAD SIZES FLEXIBLE**

This information was obtained from sources believed reliable but cannot be guaranteed. Any opinions or estimates are used for example only.

Paramount Marketplace

NEC Linder & McMillan - Meridian, ID
RETAIL / OFFICE PARCELS FOR SALE or LEASE



This information was obtained from sources believed reliable but cannot be guaranteed. Any opinions or estimates are used for example only.