

# Owyhee Park Plaza

3501 W Elder St - Boise, ID  
**OFFICE SPACE FOR LEASE**

**New  
 Lease Rate!!**



**Property Information:**

**Submarket:** Central  
**Available:** Immediately  
**Bldg Type:** Office  
**Quality:** Class A  
**Bldg Size:** 53,236 SF  
**Divisible:** Yes  
**# of Floors:** 3  
**Parking:** 4:1000

**Lease Terms:**

**Lease Term:** 3-5 years  
**Lease Type:** FLSVEJ  
**TI Allowance:** Negotiable

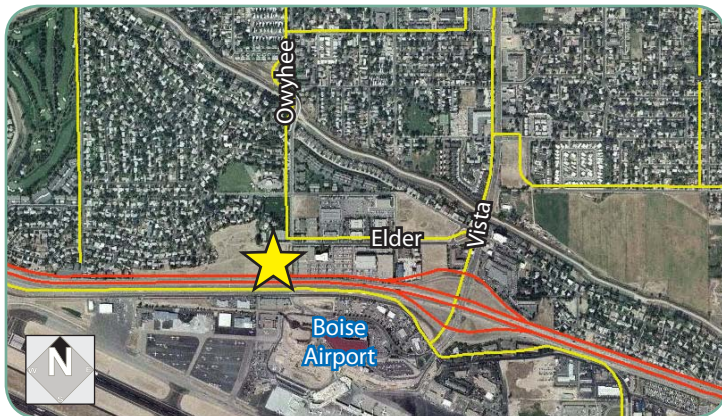
**Listing Comments:**

- Quick access to I-84 and the Boise Airport.
- On-site shower and locker rooms available.
- Secured underground parking and storage units available in garage.
- New Class A Office Building.
- Additional secured, underground parking available for \$45.00 per stall.

**Available Space:**

SPACE:	RSF:	RATE:
1st Floor		
Suite 102	1,247 SF	\$17.00/SF
Suite 106	1,912 SF	\$19.50/SF
Suite 200	8,393 SF	\$17.95/SF
Basement/Garage	3,931 SF	\$8.00/SF

2nd floor can be demised to 3,000 SF.



**Contact:**

**Mark Cleverley**  
 Ph: 208.947.5507  
 Fx: 208.947.0869  
 mark@tokcommercial.com  
 www.tokcommercial.com

**Grove T. Hummert**  
 Ph: 208.947.0804  
 Fx: 208.947.0869  
 grove@tokcommercial.com  
 www.tokcommercial.com

**Patrick Shalz, SIOR**  
 Ph: 208.947.0834  
 Fx: 208.947.0869  
 pat@tokcommercial.com  
 www.tokcommercial.com



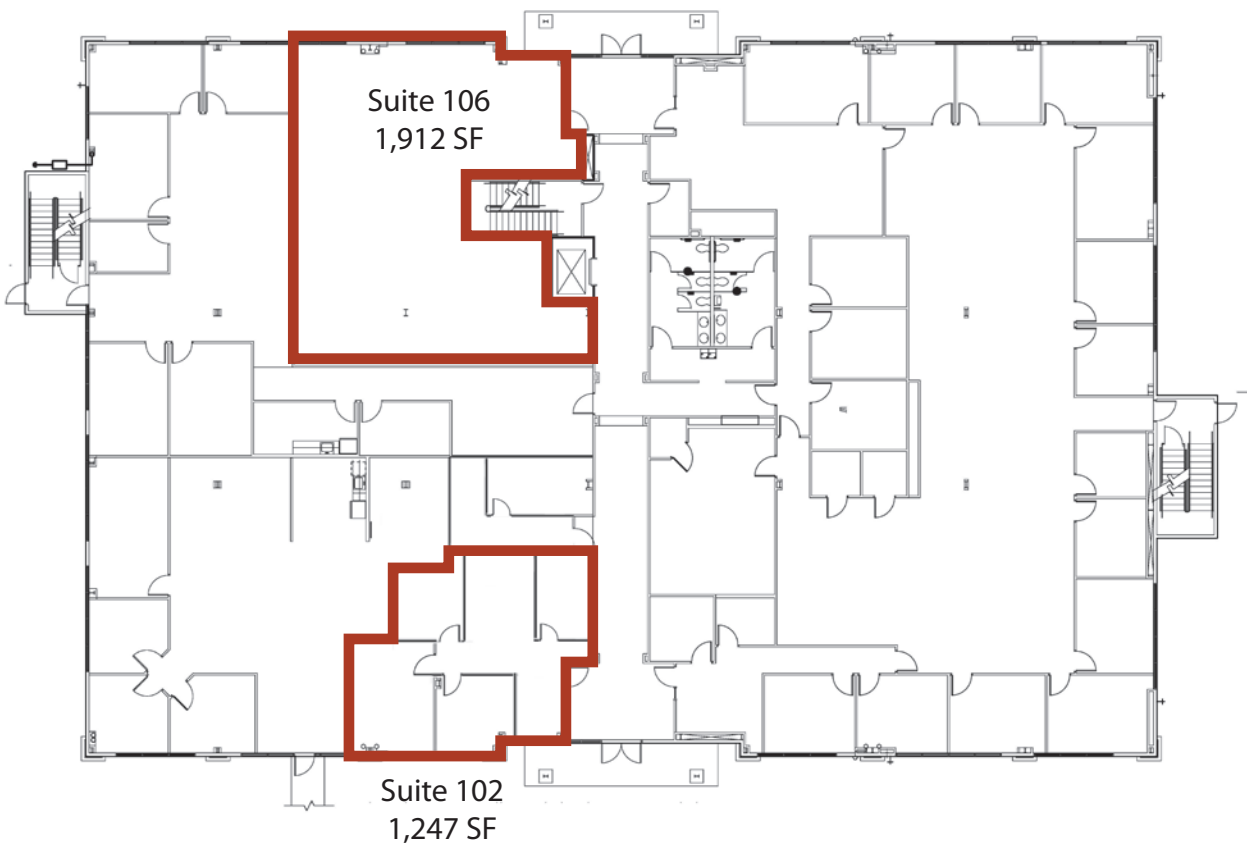
(03/13/12) This information was obtained from sources believed reliable but cannot be guaranteed. Any opinions or estimates are used for example only.

# Owyhee Park Plaza

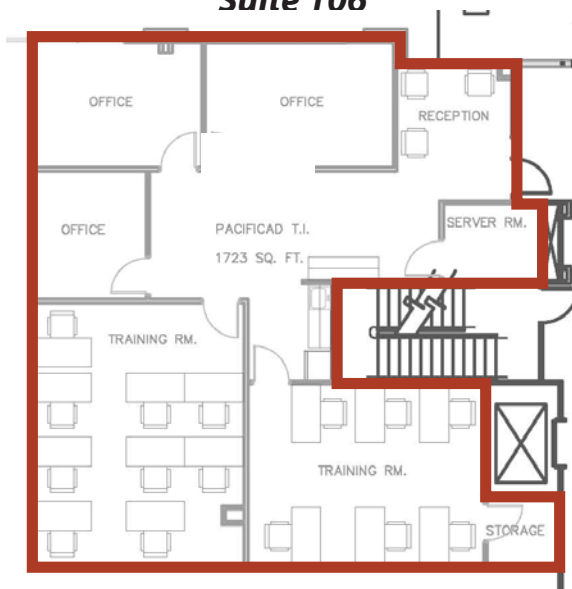
3501 W Elder St - Boise, ID

OFFICE SPACE FOR LEASE

## First Floor



## Conceptual Floor Plan Suite 106



This information was obtained from sources believed reliable but cannot be guaranteed. Any opinions or estimates are used for example only.

# Owyhee Park Plaza

3501 W Elder St - Boise, ID

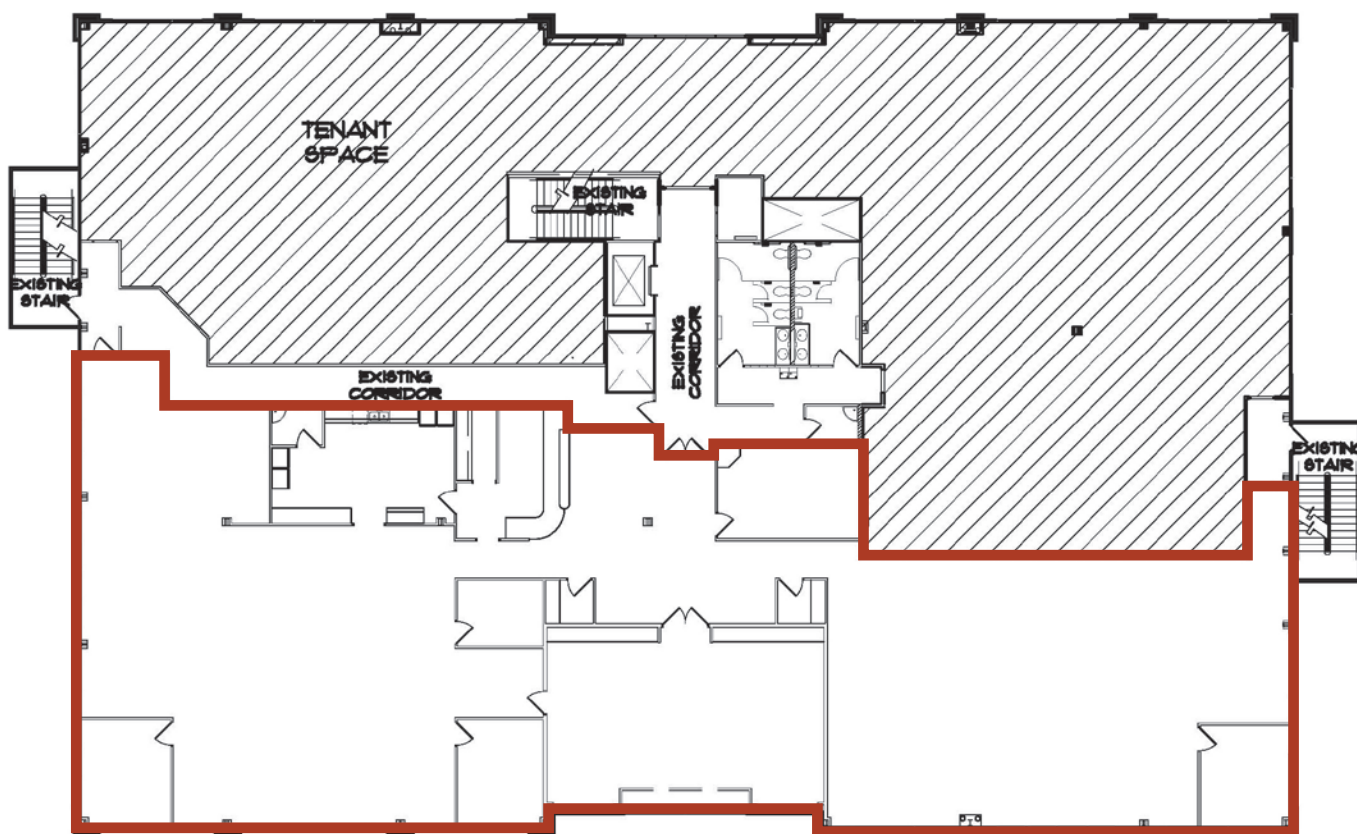
OFFICE SPACE FOR LEASE

## Second Floor

Suite 200

8,393 SF Available

*Can be demised to 3,000 SF*



This information was obtained from sources believed reliable but cannot be guaranteed. Any opinions or estimates are used for example only.

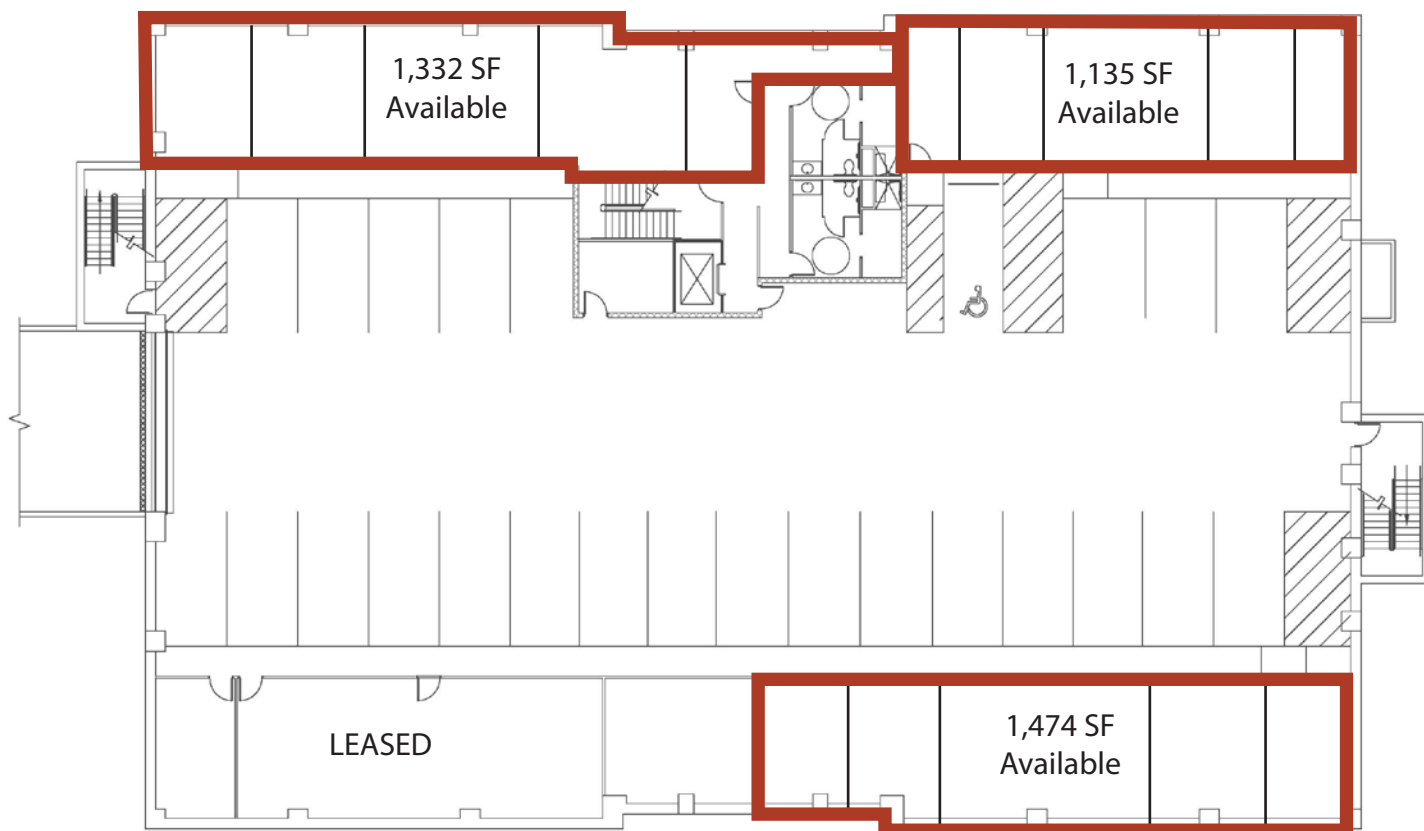
# Owyhee Park Plaza

3501 W Elder St - Boise, ID

OFFICE SPACE FOR LEASE

## Basement Storage Garage

3,931 SF Available



This information was obtained from sources believed reliable but cannot be guaranteed. Any opinions or estimates are used for example only.