

# Olympus Building

6225 N. Meeker Place - Boise, ID

OFFICE SPACE FOR LEASE

REDUCED  
RATE!



## Property Information:

<b>Submarket:</b>	West Boise
<b>Available:</b>	Immediately
<b>Bldg Type:</b>	Office
<b>Quality:</b>	Class A
<b>Bldg Size:</b>	22,784 SF
<b>Divisible:</b>	Yes
<b># of Floors:</b>	2
<b>Parking:</b>	4:1000
<b>Zoning:</b>	T-1D
<b>Energy Use Rating:</b>	69 (scale 1-100)

## Lease Terms:

<b>Lease Term:</b>	3-5 years
<b>Lease Type:</b>	FLSV
<b>TI Allowance:</b>	As Is

## Listing Comments:

Located in the Boise Research Center.

4:1000 parking.

Built out space; ready to occupy.

Close to professional services.

Small desirable spaces.

Space to be leased As Is.

## Available Space:

SPACE:	RSF:	RATE:
Suite 200	2,844 SF	<del>\$14.00/SF</del> \$11.95/SF



## Contact:

### Grove T. Hummert

Ph: 208.947.0804

Fx: 208.947.0869

grove@tokcommercial.com

www.tokcommercial.com

### Patrick Shalz, SIOR

Ph: 208.947.0834

Fx: 208.947.0869

pat@tokcommercial.com

www.tokcommercial.com



(11/14/11)

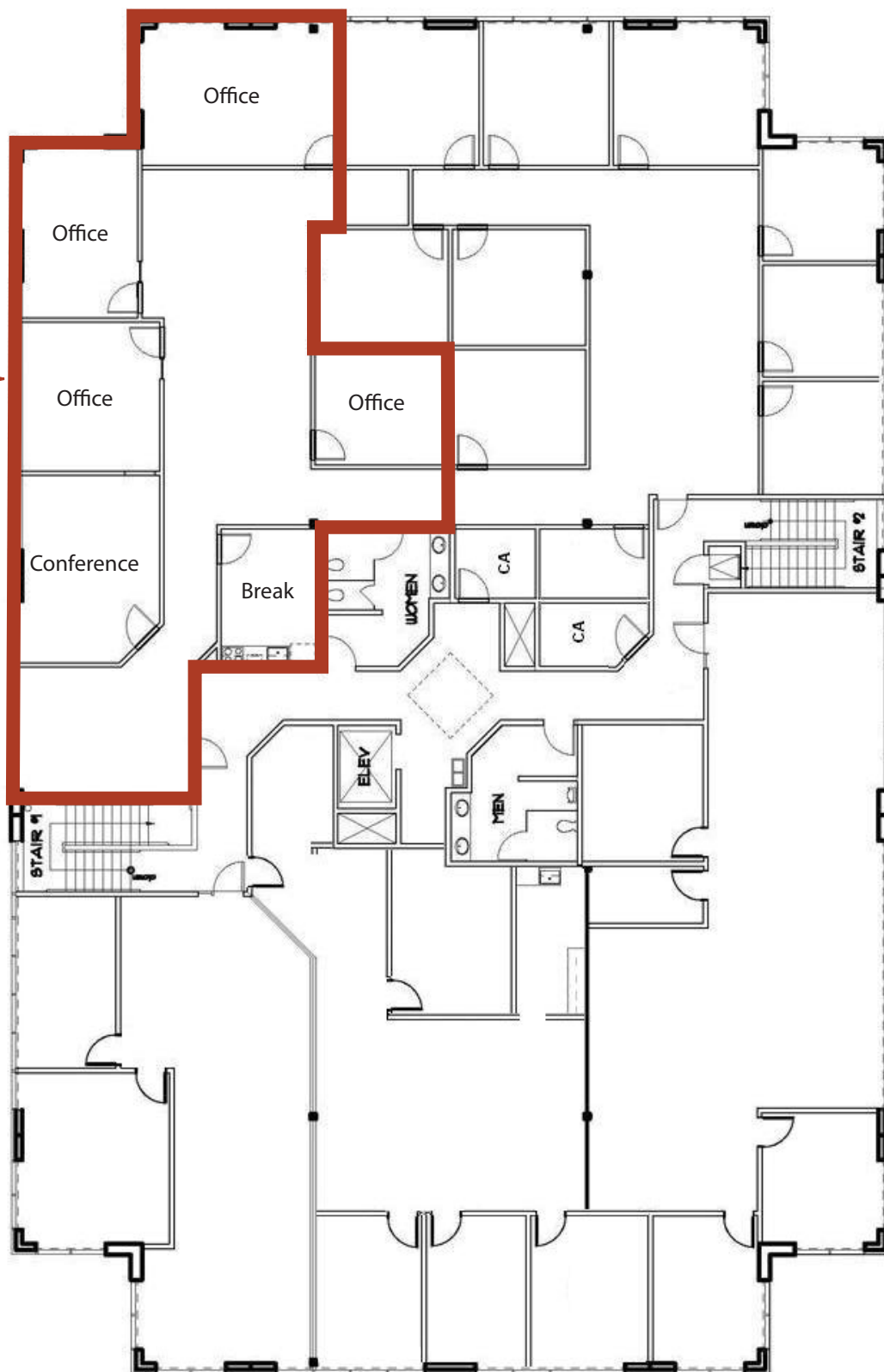
This information was obtained from sources believed reliable but cannot be guaranteed. Any opinions or estimates are used for example only.

# Olympus Building

6225 N. Meeker Place - Boise, ID

OFFICE SPACE FOR LEASE

Suite 200  
2,844 SF



This information was obtained from sources believed reliable but cannot be guaranteed. Any opinions or estimates are used for example only.