

Northpointe

NWC McMillan & Linder - Meridian, ID
PRIME RETAIL / OFFICE LOTS FOR SALE or LEASE



Listing Comments:

Adjacent to new Walgreen's, Rocky Mountain High School and the newest Meridian neighborhoods.

C-G zoning allows for the widest variety of commercial uses.



Available:

PARCEL:	ACRES:	PRICE/SF:	PRICE:
1	0.984	\$8.00	\$342,904
2	0.863	\$14.00	\$526,292
3	1.667	\$12.00	\$871,374
4	0.59	Contact Agent	

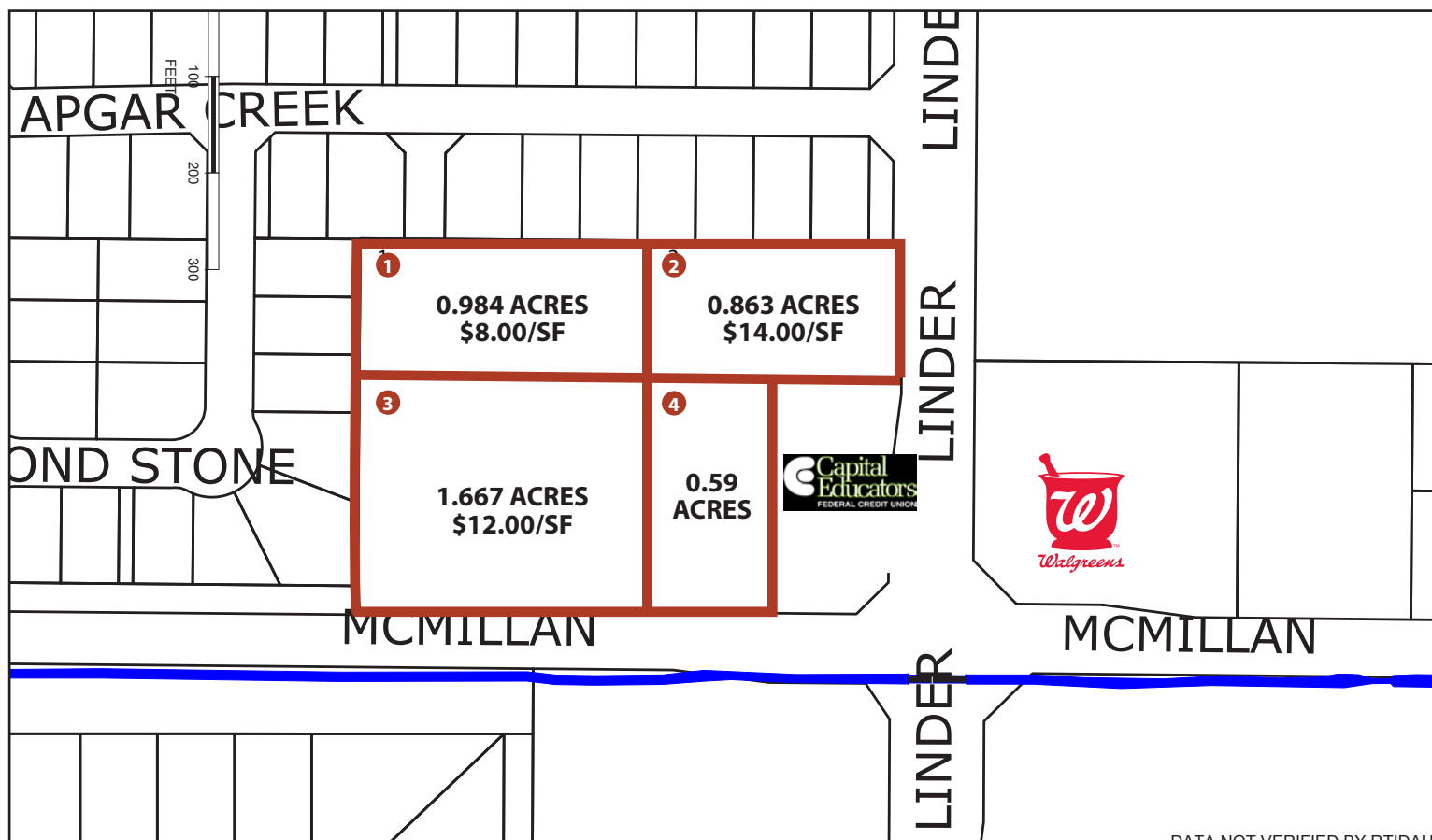
Contact:

Bob Mitchell, CSM
 PH: 208.947.0836
 FX: 208.947.0869
 bob@tokcommercial.com
 www.tokcommercial.com



Northpointe

NWC McMillan & Linder - Meridian, ID
PRIME RETAIL / OFFICE LOTS FOR SALE or LEASE



DATA NOT VERIFIED BY RTIDAW

This information was obtained from sources believed reliable but cannot be guaranteed. Any opinions or estimates are used for example only.