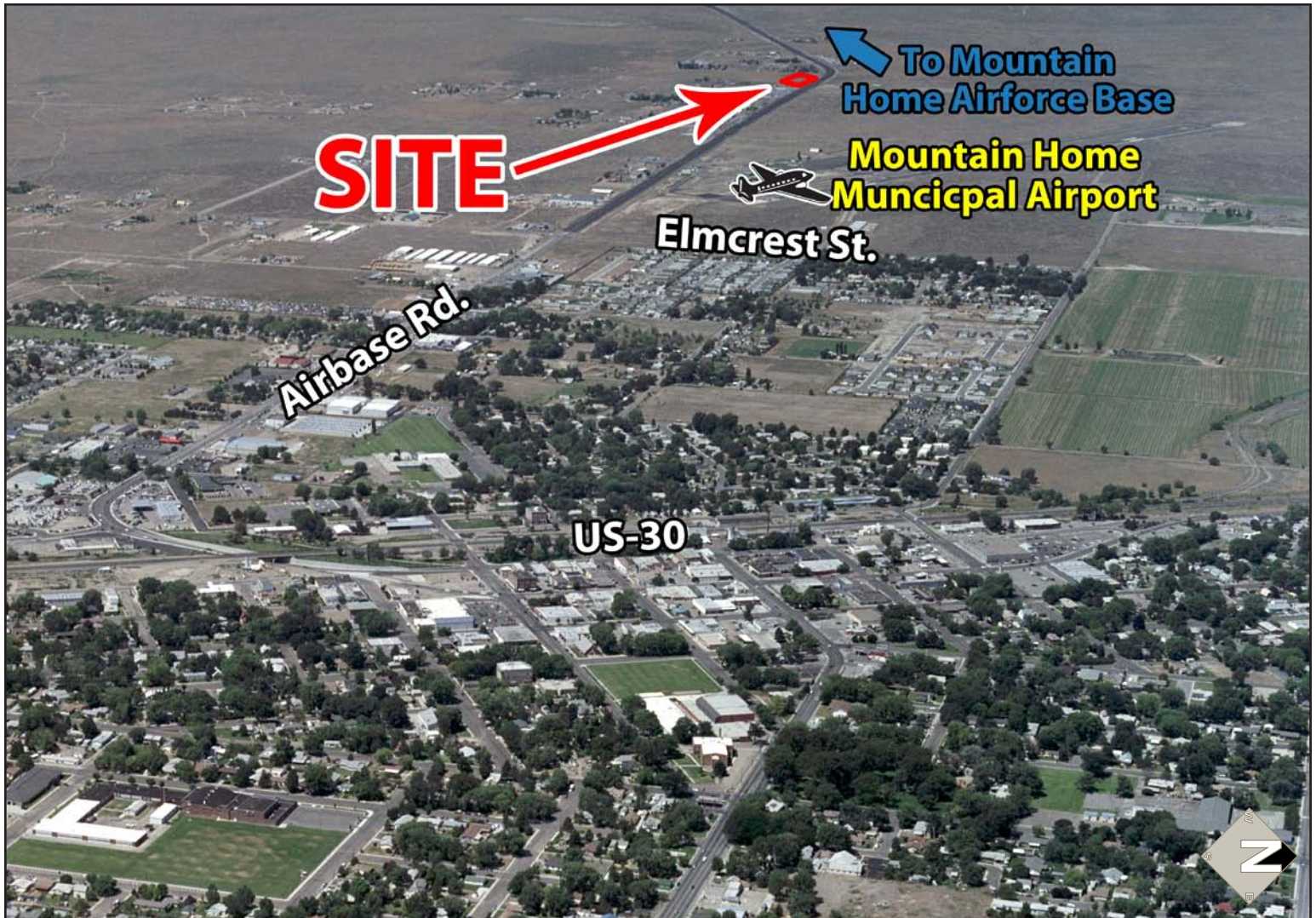


# NIGHT SKY VIEW SUBDIVISION LAND

SEC AIRBASE ROAD & S. 42ND W., MOUNTAIN HOME, ID 83647

## DEVELOPMENT LAND FOR SALE



**THORNTON OLIVER KELLER**  
COMMERCIAL REAL ESTATE

*Experience Results.*

### CONTACT:

**Michael Ballantyne, CCIM**

PH: 208.947.0831

FX: 208.947.0869

mjb@tokcommercial.com

www.tokcommercial.com

**Lenny Nelson**

PH: 208.947.0806

FX: 208.947.0869

lenny@tokcommercial.com

www.tokcommercial.com



### AVAILABLE:

**Size:** Eleven 1.0 ± Acre Residential Lots

**Price:** Contact Agent

**Zoning:** CUP - 11 Lot Subdivision. Located in the County.

### COMMENTS:

- Bulk Sale of 11 Finished Residential Lots.
- Located Off of Airbase Road.
- Paved Cul-De-Sac.

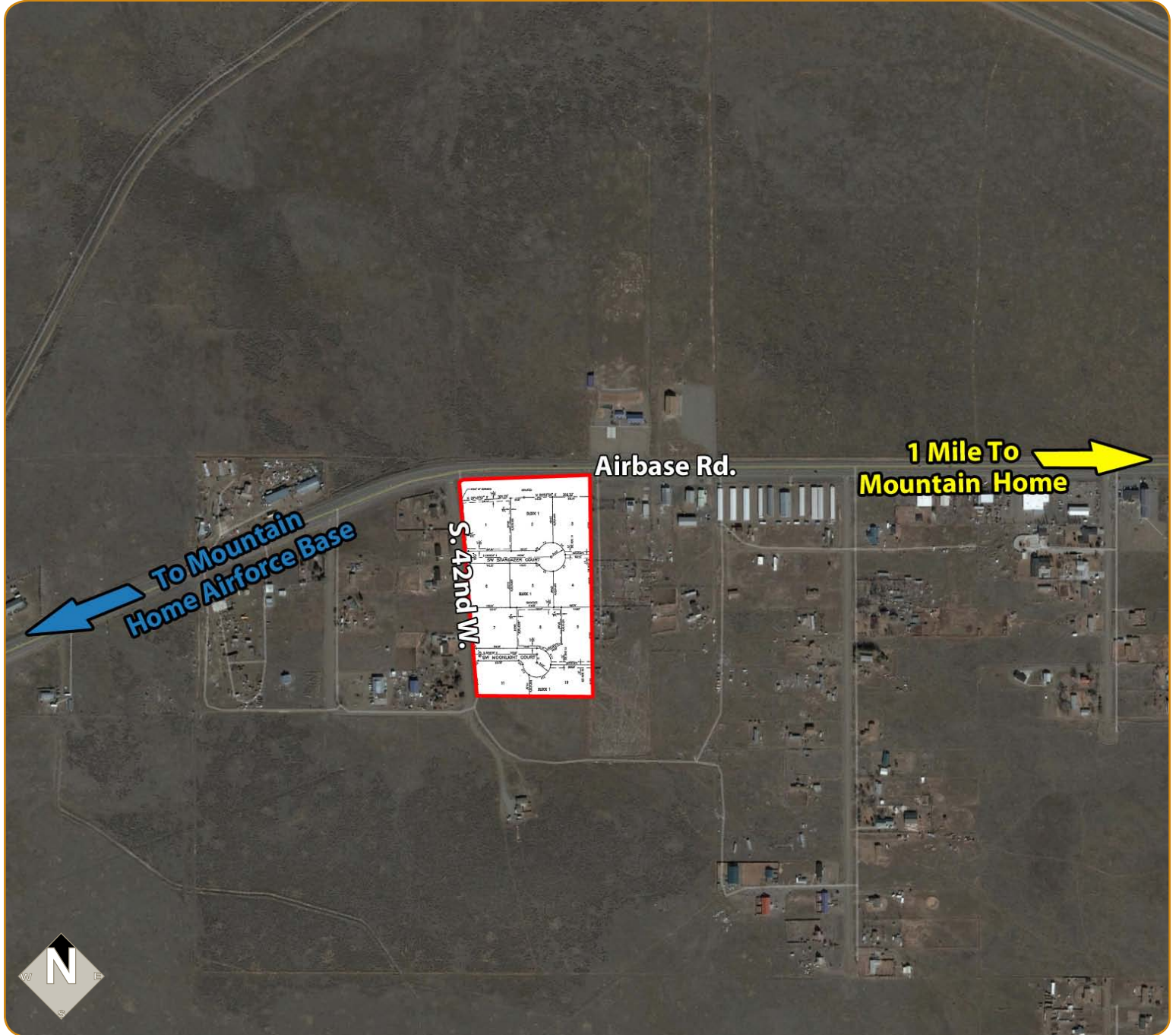
(07/01/11)

This information was obtained from sources believed reliable but cannot be guaranteed. Any opinions or estimates are used for example only.

# NIGHT SKY VIEW SUBDIVISION LAND

SEC AIRBASE ROAD & S. 42ND W., MOUNTAIN HOME, ID 83647

DEVELOPMENT LAND FOR SALE



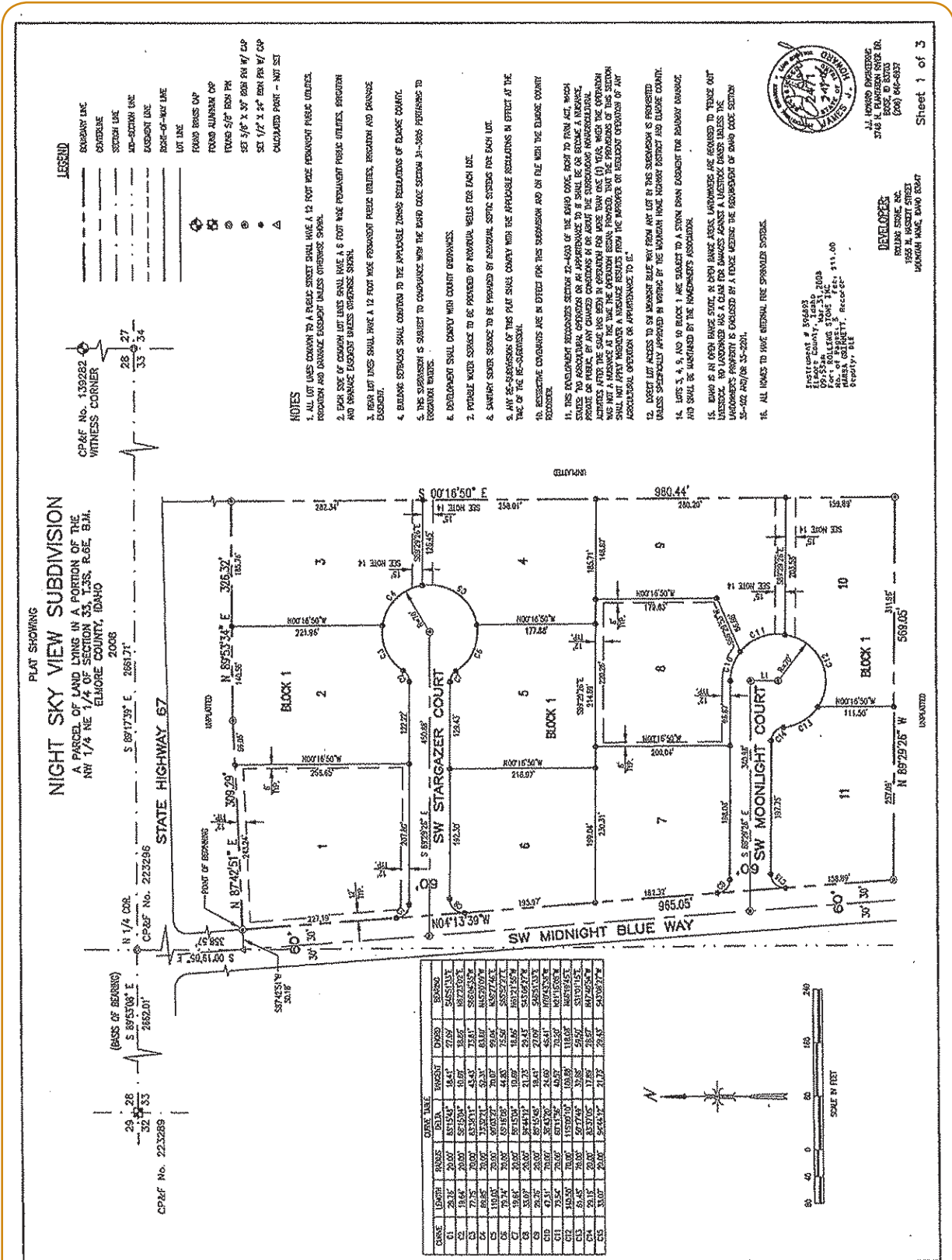
This information was obtained from sources believed reliable but cannot be guaranteed. Any opinions or estimates are used for example only.

250 S. FIFTH STREET • BOISE, IDAHO • 208.378.4600 • WWW.TOKCOMMERCIAL.COM

# NIGHT SKY VIEW SUBDIVISION LAND

SEC AIRBASE ROAD & S. 42ND W., MOUNTAIN HOME, ID 83647

## DEVELOPMENT LAND FOR SALE



This information was obtained from sources believed reliable but cannot be guaranteed. Any opinions or estimates are used for example only.