

Majestic Marketplace East

2238 & 2310 - Meridian, ID
RETAIL SPACE FOR LEASE



Demographics:

Population: 56,094 (3 mi.)
HH Income: \$86,311 (3 mi.)
2009

Listing Comments:

A new multi-tenant retail development anchored by Majestic Cinemas (19 screens) and Harley Davidson's regional showroom.

Directly off of the I-84 - Eagle Road interchange.

Situated in Meridian, Idaho's fastest growing city.

In close proximity to Silverstone and El Dorado Business Parks with 8,500 current employees - 13,500 upon completion.

Directly across from Resolution Business Park.

Directly across from Mountain View High School with 2,500 students.

Available Space:

SPACE:	RSF:	RATE:
Ste. 120	2,631 SF	-\$21.00 \$15.95
Divisible to 1,200 SF		
Ste. 140	1,842 SF	-\$22.00 \$15.95

Key Tenants:

Port of Subs, Di~VINE Wine Bar, The Griddle, Nails Plus, Rudy's Neighborhood Pub and **new tenant AAA of Idaho.**

Contact:

Bob Mitchell, CSM
Ph: 208.947.0836
Fx: 208.947.0869
bob@tokcommercial.com
www.tokcommercial.com



Majestic Marketplace East

2238 & 2310 - Meridian, ID
RETAIL SPACE FOR LEASE

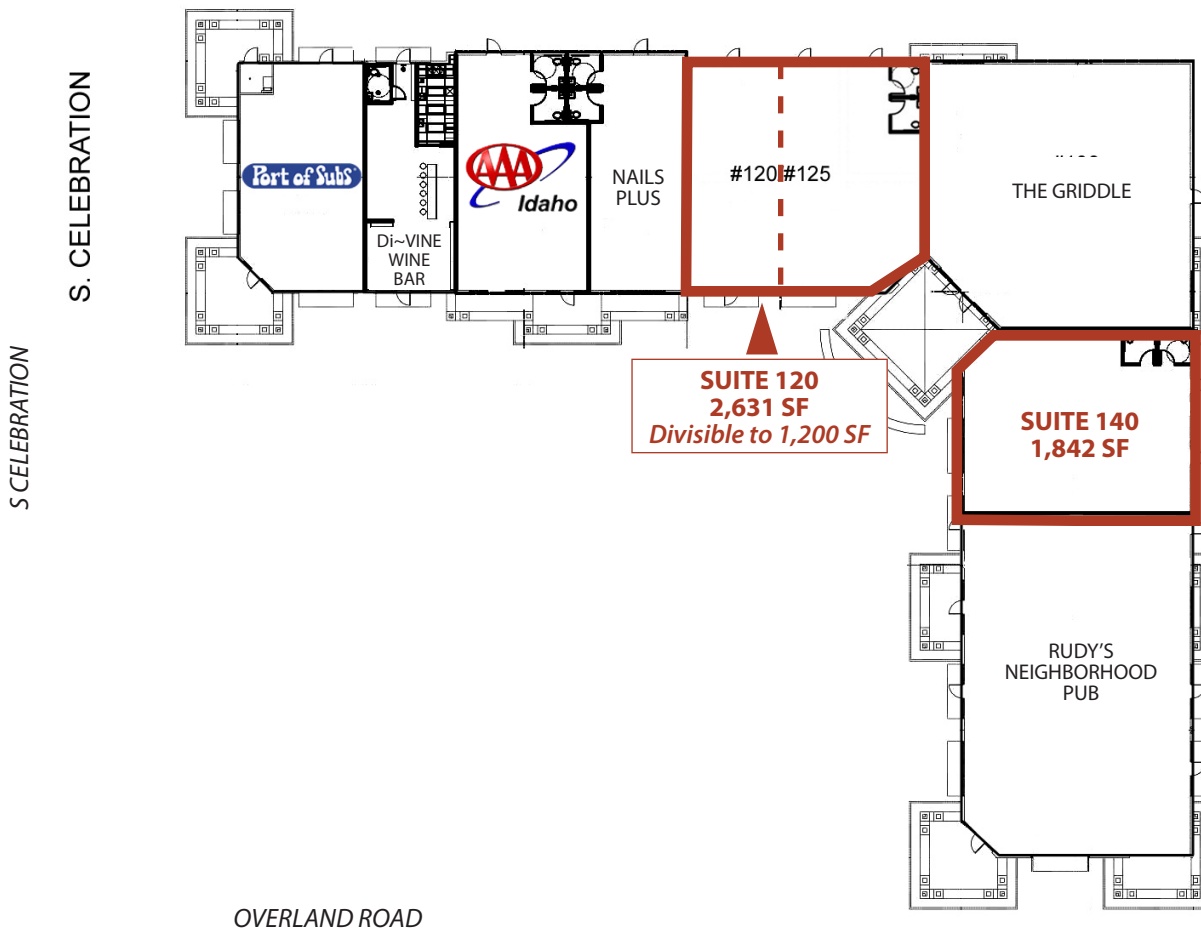


This information was obtained from sources believed reliable but cannot be guaranteed. Any opinions or estimates are used for example only.

Majestic Marketplace East

2238 & 2310 - Meridian, ID

RETAIL SPACE FOR LEASE



This information was obtained from sources believed reliable but cannot be guaranteed. Any opinions or estimates are used for example only.