

# Key Financial Center

702 W Idaho - Boise, ID

**CLASS A OFFICE SPACE FOR LEASE**



## Property Information:

**Submarket:** Downtown  
**Available:** Immediately  
**Bldg Type:** Office  
**Quality:** Class A  
**Bldg Size:** 108,937 SF  
**Divisible:** Yes  
**# of Floors:** 12  
**Parking:** Attached covered garage

## Lease Terms:

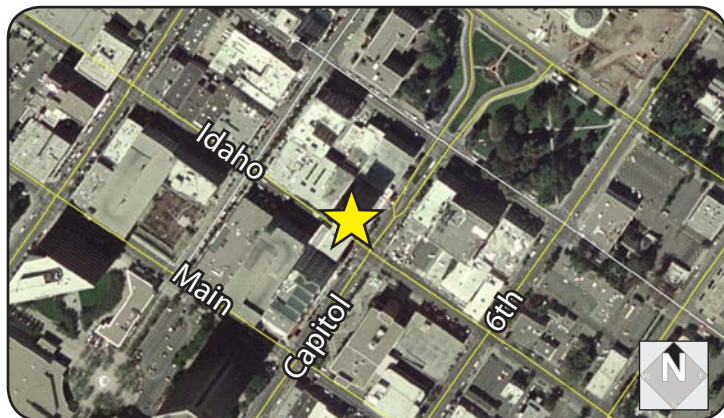
**Lease Term:** 3-5 years  
**Lease Type:** FLSV  
**TI Allowance:** Negotiable

## Listing Comments:

- Class A office building in the heart of downtown Boise.
- Key Financial amenities include workout room with showers, break room, mail room, bike storage, and an outdoor patio area.
- Attached parking garage with direct access to the 4th floor.

## Available Space:

SPACE:	RSF:	RATE:
Various Suites (3rd floor)	225 SF	\$400/month
4th Floor	8,020 SF	\$19.00/SF



## Contact:

**Mike Greene, CCIM**  
 Ph: 208.947.0835  
 Fx: 208.947.0869  
 mikeg@tokcommercial.com  
 www.tokcommercial.com



**Peter Oliver, SIOR, CCIM**  
 Ph: 208.947.0816  
 Fx: 208.947.0869  
 peter@tokcommercial.com  
 www.tokcommercial.com



(02/15/12)

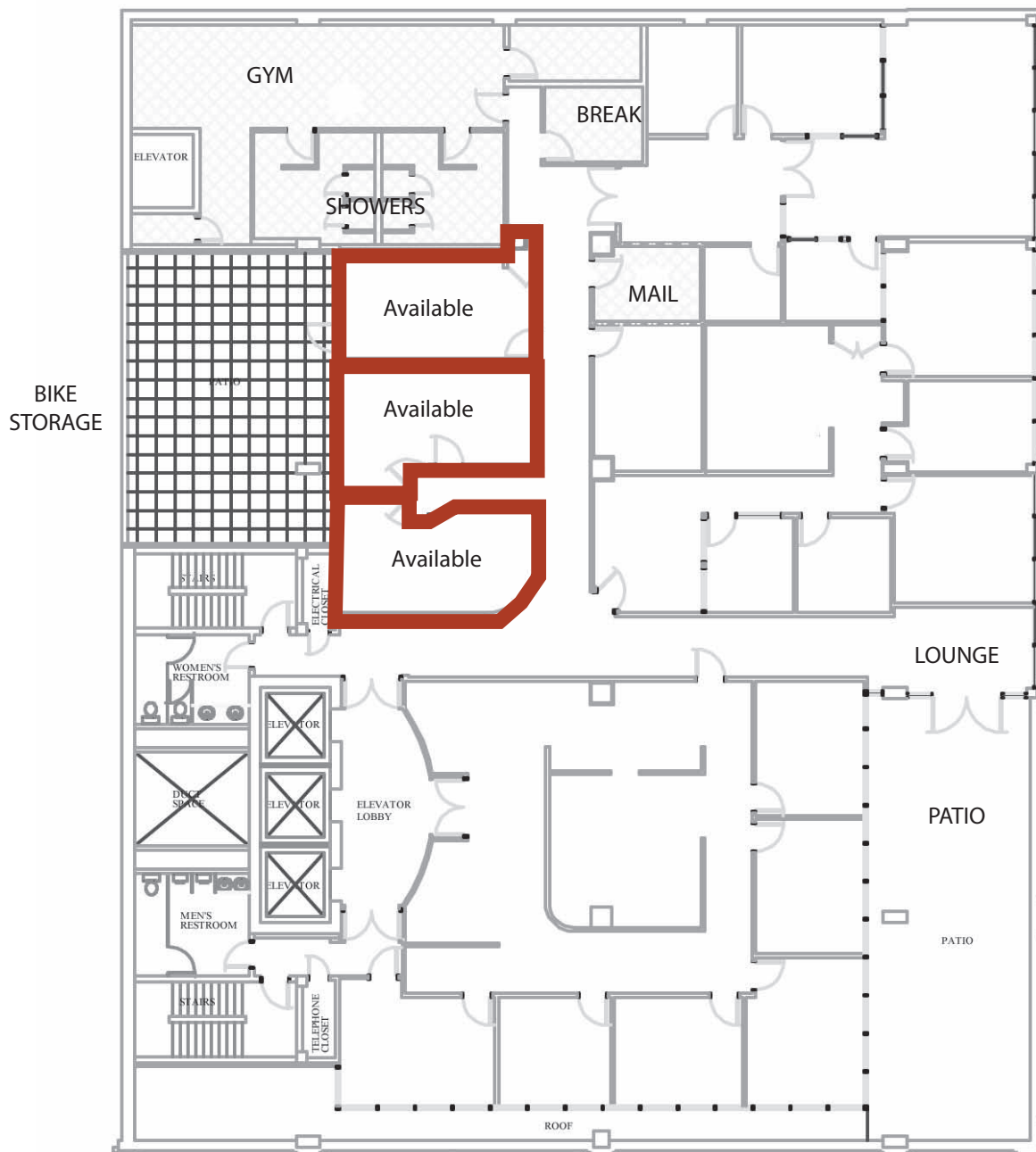
This information was obtained from sources believed reliable but cannot be guaranteed. Any opinions or estimates are used for example only.

# Key Financial Center

702 W Idaho - Boise, ID

CLASS A OFFICE SPACE FOR LEASE

## Various Suites 225 SF



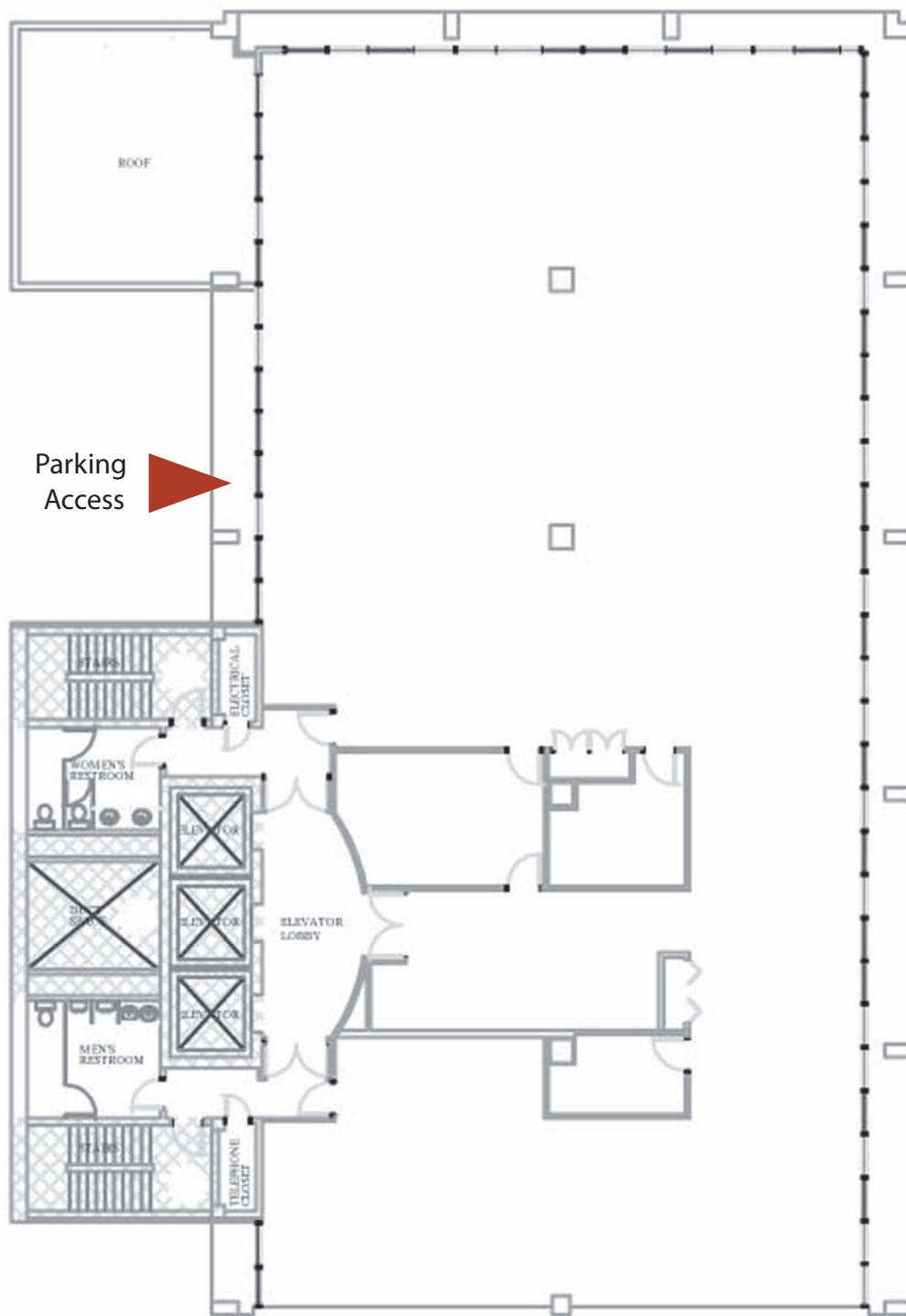
This information was obtained from sources believed reliable but cannot be guaranteed. Any opinions or estimates are used for example only.

# Key Financial Center

702 W Idaho - Boise, ID

CLASS A OFFICE SPACE FOR LEASE

## 4th Floor



This information was obtained from sources believed reliable but cannot be guaranteed. Any opinions or estimates are used for example only.