

# Kendall Center

5403 - 5519 Kendall Street - Boise, ID  
OFFICE / WAREHOUSE SPACE FOR LEASE



## Property Information:

<b>Submarket:</b>	Central
<b>Available:</b>	Immediately
<b>Bldg Type:</b>	CTU
<b>Bldg Size:</b>	7 Bldg. Complex
<b>Divisible:</b>	600 SF - 15,840 SF
<b>Clear Height:</b>	Up to 21'
<b>Dock Doors:</b>	Yes
<b>Grade Level:</b>	Yes
<b>Power:</b>	Ample
<b>Zoning:</b>	C-3D
<b>Parking:</b>	4/1,000
<b>Lease Term:</b>	3 - 5 Years
<b>Lease Type:</b>	NNN
<b>NNN Costs:</b>	\$0.15 per SF

## Listing Comments:

Close to downtown and Boise Towne Square Mall.

Fronts I-184.

Extensive landscaping.

Abundant surface parking.

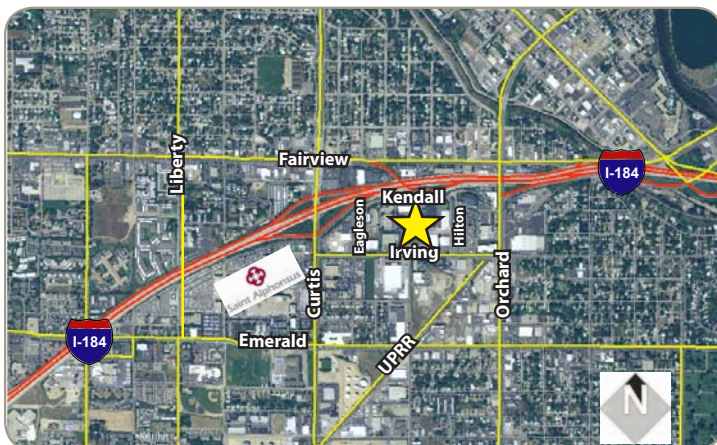
On-site property management.

Directory signage available.

## Available Space:

Multiple units available - please see following page.

**6 months free rent on a 3 year lease.  
12 months free rent on a 5 year lease.**



## Contact:

**Chris Pearson, SIOR**

Ph: 208.947.0859

Fx: 208.947.0869

chris@tokcommercial.com

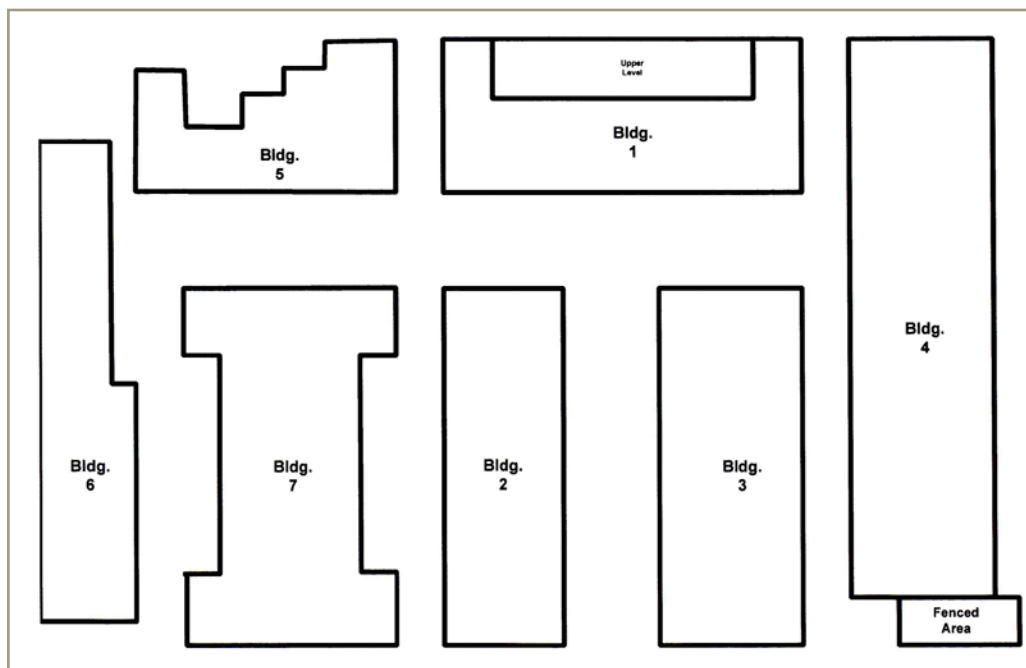
www.tokcommercial.com



## Available Space

Building	Unit	Total SF	Office SF	Whse SF	Rate/SF	Rent/Mo
2	5439	1,880	300	1,580	\$0.51	\$966.00
2	5441	2,400	1,320	1,080	\$0.67	\$1,610.00
2	5443	1,600	320	1,280	\$0.53	\$850.00
2	5445	1,600	840	760	\$0.66	\$1,060.00
2	5447	2,400	230	2,170	\$0.49	\$1,175.00
2	5451	2,400	1,560	840	\$0.71	\$1,705.00
3	5379	3,000	3,000	N/A	\$0.85	\$2,550.00
3	5381	3,000	1,140	1,860	\$0.60	\$1,810.00
4	5325	15,840	3,888	11,952	\$0.55	\$8,685.00
5	5503	715	715	0	\$0.85	\$610.00
6	5555	1,895	604	1,291	\$0.58	\$1,095.00
6	5557	1,385	410	975	\$0.57	\$790.00
6	5559	1,385	610	775	\$0.63	\$867.25
6	5563	1,640	685	955	\$0.62	\$1,012.00
6	5569	4,925	4,925	0	\$0.85	\$4,187.00
7	5513	800	800	0	\$0.85	\$680.00
7	5523	2,475	1,575	900	\$0.71	\$1,745.00
7	5527	1,895	1,895	0	\$0.85	\$1,610.00

 Lockboxes located on all vacant spaces.



This information was obtained from sources believed reliable but cannot be guaranteed. Any opinions or estimates are used for example only.