

5325 Kendall Street

Kendall Center - Boise, ID

OFFICE / WAREHOUSE SPACE FOR LEASE



Property Information:

Submarket:	Central
Available:	Immediately
Bldg Type:	CTU
Bldg Size:	Bldg 4 - 49,600 SF
Divisible:	15,840 SF
Clear Height:	21'
Dock Doors:	1
Grade Level:	1
Power:	Ample
Zoning:	C-3D
Parking:	4/1,000
Lease Term:	1 - 3 Years
Lease Type:	NNN
NNN Costs:	\$0.15 per SF

Listing Comments:

Close to downtown and Boise Towne Square Mall.

Fronts I-184.

Extensive landscaping.

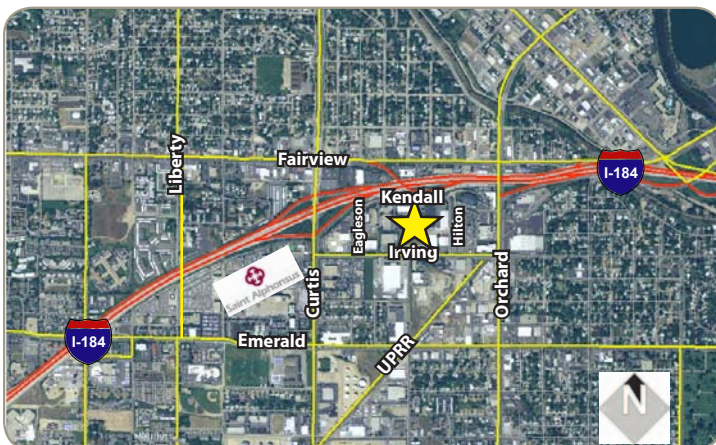
Abundant surface parking.

On-site property management.

Directory signage available.

Available Space:

SPACE:	RSF:	RATE/SF:	MONTHLY:
5325	Office 3,888 SF		
	Whse 11,952 SF		
	Total 15,840 SF	\$0.45	\$7,128.00



Contact:

Chris Pearson, SIOR

Ph: 208.947.0859

Fx: 208.947.0869

chris@tokcommercial.com

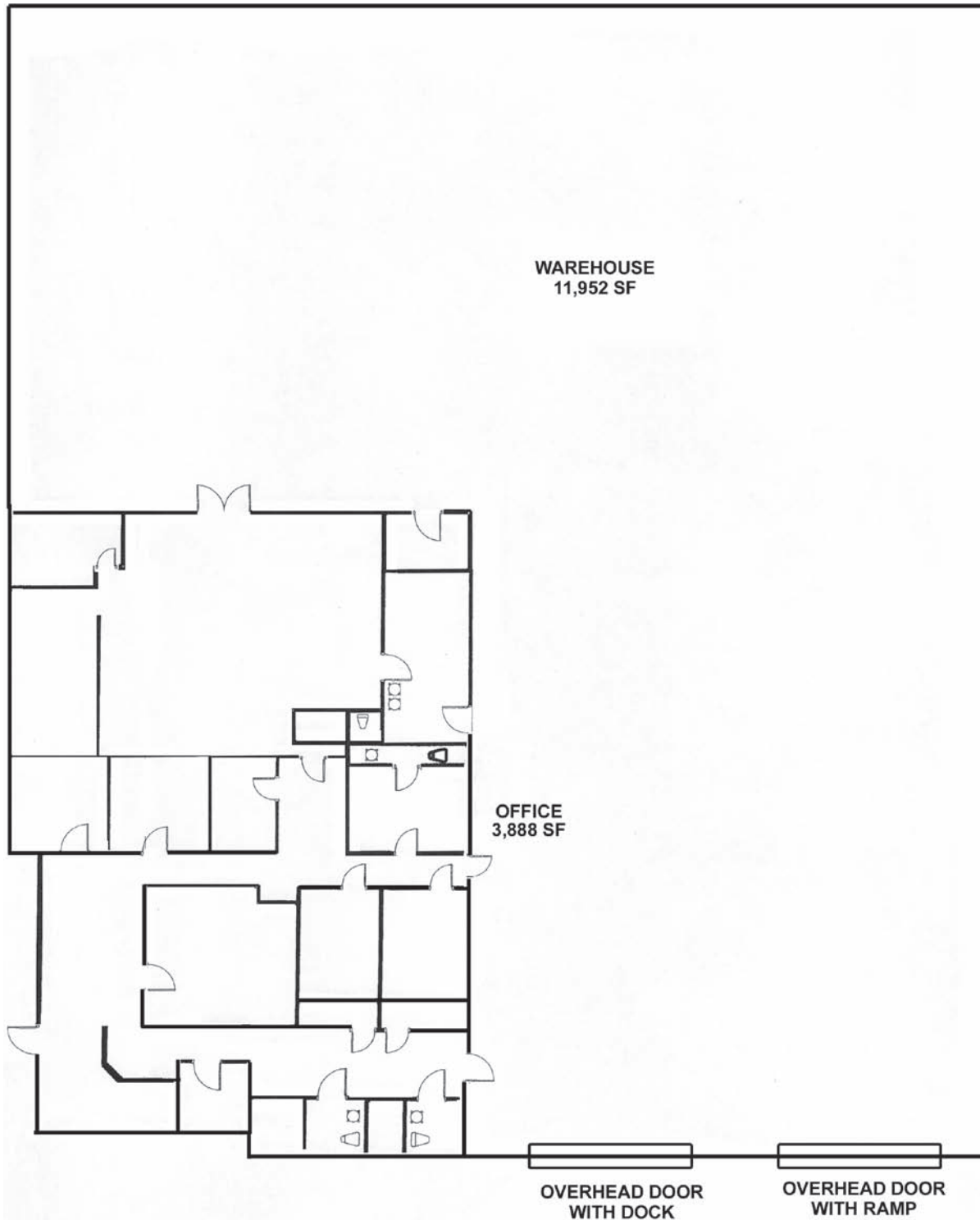
www.tokcommercial.com



(03/19/12)

This information was obtained from sources believed reliable but cannot be guaranteed. Any opinions or estimates are used for example only.

BUILDING 4 - UNIT 5325



This information was obtained from sources believed reliable but cannot be guaranteed. Any opinions or estimates are used for example only.