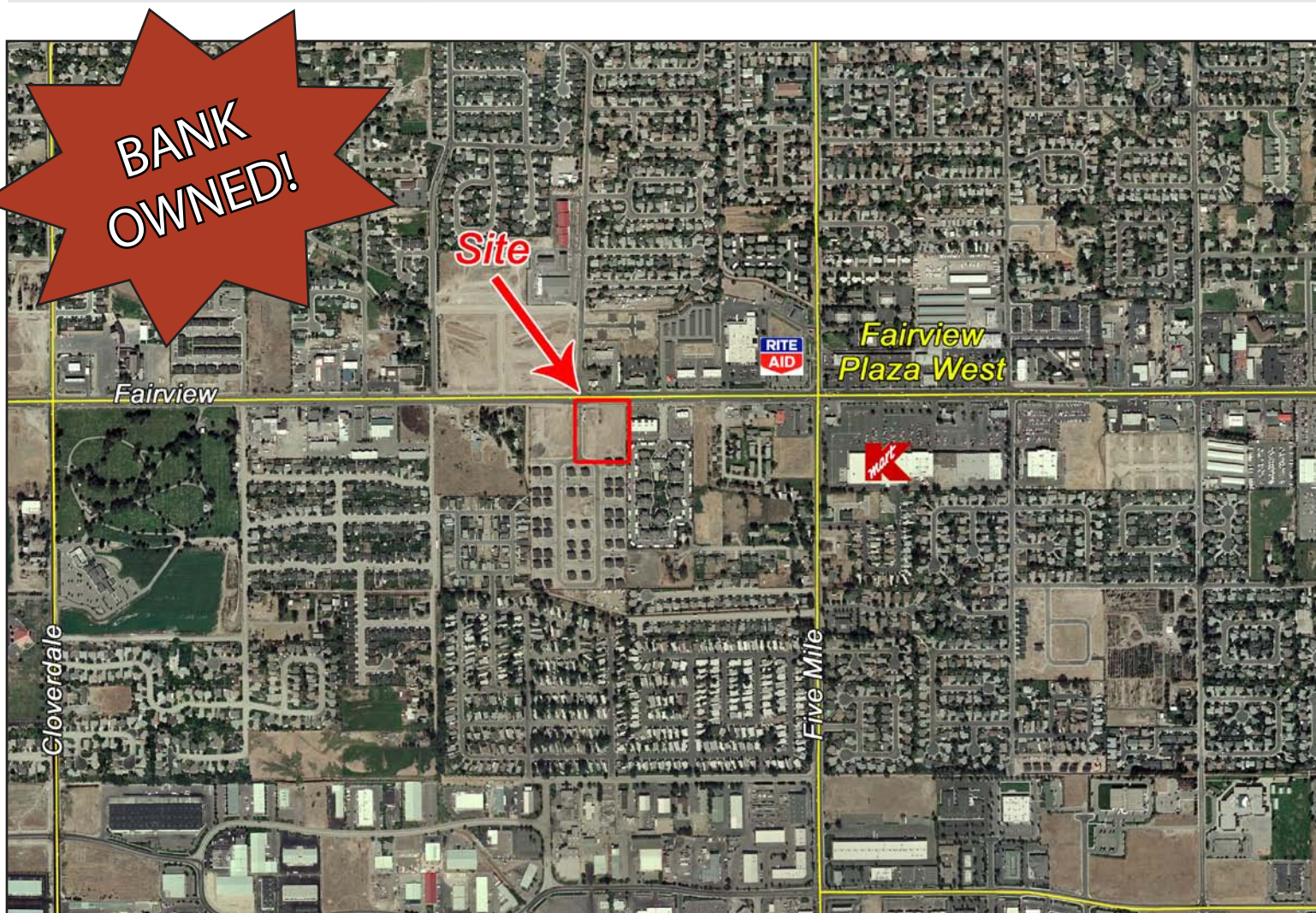


# Keeneland Park

1504-1550 Wildwood Way - Boise, ID

LAND FOR SALE



### Listing Comments:

Great Fairview location.

35,000 vehicles per day

Motivated seller!

Liberal zoning designation.

2009 Assessed value - \$729,500 or \$7.37/SF

### Available:

**Size:** 2.273 Acres  
**Price:** \$495,000 (\$5.00/SF)  
**Zoning:** C-2D

### Contact:

**Al Marino, SIOR**  
PH: 208.947.0811  
FX: 208.947.0869  
al@tokcommercial.com  
www.tokcommercial.com

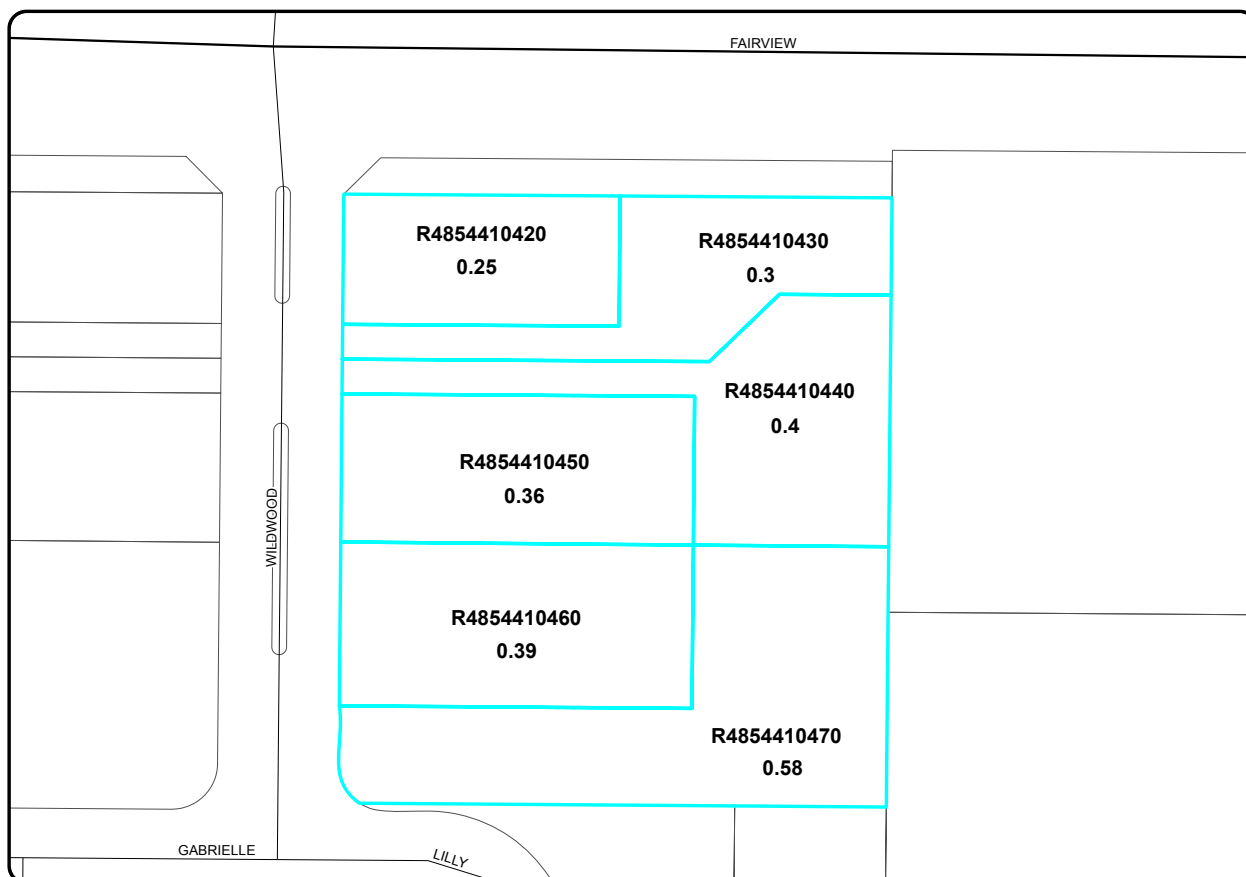
**Grove T. Hummert**  
PH: 208.947.0804  
FX: 208.947.0869  
grove@tokcommercial.com  
www.tokcommercial.com



# Keeneland Park

1504-1550 Wildwood Way - Boise, ID

**LAND FOR SALE**



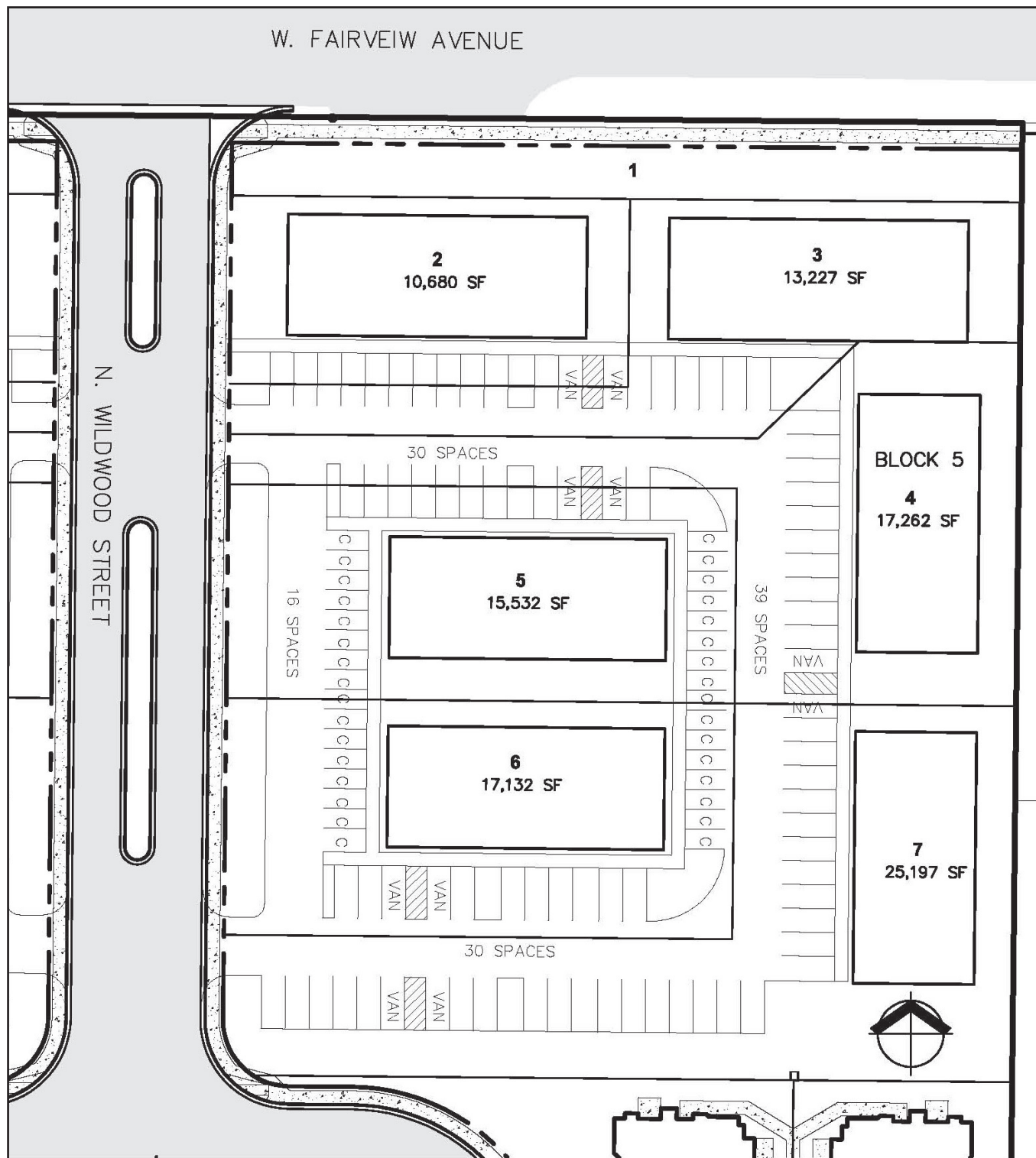
This information was obtained from sources believed reliable but cannot be guaranteed. Any opinions or estimates are used for example only.

# Keeneland Park

1504-1550 Wildwood Way - Boise, ID

LAND FOR SALE

## Subdivision Plan



This information was obtained from sources believed reliable but cannot be guaranteed. Any opinions or estimates are used for example only.