

Keeneland Park

1509 N. Wildwood Way - Boise, ID

LAND FOR SALE



Listing Comments:

Great Central Valley Location on Fairview
35,000 Vehicles Per Day
Bank Owned Property
Motivated Seller!

Available:

LOT:	SIZE:	PRICE/SF:	PRICE:
2	0.245 AC		SOLD
3	0.333 AC		SOLD
4	0.299 AC		SOLD
5	0.358 AC	\$2.50/SF	\$39,000
6	0.640 AC		SOLD
7	0.371 AC	\$1.73/SF	\$28,000

Contact:

Michael J. Ballantyne, CCIM

Ph: 208.947.0831

Fx: 208.947.0869

mjb@tokcommercial.com

www.tokcommercial.com

Lenny Nelson

Ph: 208.947.0806

Fx: 208.947.0869

lenny@tokcommercial.com

www.tokcommercial.com



(02/29/12)

This information was obtained from sources believed reliable but cannot be guaranteed. Any opinions or estimates are used for example only.

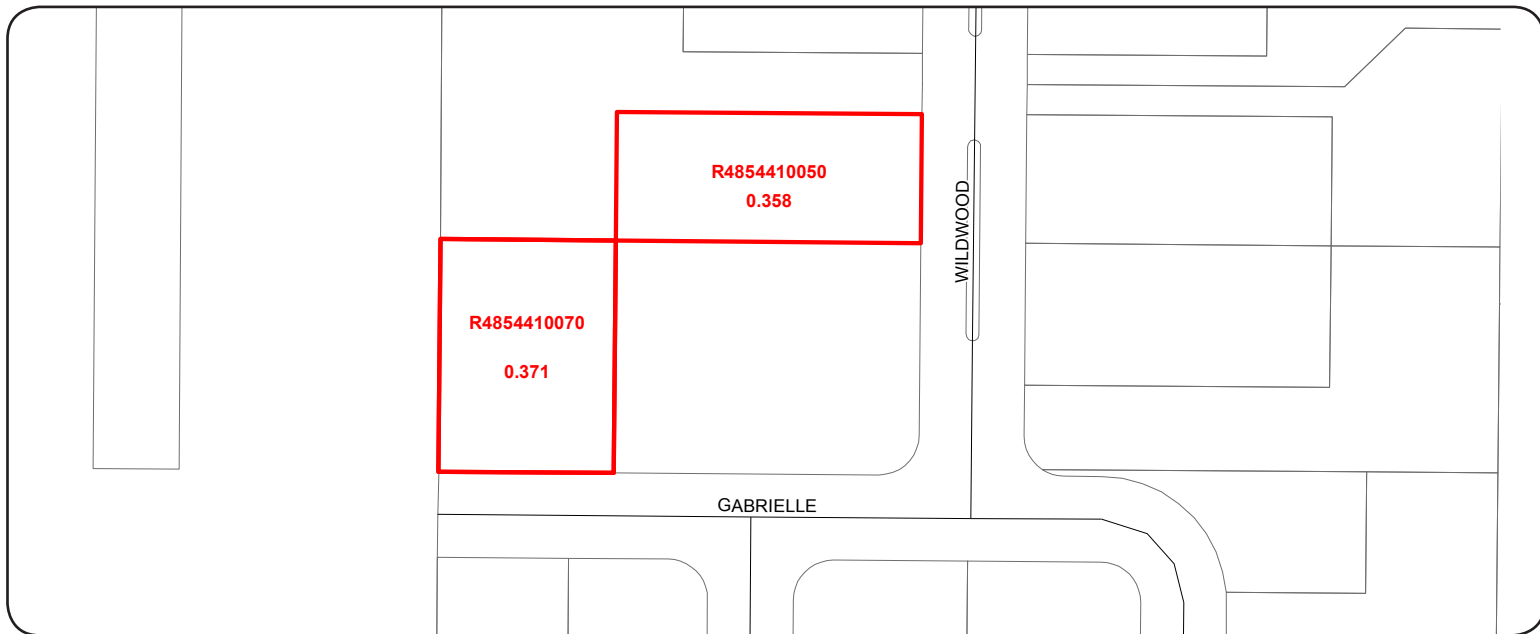
Keeneland Park

1509 N. Wildwood Way - Boise, ID

LAND FOR SALE

Parcel Information:

ASSESSED			
LOT:	VALUE	ZONING	UTILITIES
5	\$ 93,600	C-2D	To Site
7	\$ 88,900	C-2D	To Site



This information was obtained from sources believed reliable but cannot be guaranteed. Any opinions or estimates are used for example only.

