

Idaho Independent Bank

8351 W. Overland ~ Boise, ID

OFFICE SPACE FOR LEASE



Property Information:

Submarket: Southwest
Available: Immediately
Bldg Type: Office
Quality: Class A
Bldg Size: 15,025 SF
Divisible: No
Parking: 4:1000

Lease Terms:

Lease Term: 3-5 years
Lease Type: Full Service
TI Allowance: As-Is

Listing Comments:

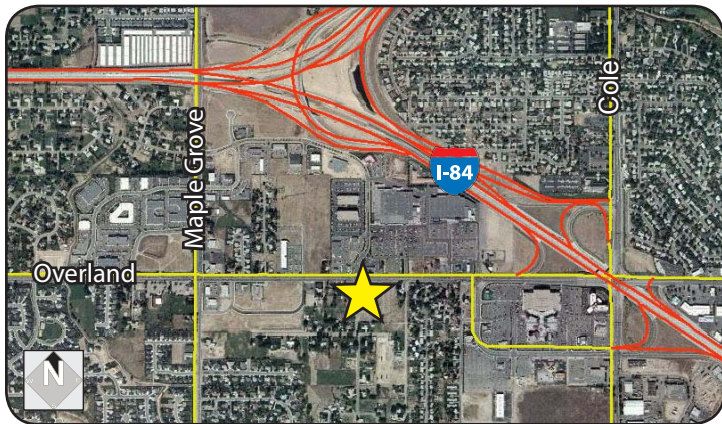
- Easy access to I-84 and I-84 Connector.
- Great frontage on Overland Road.
- Close to shopping, restaurants, lodging and services.
- Built-out and ready for immediate occupancy.

Available Space:

SPACE:	RSF:	RATE:
Second Floor	4,806 SF	\$16.50/SF

Space Features:

- 6 offices
- Work room
- Conference room



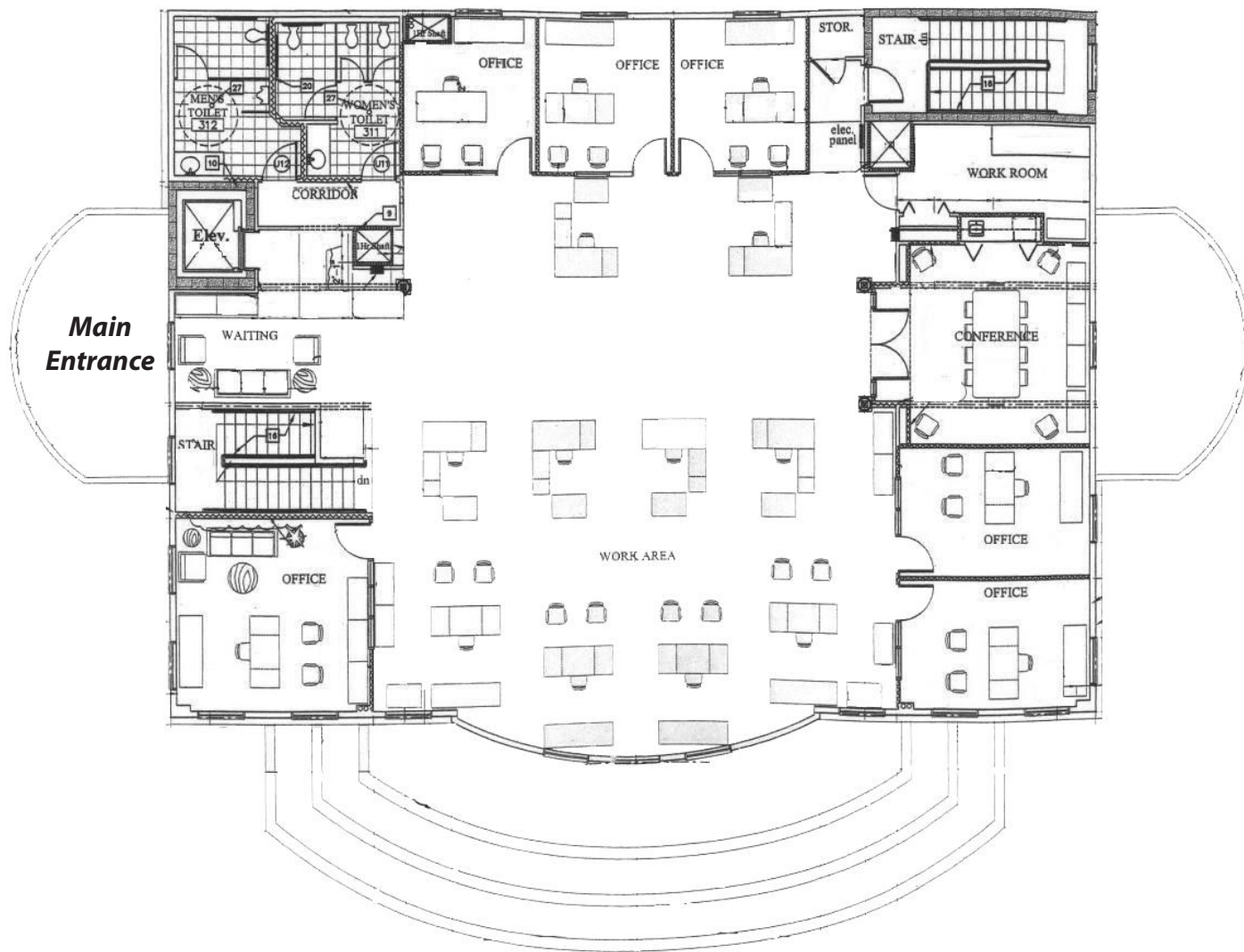
Contact:

Mark Cleverley
 Ph: 208.947.5507
 Fx: 208.947.0869
 markc@tokcommercial.com
 www.tokcommercial.com

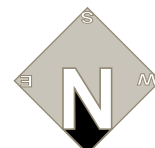
(10/20/11)

This information was obtained from sources believed reliable but cannot be guaranteed. Any opinions or estimates are used for example only.

Second Floor



Overland Road



This information was obtained from sources believed reliable but cannot be guaranteed. Any opinions or estimates are used for example only.