

Heritage Commons

1565 E Leigh Field Dr - Meridian, ID
OFFICE CONDO FOR SALE



Property Information:

Submarket: Meridian
Available: Immediately
Zoning: R8 with PUD
Quality: Class A
Bldg Size: 5,100 SF
Divisible: Yes
of Floors: 1
Parking: 4:1000

Listing Comments:

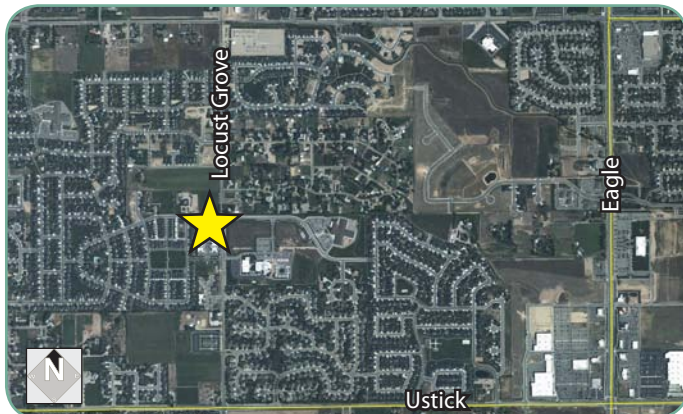
Excellent location in Meridian on Locust Grove.

Unique architecture, excellent construction quality.

Office park is incorporated into a large master planned development with residential, schools and retail nearby.

Close proximity to a variety of amenities on Eagle Rd. Ustick Rd.

A Development By:



Available Space:

Suite:	RSF:	Rate:
Suite 175	1,039 SF	\$90.00/SF (shell)

Price includes existing common area.

Contact:

Mike Greene, CCIM

Ph: 208.947.0835

Fx: 208.947.0869

mikeg@tokcommercial.com

www.tokcommercial.com

Scott Raeber, CCIM

Ph: 208.947.0802

Fx: 208.947.0869

scott@tokcommercial.com

www.tokcommercial.com

Peter Oliver, SIOR, CCIM

Ph: 208.947.0816

Fx: 208.947.0869

peter@tokcommercial.com

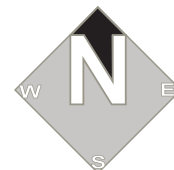
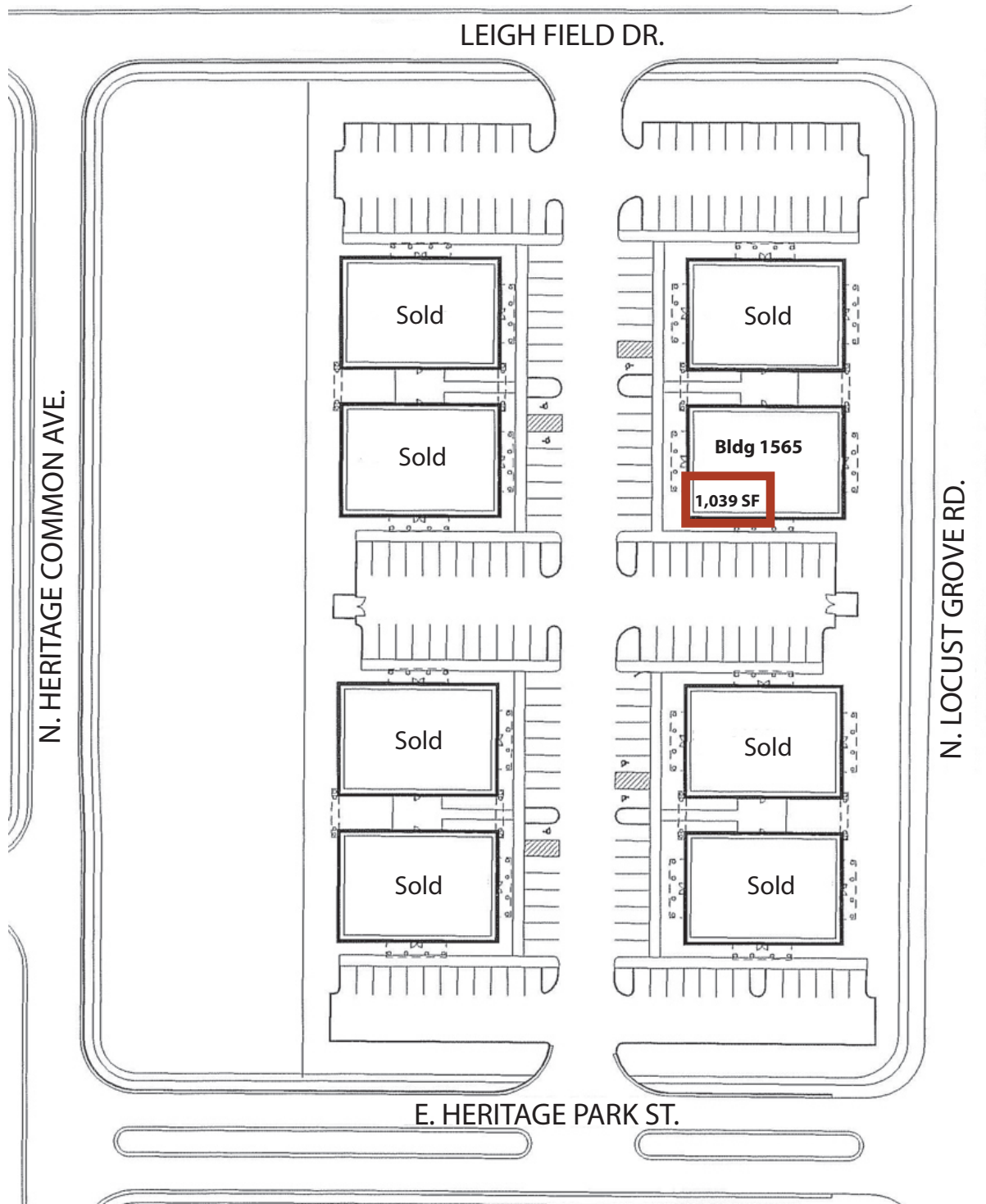
www.tokcommercial.com

Heritage Commons

1565 E Leigh Field Dr - Meridian, ID

OFFICE CONDO FOR SALE

Site Plan



This information was obtained from sources believed reliable but cannot be guaranteed. Any opinions or estimates are used for example only.

Heritage Commons

1565 E Leigh Field Dr - Meridian, ID

OFFICE CONDO FOR SALE

Building 1565 Suite 175



This information was obtained from sources believed reliable but cannot be guaranteed. Any opinions or estimates are used for example only.