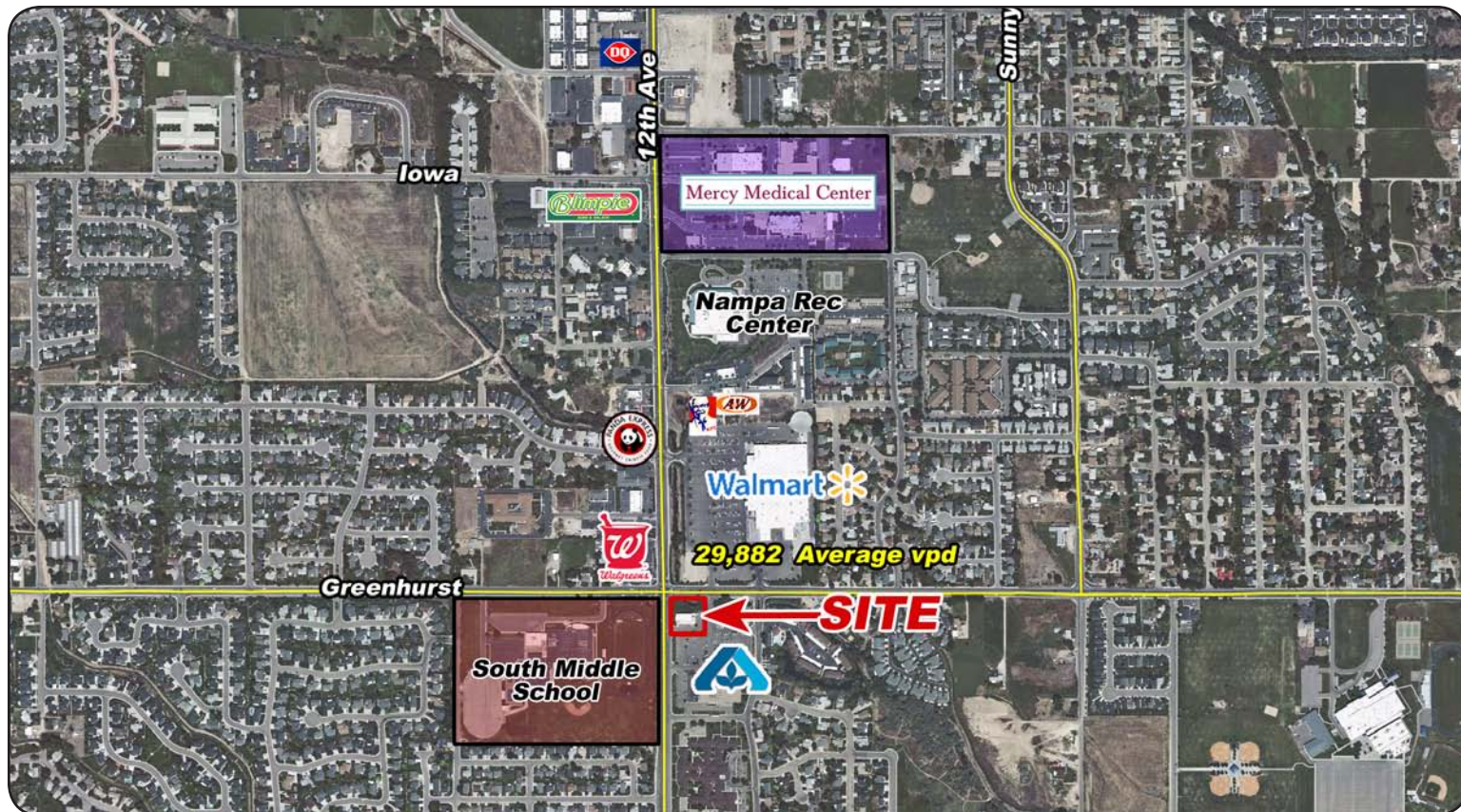


# Greenhurst Shops

2310 /2312 12th Avenue - Nampa, ID  
**RETAIL SPACE FOR LEASE**



### Listing Comments:

Highly visible south Nampa location.

Excellent location near Albertson's, Wal-Mart and more!

High growth residential area.

NNN expenses estimated at \$5.00/SF.



### Available Space:

SPACE:	RSF:	RATE/NNN:
2310 - Former Restaurant	3,500 SF	\$19.00

### Demographics:

**Population:** 64,089 (3 mi.)  
**HH Income:** \$60,202 (3 mi.)  
 2010

### Contact:

**Mark Schalg, CCIM**  
 Ph: 208.947.0817  
 Fx: 208.947.0869  
 marks@tokcommercial.com  
 www.tokcommercial.com



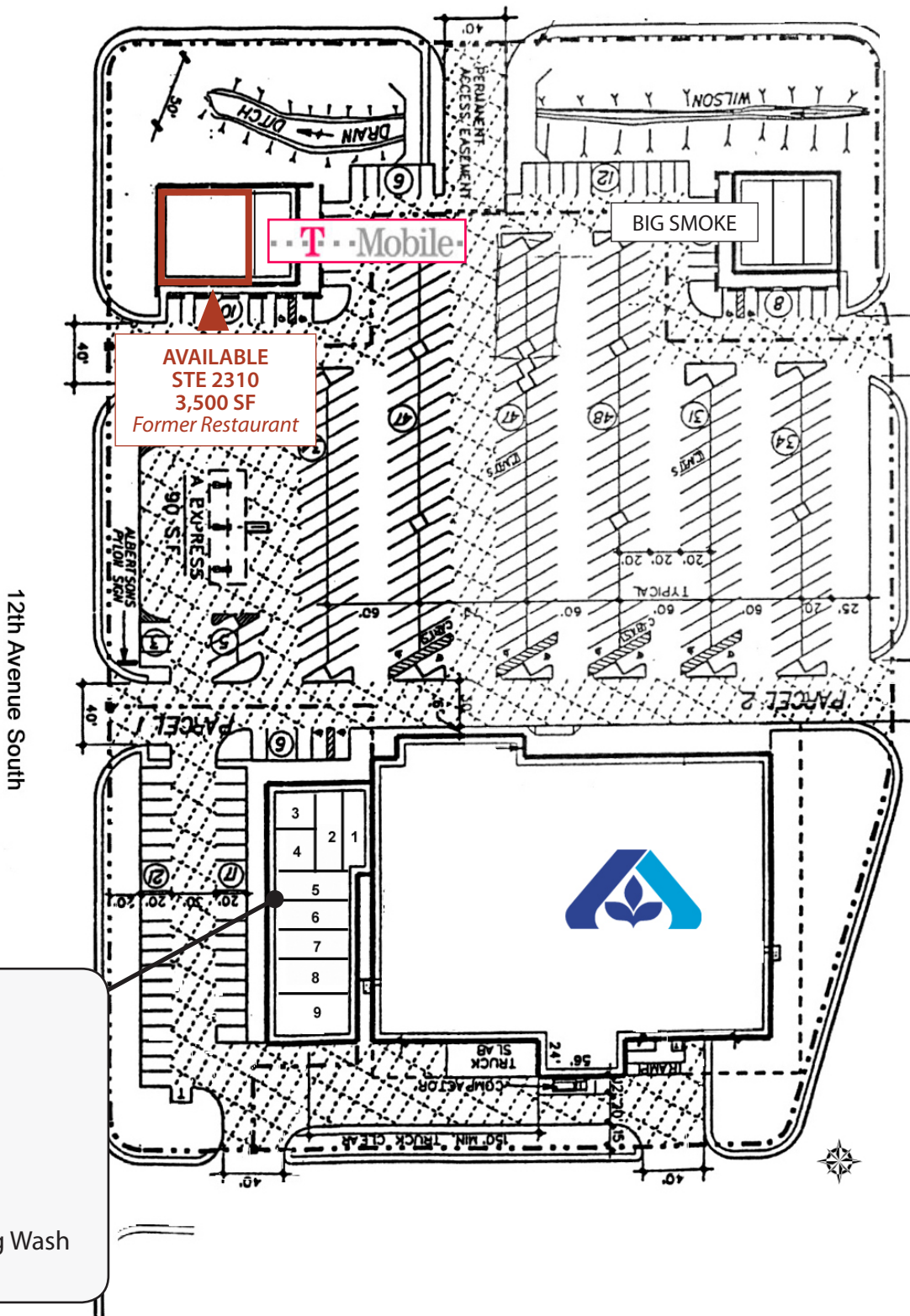
(11/04/11)

This information was obtained from sources believed reliable but cannot be guaranteed. Any opinions or estimates are used for example only.

# Greenhurst Shops

2310 /2312 12th Avenue - Nampa, ID

**RETAIL SPACE FOR LEASE**



**AVAILABLE  
 STE 2310  
 3,500 SF  
 Former Restaurant**

- 1. Cost Cutters
- 2. Moxie Java
- 3. Vacant
- 4. Vacant
- 5. Yogurt Court
- 6. Lucky Star Nail
- 7. Papa Murphy's
- 8. Rub-a-dub Dog Wash
- 9. The UPS STORE

This information was obtained from sources believed reliable but cannot be guaranteed. Any opinions or estimates are used for example only.