

Federal Way Industrial Land

Federal Way South of Gowen Road - Boise, ID
DEVELOPMENT LAND FOR SALE



Contact:

Chris Pearson, SIOR

Ph: 208.947.0859

Fx: 208.947.0869

chris@tokcommercial.com

www.tokcommercial.com

Scott Raeber, CCIM

Ph: 208.947.0802

Fx: 208.947.0869

scott@tokcommercial.com

www.tokcommercial.com

Peter Oliver, SIOR, CCIM

Ph: 208.947.0816

Fx: 208.947.0869

peter@tokcommercial.com

www.tokcommercial.com

A Development By:



Available:

Size:

13.97 Acres

Price:

\$3.90/SF

Zoning:

M-1

Utilities:

To site

Development Capacity:

Up to 170,000 SF (6 bldgs.)

Parcel No.:

S1607233650

Listing Comments:

Over 1,400' of Interstate 84 frontage.

Located between Micron and I-84 and convenient to either Gowen or Eisenman Interchanges.

Within one mile of retail, restaurants and hotels.

Conceptual plans available and included in price.

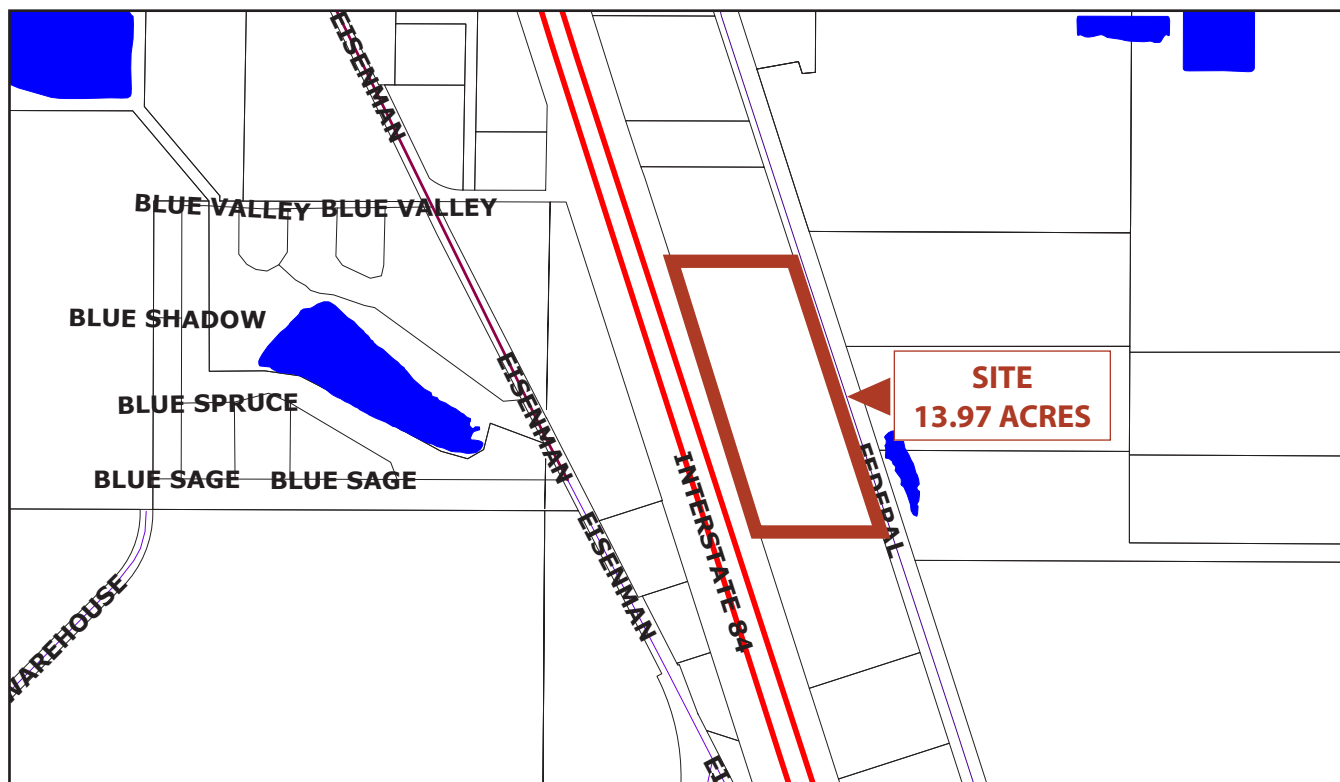
Preliminary plat is complete.

(06/17/11)

This information was obtained from sources believed reliable but cannot be guaranteed. Any opinions or estimates are used for example only.

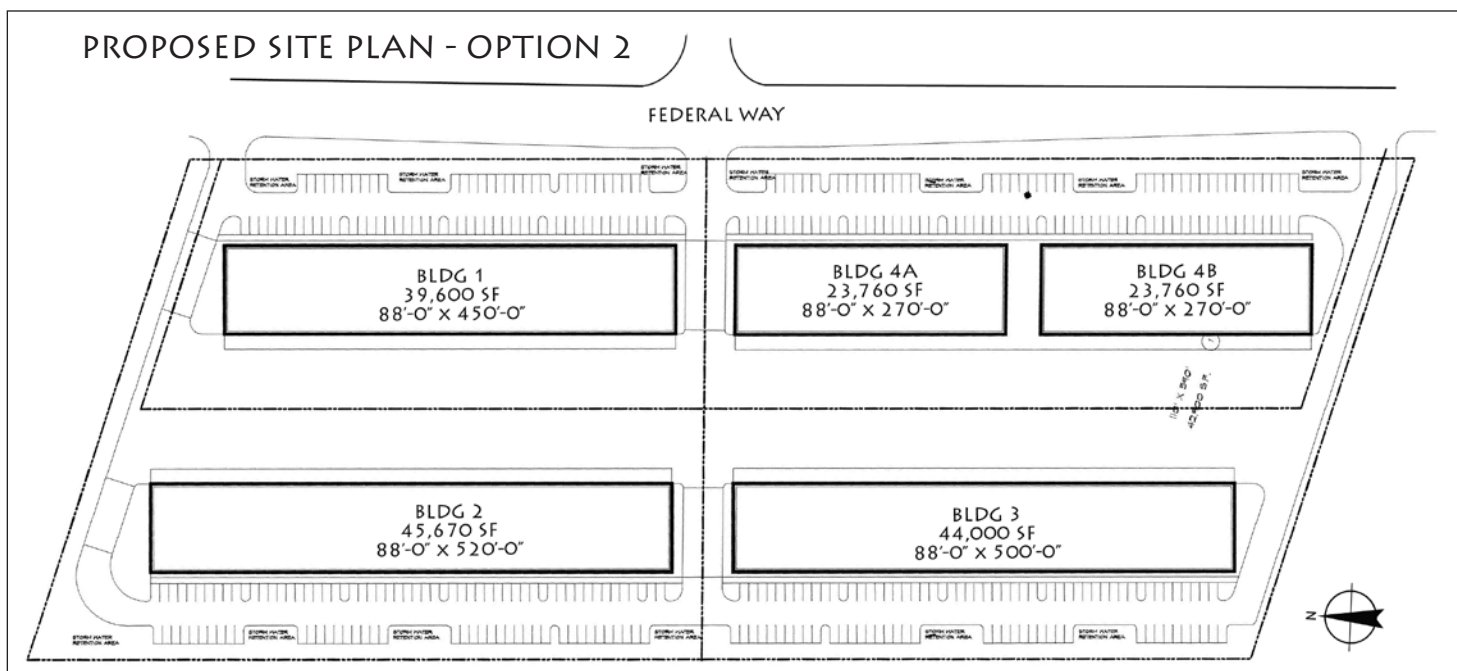
Federal Way Industrial Land

Federal Way South of Gowen Road - Boise, ID
DEVELOPMENT LAND FOR SALE



EAST ELEVATION - CONCEPTUAL

PROPOSED SITE PLAN - OPTION 2



This information was obtained from sources believed reliable but cannot be guaranteed. Any opinions or estimates are used for example only.