

Featherly Warehouse

2902 Featherly Way - Boise, ID
INDUSTRIAL SPACE FOR LEASE



Property Information:

Submarket:	Southwest
Available:	Immediately
Bldg Type:	Flex
Bldg Size:	8,728 SF
Divisible:	No
Clear Height:	16'
Grade Level:	2 - 14' x 10' doors
Power:	200 Amp/220V/3 Phase
Zoning:	M-1
Parking:	4:1000
Lease Term:	1 -5 years
Lease Type:	Gross
TI's:	Available

Listing Comments:

Excellent location in Victory Business Park off Victory Road between Maple Grove and Cole Road.

I-84 access from Cole Road or Orchard Street.

Close proximity to Boise Airport.

2 grade level doors.

Office area can be built to suit tenant's needs.

Gas space heater.

Two restrooms.

Available Space:

SPACE:	RSF:	RATE/SF:	RENT/Mo.
2902	4,692 SF	\$0.55	\$2,580



Contact:

Chris Pearson, SIOR

Ph: 208.947.0859
Fx: 208.947.0869
chris@tokcommercial.com
www.tokcommercial.com

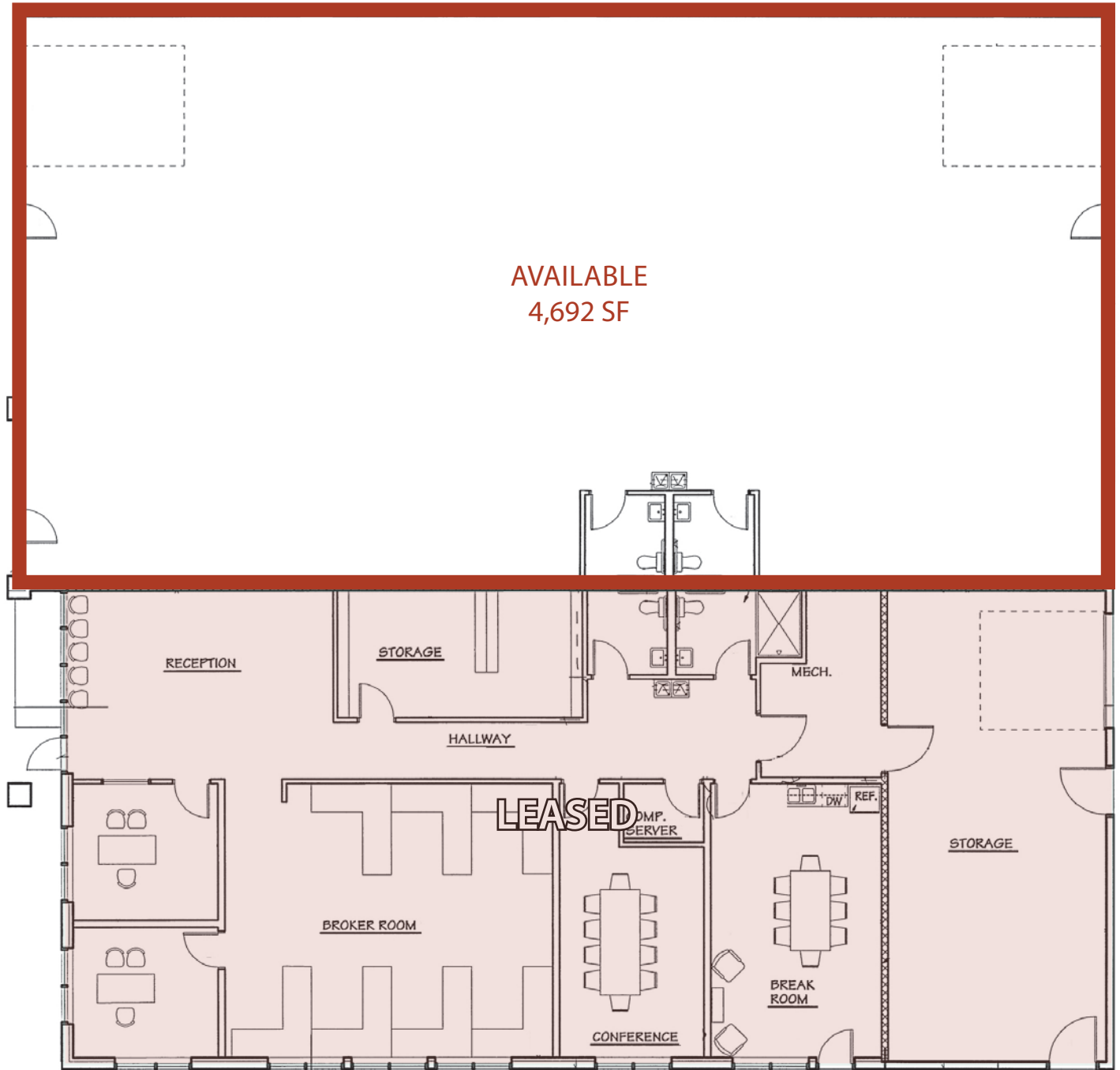
Gavin Phillips

Ph: 208.947.0812
Fx: 208.947.0869
gavin@tokcommercial.com
www.tokcommercial.com



Featherly Warehouse

2902 Featherly Way - Boise, ID
INDUSTRIAL SPACE FOR LEASE



This information was obtained from sources believed reliable but cannot be guaranteed. Any opinions or estimates are used for example only.

Featherly Warehouse

2902 Featherly Way - Boise, ID
INDUSTRIAL SPACE FOR LEASE



This information was obtained from sources believed reliable but cannot be guaranteed. Any opinions or estimates are used for example only.