

Emerald West Plaza

8660 W Emerald - Boise, ID
OFFICE SPACE FOR LEASE



Property Information:

Submarket: West
Available: Immediately
Bldg Type: Office
Quality: Class A
Bldg Size: 20,506 SF
Divisible: Yes
of Floors: 1
Parking: 4.2:1000

Lease Terms:

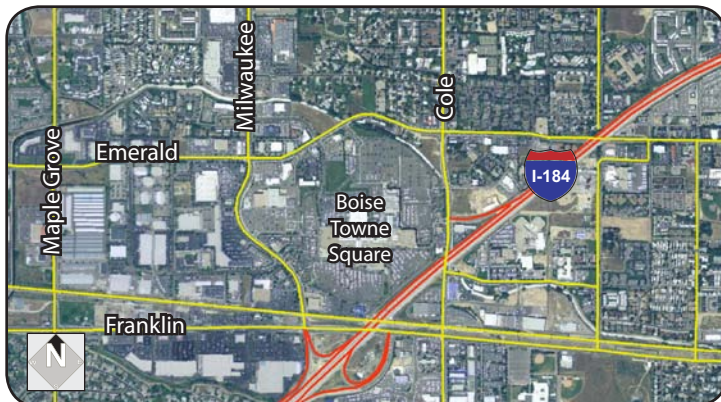
Lease Term: 3-5 years
Lease Type: Full Service
TI Allowance: Negotiable

Listing Comments:

Located in the growing West Boise/Emerald Corridor.
 Excellent location offering high traffic exposure.
 Close to I-184, banks, restaurants and regional shopping centers.
 Attractive brick & stucco construction.

Available Space:

SPACE:	RSF:	RATE:
Suite 112 / 186	3,596	\$11.00/SF



Contact:

Grove T. Hummert
 Ph: 208.947.0804
 Fx: 208.947.0869
 grove@tokcommercial.com
 www.tokcommercial.com

Patrick Shalz, SIOR
 Ph: 208.947.0834
 Fx: 208.947.0869
 pat@tokcommercial.com
 www.tokcommercial.com

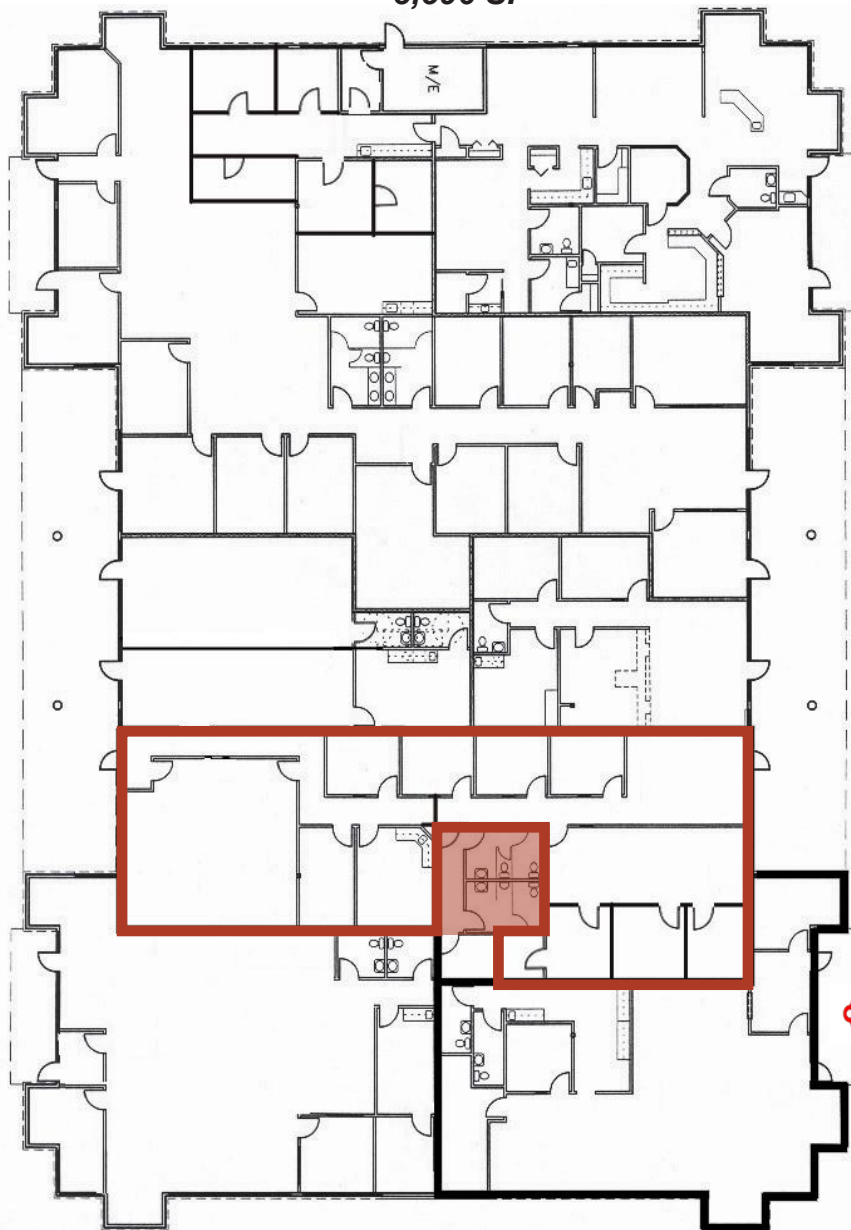


Emerald West Plaza

8660 W Emerald - Boise, ID

OFFICE SPACE FOR LEASE

Suite 112 / 186
3,596 SF



**Call for Lockbox
Combination**

Emerald Street



This information was obtained from sources believed reliable but cannot be guaranteed. Any opinions or estimates are used for example only.