

El Dorado Marketplace

2952 E. East Overland - Meridian, ID

RETAIL SPACE FOR LEASE



Demographics:

Population: 56,094 (3 mi.)
HH Income: \$86,311 (3 mi.)
2009

Key Tenants:

Me Time Coffee, Bairds Dry Cleaners, Ideal Image, Don Diego's Mexican Restaurant and NOW OPEN . . . **Joy Garden Chinese Restaurant & Jimmy John's!**

Listing Comments:

Directly off of the I-84 - Eagle Road interchange.

Great South Meridian location!

Serves over 300 acres of business parks and over 400 hotel rooms!

Near the new Mountain View High School.

Available Space:

SPACE:	RSF:	RATE:
Ste 105	1,472 SF	\$17.95
Ste 130	1,453 SF	\$17.95
Ste 170	2,240 SF	\$16.95



Contact:

Bob Mitchell, CSM

Ph: 208.947.0836

Fx: 208.947.0869

bob@tokcommercial.com

www.tokcommercial.com



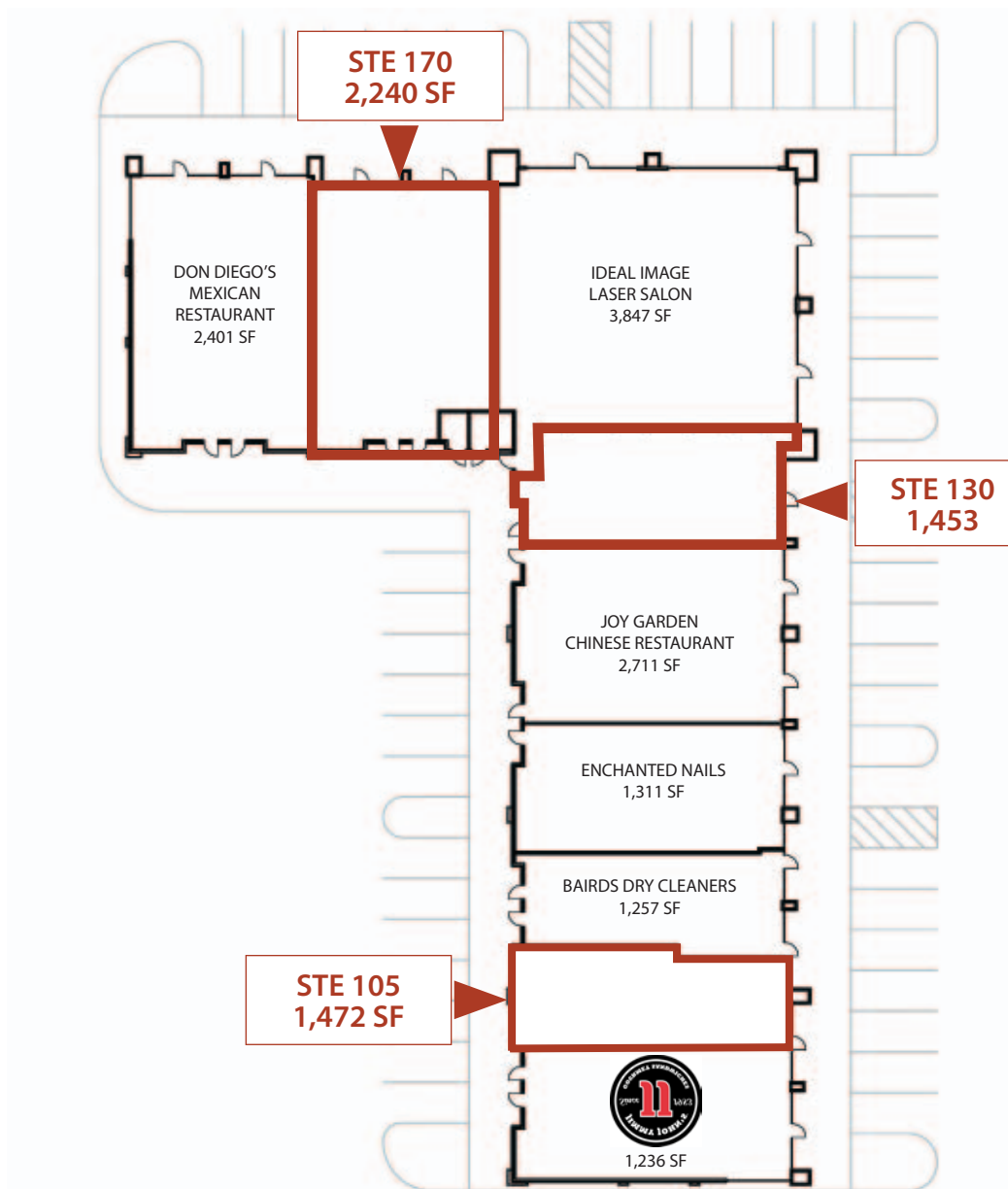
(08/30/11)

This information was obtained from sources believed reliable but cannot be guaranteed. Any opinions or estimates are used for example only.

El Dorado Marketplace

2952 E. East Overland - Meridian, ID

RETAIL SPACE FOR LEASE



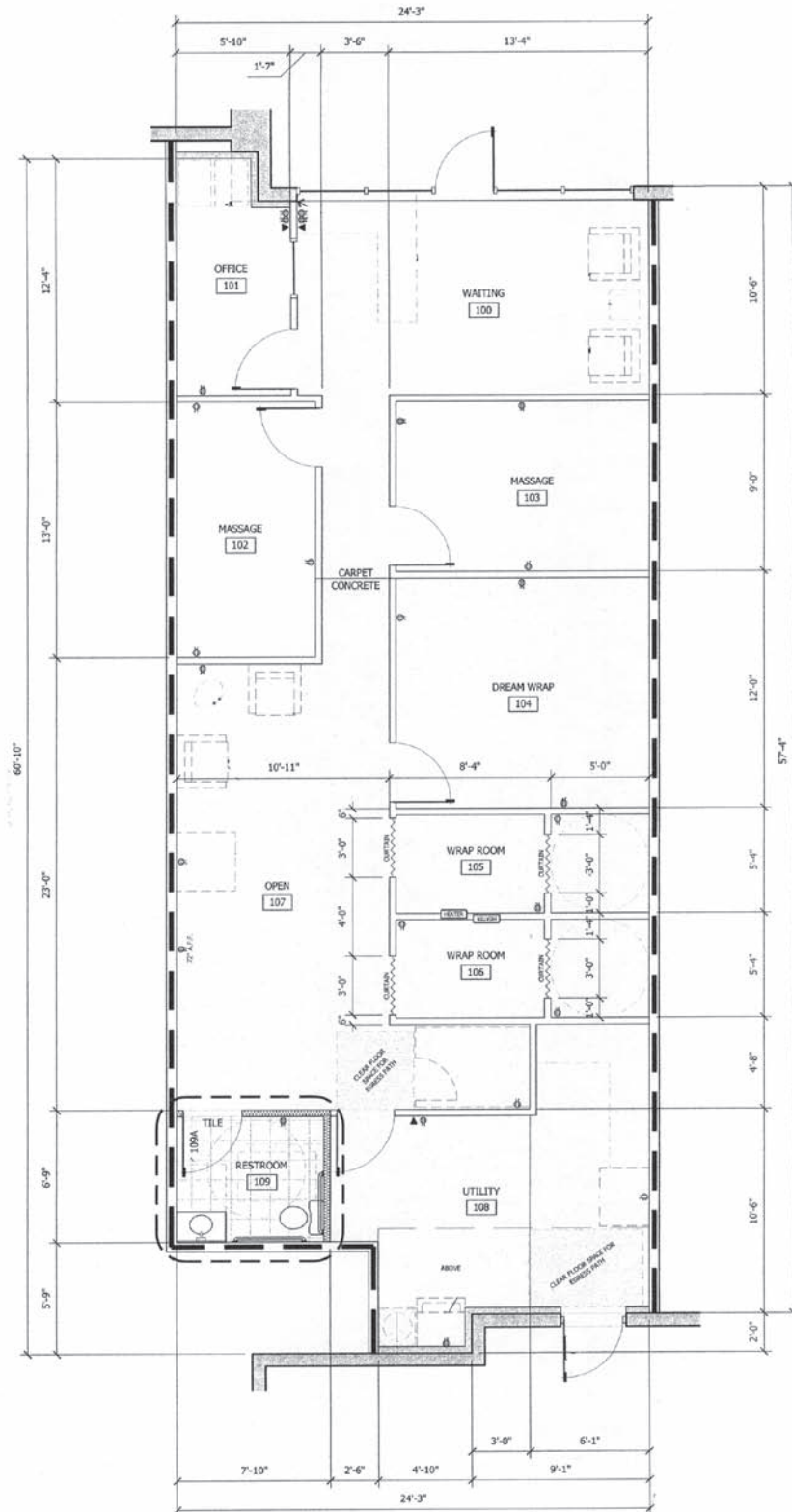
This information was obtained from sources believed reliable but cannot be guaranteed. Any opinions or estimates are used for example only.

El Dorado Marketplace

2952 E. East Overland - Meridian, ID

RETAIL SPACE FOR LEASE

SUITE 130
1,453 SF

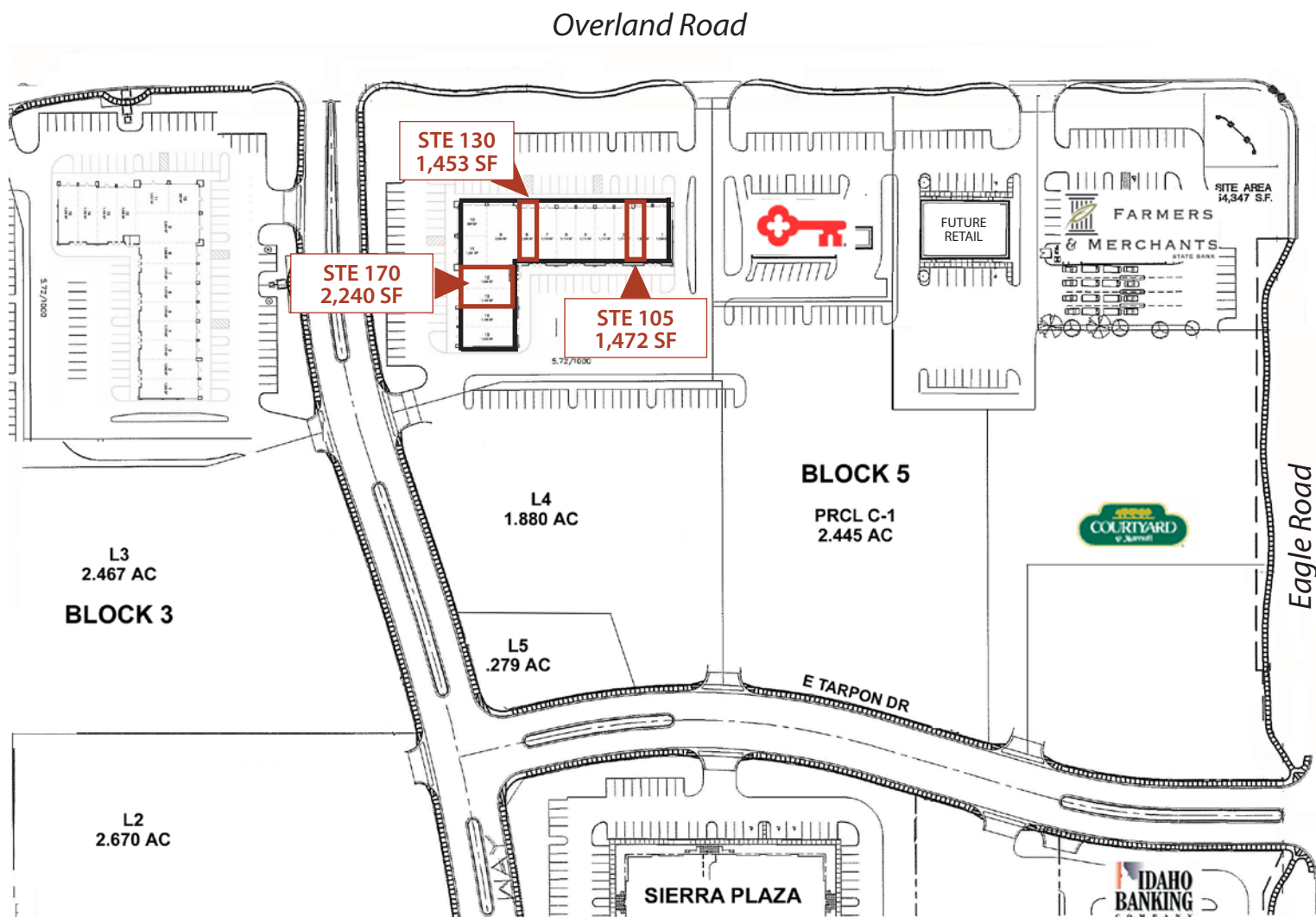


This information was obtained from sources believed reliable but cannot be guaranteed. Any opinions or estimates are used for example only.

El Dorado Marketplace

2952 E. East Overland - Meridian, ID

RETAIL SPACE FOR LEASE



This information was obtained from sources believed reliable but cannot be guaranteed. Any opinions or estimates are used for example only.