

# Eagle View Plaza

West Vet Sublease - Meridian, ID

VETERINARIAN/MEDICAL OFFICE SPACE FOR SUBLEASE



## Property Information:

<b>Submarket:</b>	Meridian
<b>Available:</b>	Immediately
<b>Bldg Type:</b>	Office / Retail
<b>Quality:</b>	Class A
<b>Suite Size:</b>	4,336 SF
<b>Divisible:</b>	No
<b># of Floors:</b>	1
<b>Parking:</b>	6/1000

## SubLease Terms:

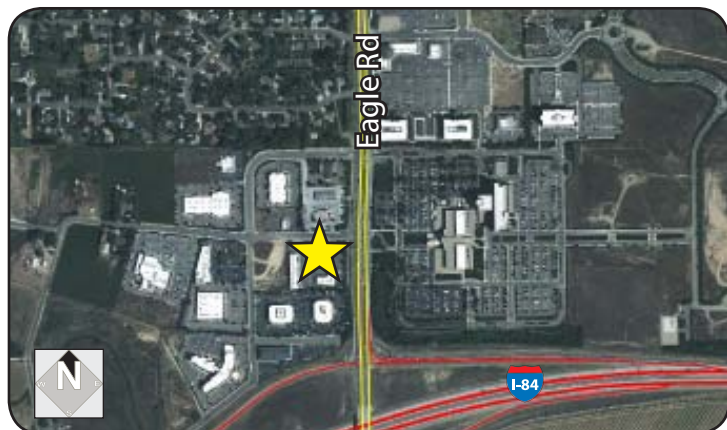
<b>SubLease Term:</b>	Thru March 2017
<b>Sublease Type</b>	FLSVEJ
<b>TI Allowance:</b>	As Is

## Listing Comments:

- Brand new building on Eagle Road and I-84 in Meridian.
- Fully built-out veterinary clinic.
- Prominent pylon, monument, and building signage available.
- Space can convert to professional medical offices.
- Exam rooms with plumbing.
- Lab and x-ray rooms.
- Surgery and treatment areas.
- Contact agent for additional term details.

## Available Space:

SPACE:	RSF:	RATE:
Suite	4,336 SF	\$15.00/SF



## Contact:

**Greg Gaddis**

Ph: 208.947.0827

Fx: 208.947.0869

greg@tokcommercial.com

www.tokcommercial.com

(12/27/11)

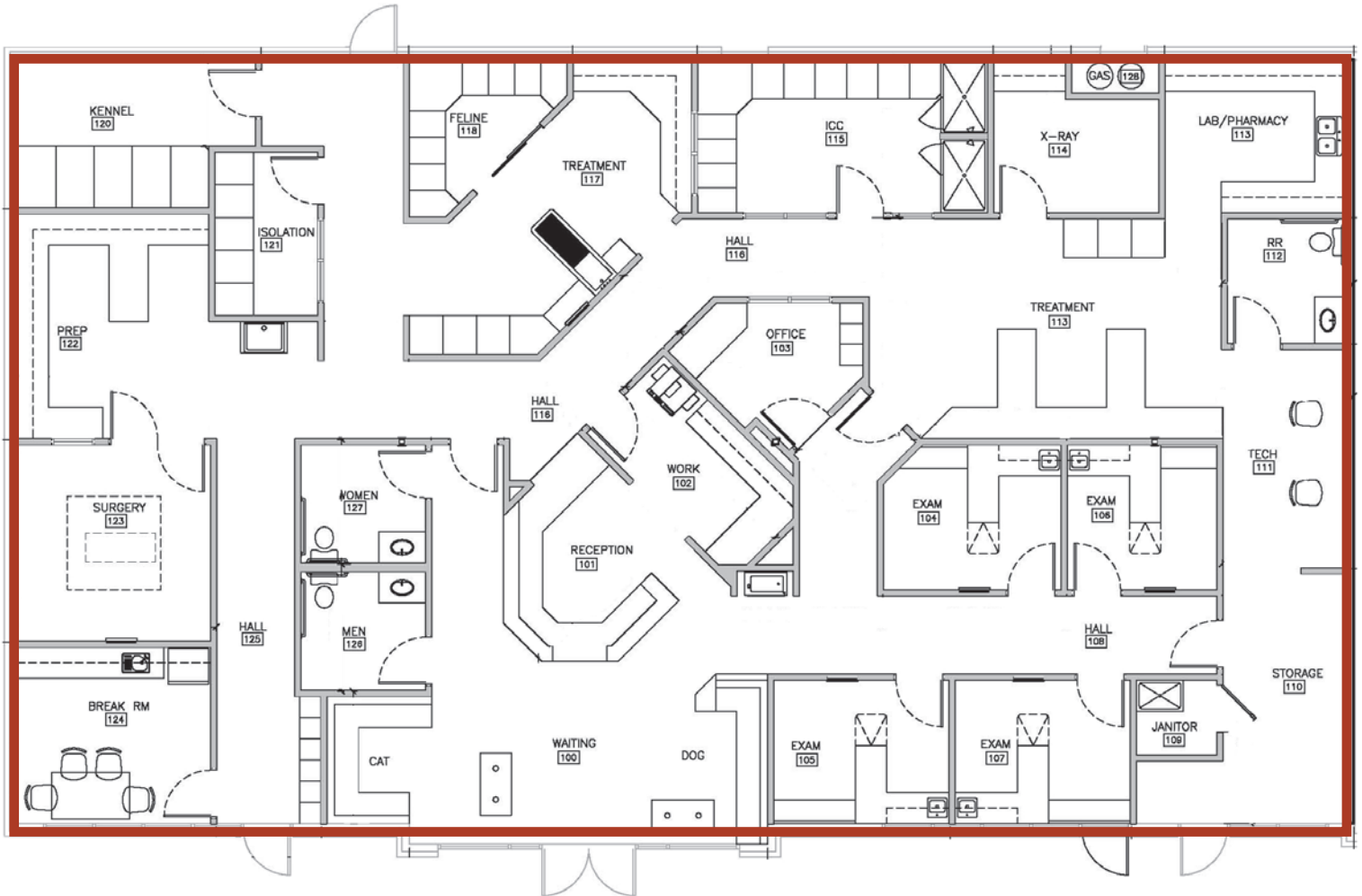
This information was obtained from sources believed reliable but cannot be guaranteed. Any opinions or estimates are used for example only.

# Eagle View Plaza

West Vet Sublease - Meridian, ID

VETERINARIAN/MEDICAL OFFICE SPACE FOR SUBLEASE

Floor Plan  
4,336 SF



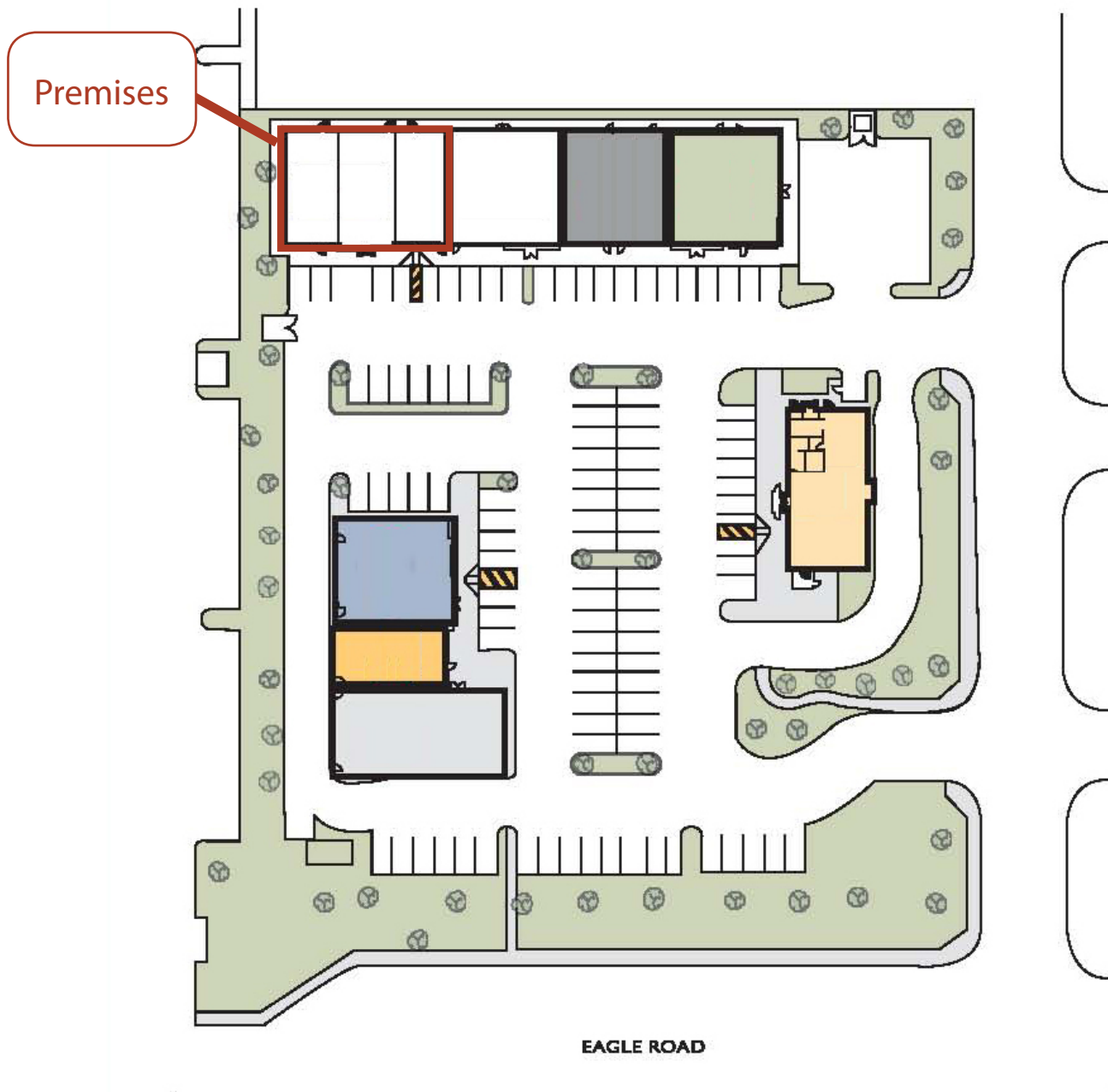
This information was obtained from sources believed reliable but cannot be guaranteed. Any opinions or estimates are used for example only.

# Eagle View Plaza

West Vet Sublease - Meridian, ID

VETERINARIAN/MEDICAL OFFICE SPACE FOR SUBLEASE

Site Plan



This information was obtained from sources believed reliable but cannot be guaranteed. Any opinions or estimates are used for example only.