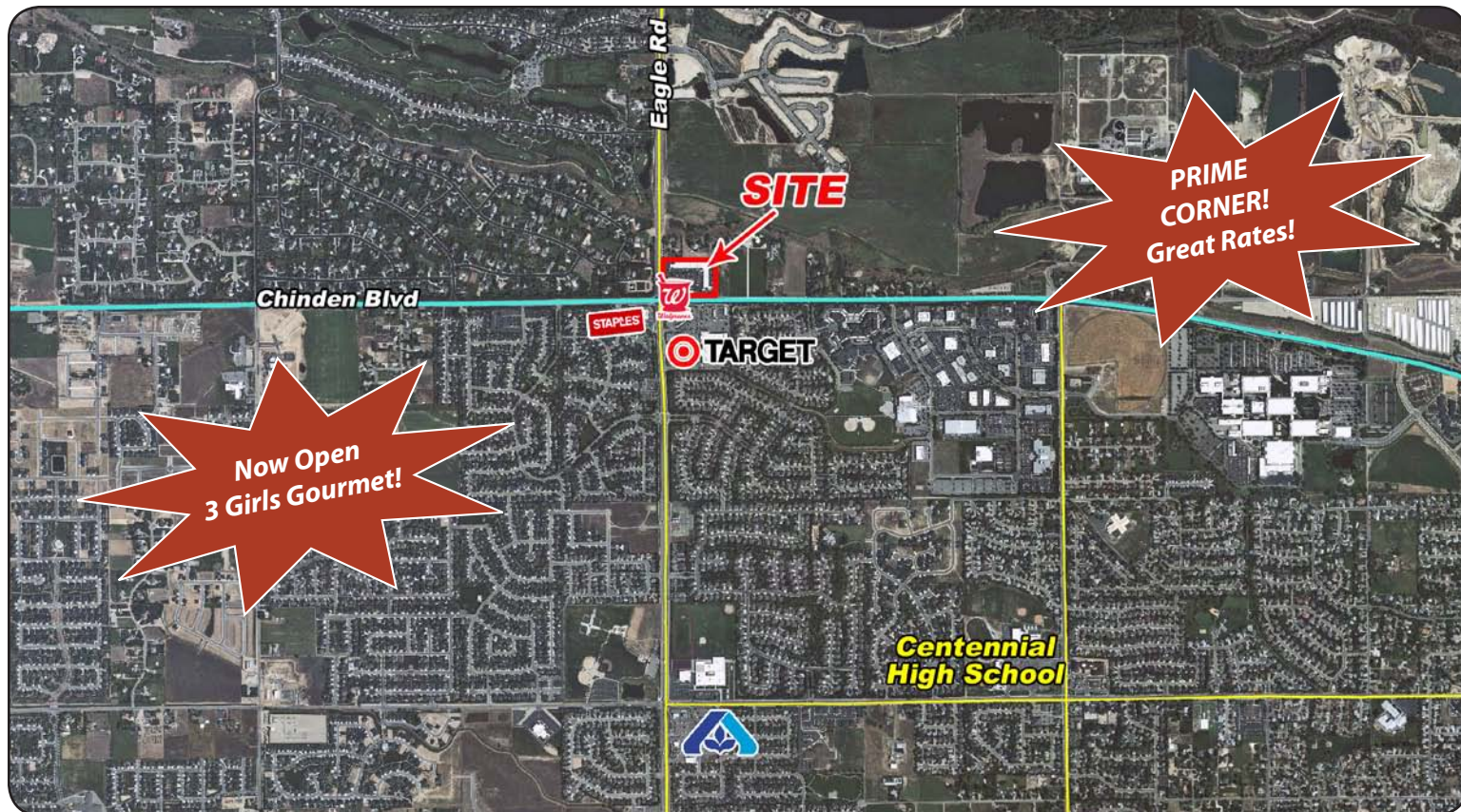


# Eagle Marketplace

NEC Chinden Blvd & Eagle Rd - Eagle, ID  
**RETAIL SPACE FOR LEASE**



### Demographics:

**Population:** 65,024 (3 mi.)  
**HH Income:** \$90,034 (3 mi.)  
 2010

### Listing Comments:

Upscale retail center.

Over 65,000 cars per day.

Shadow anchored by Target.

Serves West Boise, Meridian and Eagle.

### Contact:

**Bob Mitchell, CSM**  
 Ph: 208.947.0836  
 Fx: 208.947.0869  
 bob@tokcommercial.com  
 www.tokcommercial.com



### Available Space:

SPACE:	RSF:	RATE:
Ste 105	2,800 SF	\$10.95
Ste 107 - Former chiropractor	1,400 SF	\$11.95
Ste 113 - Former day spa	3,500 SF	\$11.95
Ste 115	1,400 SF	\$11.95
Ste 119	1,295 SF	\$11.95
Ste 126 - Former coffee bar	1,304 SF	\$11.95
Ste 128	1,400 SF	\$11.95
Ste 133	1,400 SF	\$11.95
Ste 134	2,800 SF	\$10.95
Ste 135	1,315 SF	\$11.95

### Key Tenants:

Fitness 19, Walgreens, Sakura Sushi, Living Green, Idaho Furniture Exchange.

# Eagle Marketplace

NEC Chinden Blvd & Eagle Rd - Eagle, ID  
RETAIL SPACE FOR LEASE

## Property Information:

**Available:** Immediately  
**Bldg Size:** 65,173 SF  
**Space Sizes:** 1,295 SF to 6,500 SF

## Lease Terms:

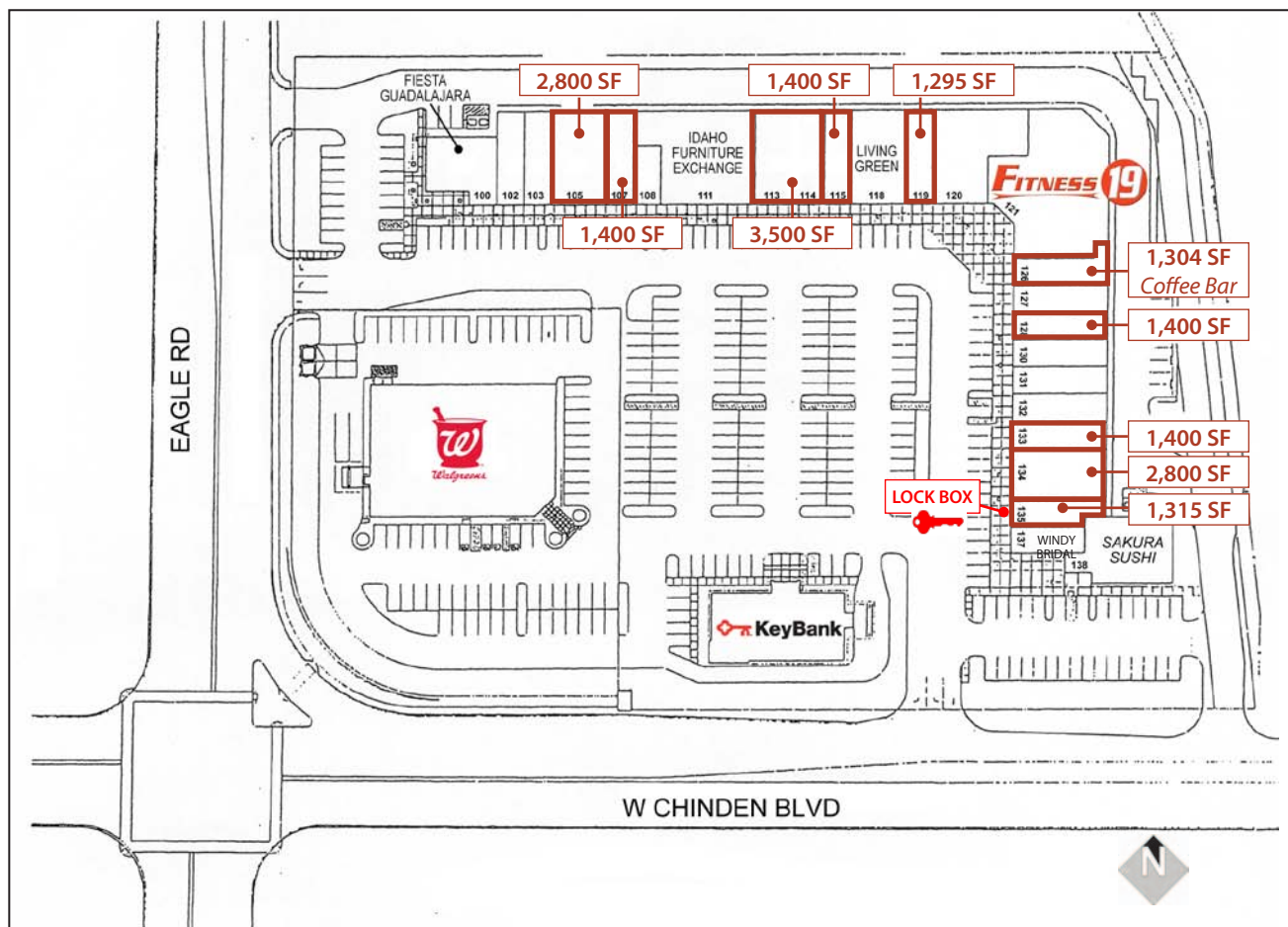
**Lease Term:** 3 - 5 Yrs  
**Lease Type:** NNN  
**Est. NNN:** \$3.68



This information was obtained from sources believed reliable but cannot be guaranteed. Any opinions or estimates are used for example only.

# Eagle Marketplace

NEC Chinden Blvd & Eagle Rd - Eagle, ID  
**RETAIL SPACE FOR LEASE**



This information was obtained from sources believed reliable but cannot be guaranteed. Any opinions or estimates are used for example only.