

Eagle Industrial Center

1750 - 1790 E. State Street - Eagle, ID
INDUSTRIAL SPACE FOR LEASE



Property Information:

Submarket:	Eagle
Available:	Immediately
Bldg Type:	Industrial
Bldg Size:	52,800 SF
Divisible:	Yes
Clear Height:	12' - 15'
Grade Doors:	One
Power:	TBD
Zoning:	C-2
Parking:	Ample
Lease Term:	3-5 Years
Lease Type:	Industrial Gross

Listing Comments:

Located on Old State Street in Eagle.

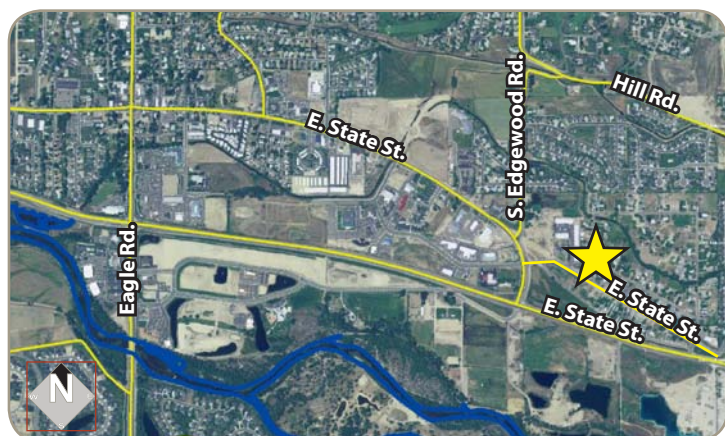
Grade level doors (12' x 10').

Eagle's best industrial option.

Great visibility on State Street.

Available Space:

SPACE:	RSF:	RATE/SF:	MONTHLY:
Suite 1752	4,680 SF	\$0.55	\$3,042
Suite 1768	2,880 SF	\$0.65	\$1,584
Suite 1778	1,440 SF	\$0.55	\$792
Suite 1782	1,440 SF	\$0.55	\$792



Contact:

Chris Pearson, SIOR

Ph: 208.947.0859

Fx: 208.947.0869

chris@tokcommercial.com

www.tokcommercial.com



Gavin Phillips

Ph: 208.947.0812

Fx: 208.947.0869

gavin@tokcommercial.com

www.tokcommercial.com

(10/18/11)

This information was obtained from sources believed reliable but cannot be guaranteed. Any opinions or estimates are used for example only.

Eagle Industrial Center

1750 - 1790 E. State Street - Eagle, ID

INDUSTRIAL SPACE FOR LEASE



This information was obtained from sources believed reliable but cannot be guaranteed. Any opinions or estimates are used for example only.