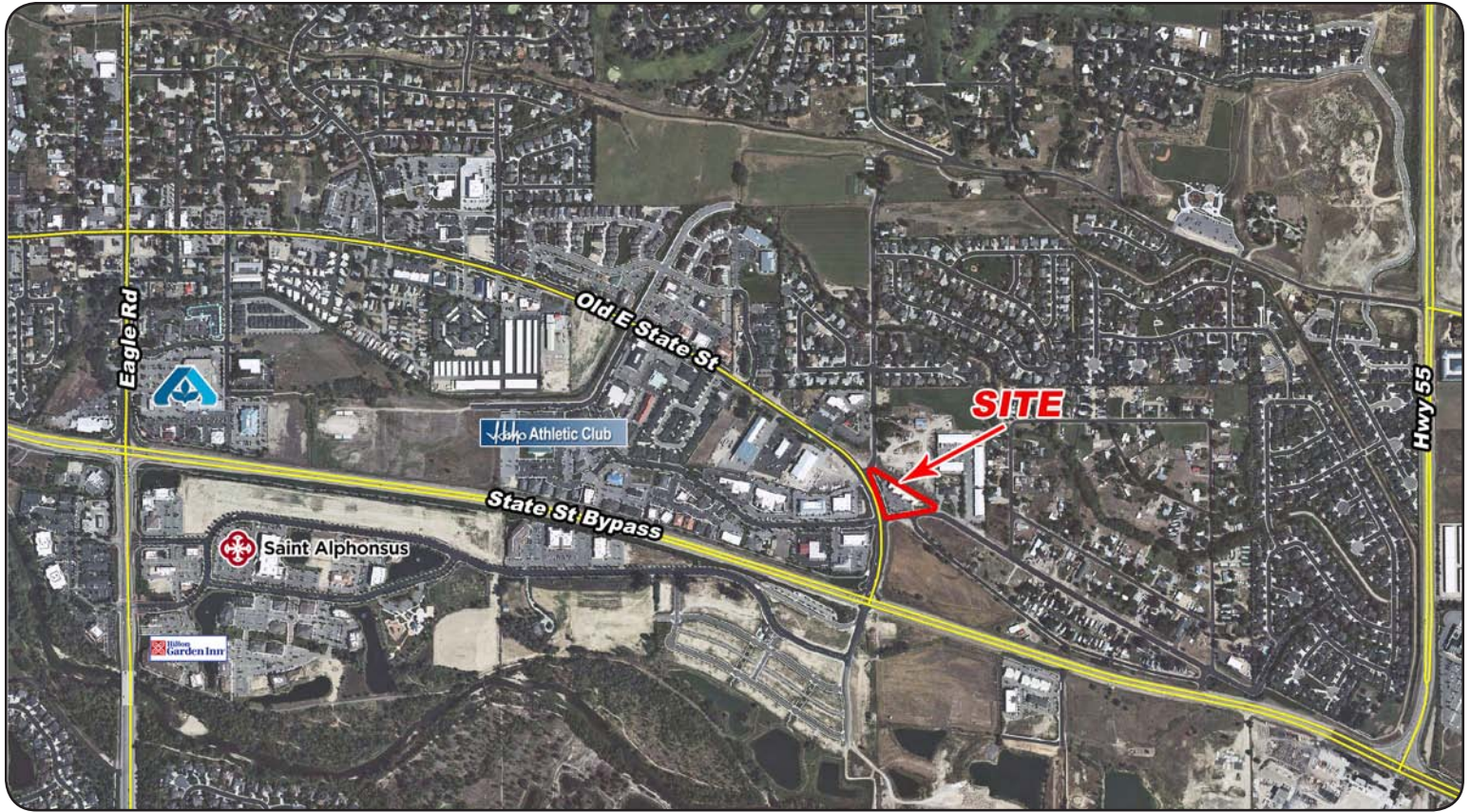


Eagle Clocktower

1580 E. State Street - Eagle, ID
RETAIL SPACE FOR LEASE



Demographics:

Population: 35,028 (3 mi.)
HH Income: \$96,486 (3 mi.)
 2010

Tenants:

Pioneer Federal Credit Union, Story Tellers Fine Portraits, Monkey Dooz and Mallory's Hair Salon

Listing Comments:

Easy access to Highway 44 and Highway 55.
 State Street monument sign.

Available Space:

SPACE:	RSF:	RATE:
Ste 102	1,319 SF	\$14.95
Ste 103	1,715 SF	\$14.95

PLEASE DO NOT DISTURB TENANT

Contact:

Bob Mitchell, CSM

Ph: 208.947.0836

Fx: 208.947.0869

bob@tokcommercial.com

www.tokcommercial.com

Brianna Hansen

Ph: 208.947.5519

Fx: 208.947.0869

brianna@tokcommercial.com

www.tokcommercial.com



Eagle Clocktower

1580 E. State Street - Eagle, ID

RETAIL SPACE FOR LEASE

Property Information:

Submarket: Eagle
Available: 30 day notice
Bldg Type: Retail
Bldg Size: 8,896 SF

Lease Terms:

Lease Term: 3 - 5 Yrs
Lease Type: NNN
Est. NNN: \$5.00/SF

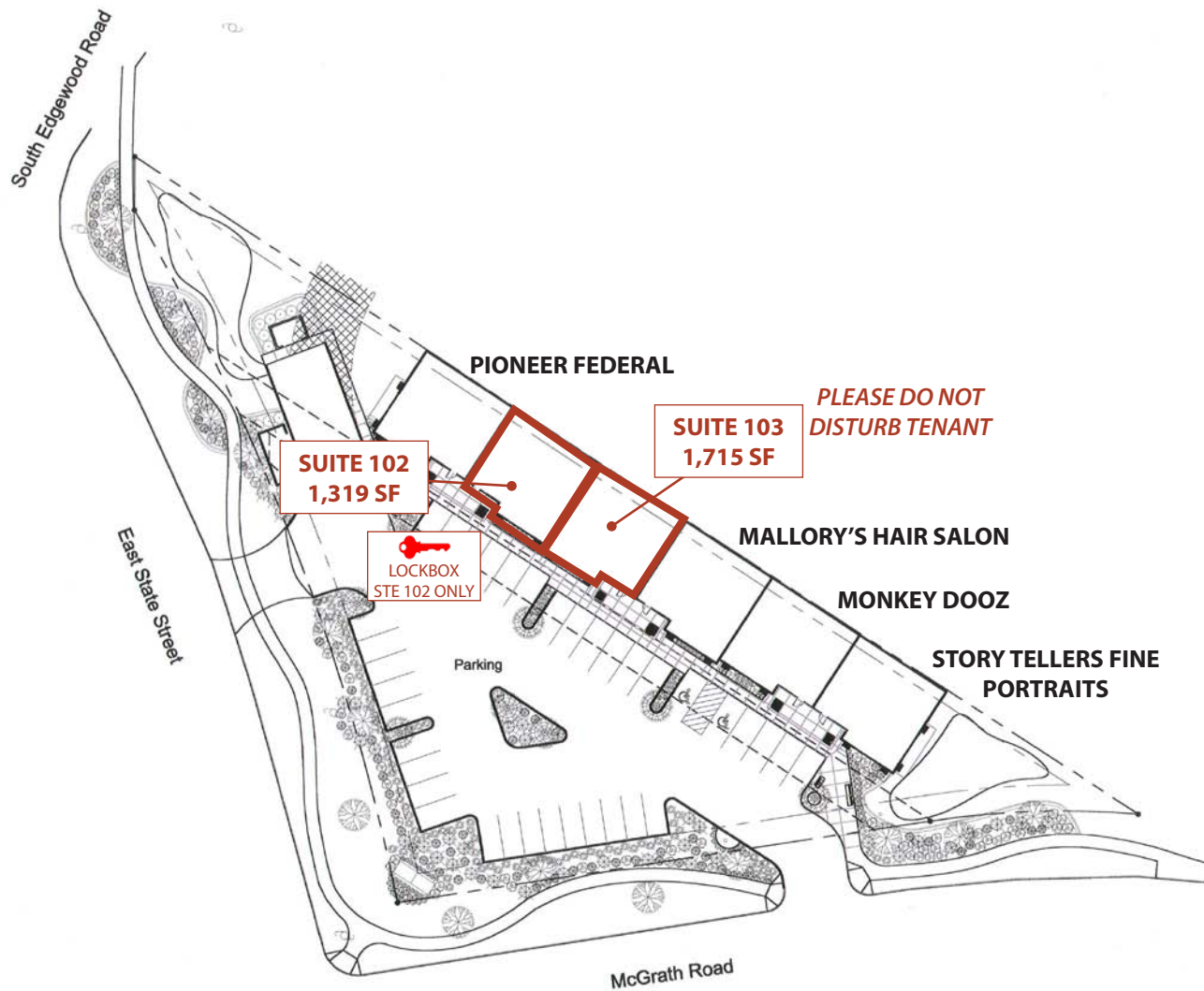


This information was obtained from sources believed reliable but cannot be guaranteed. Any opinions or estimates are used for example only.

Eagle Clocktower

1580 E. State Street - Eagle, ID

RETAIL SPACE FOR LEASE



This information was obtained from sources believed reliable but cannot be guaranteed. Any opinions or estimates are used for example only.