

Dorado Plaza

8850 W Emerald St - Boise, ID
OFFICE SPACE FOR LEASE



Property Information:

Submarket: West
Available: Immediately
Bldg Type: Office
Quality: Class B
Bldg Size: 21,492 SF
Divisible: Yes
of Floors: 1
Parking: 4.6/1000

Lease Terms:

Lease Term: 3-5 years
Lease Type: FLSVEJ
TI Allowance: Negotiable

Listing Comments:

- Excellent parking.
- Easy access to freeway.
- Close to shopping, restaurants and professional services.
- Immediately adjacent to Treasure Valley Hospital.
- All spaces built out and ready to occupy.
- Building signage available.

Available Space:

SPACE:	RSF:	RATE:
Suite 154	4,114 SF	\$14.00/SF \$10.00/SF
Suite 164	7,561 SF	\$14.00/SF

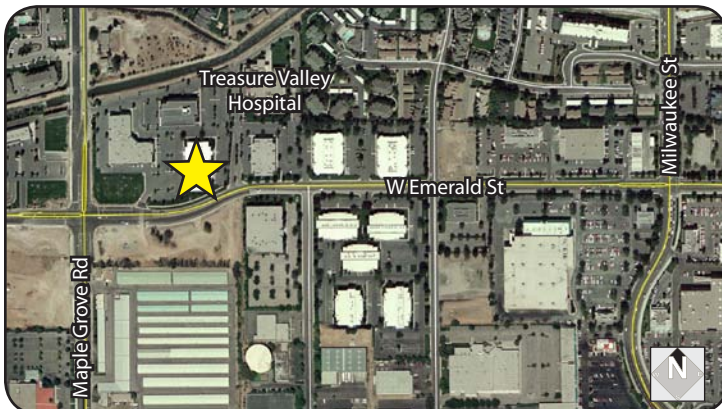
Suites can be combined for 11,675 SF.



Contact:

Al Marino, SIOR
Ph: 208.947.0811
Fx: 208.947.0869
al@tokcommercial.com
www.tokcommercial.com

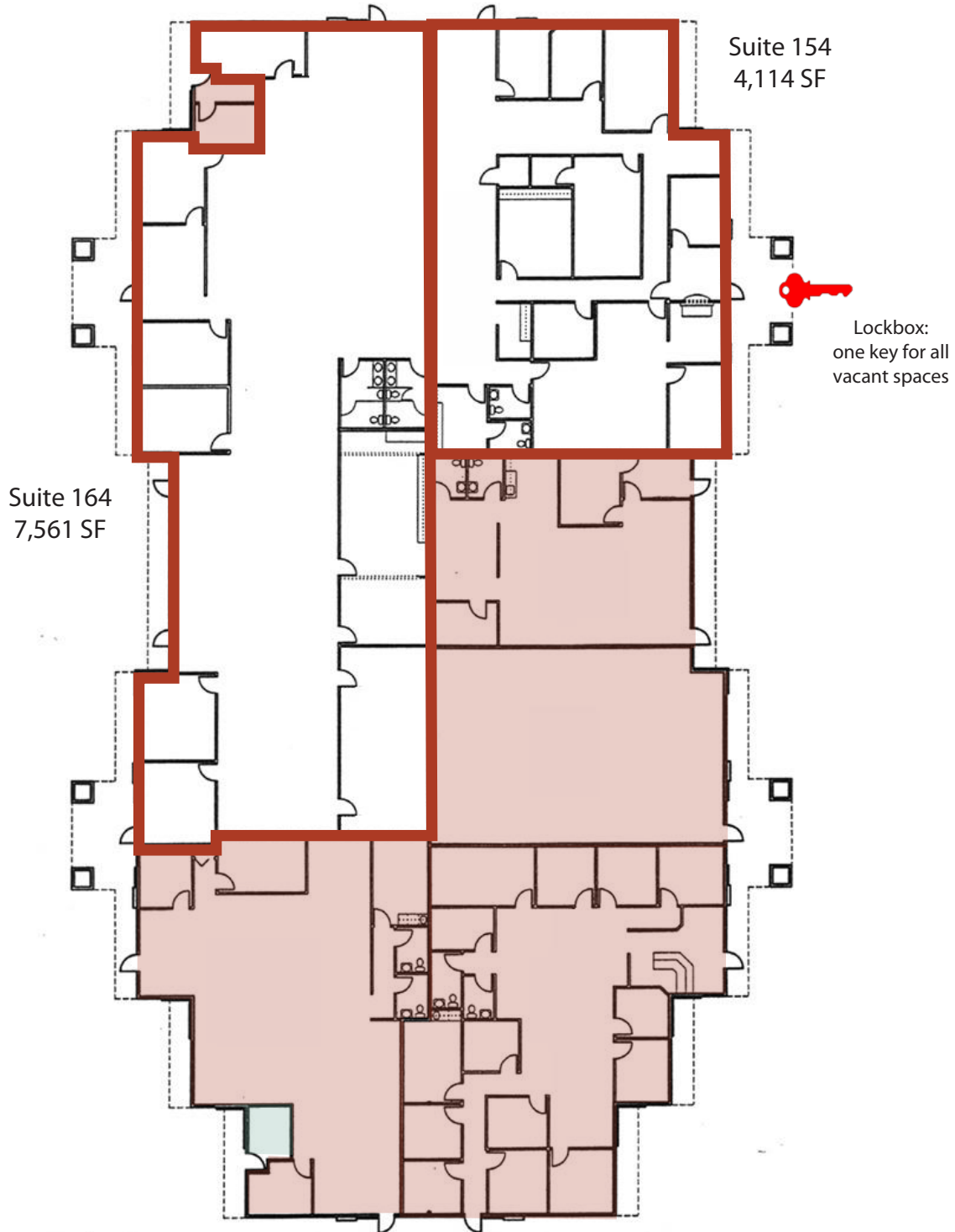
Greg Gaddis
Ph: 208.947.0827
Fx: 208.947.0869
greg@tokcommercial.com
www.tokcommercial.com



Dorado Plaza

8850 W Emerald St - Boise, ID
OFFICE SPACE FOR LEASE

Suites 154 & 164 can be
combined for 11,675 SF.



This information was obtained from sources believed reliable but cannot be guaranteed. Any opinions or estimates are used for example only.