

# C W Moore Plaza

250 S 5th Street - Boise, ID  
**OFFICE SPACE FOR SUBLEASE**



### Property Information:

**Submarket:** Downtown  
**Available:** Immediately  
**Bldg Type:** Office  
**Quality:** Class A  
**Bldg Size:** 106,000 SF  
**Divisible:** Yes  
**# of Floors:** 8

### SubLease Terms:

**SubLease Term:** Until 06/30/2013  
**SubLease Type:** Full Service  
**TI Allowance:** N/A

### Listing Comments:

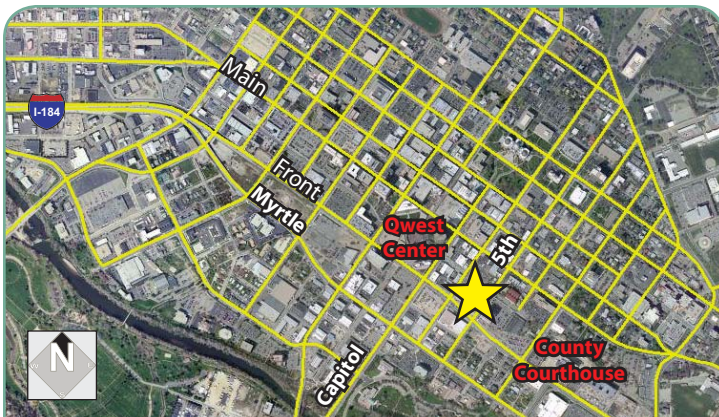
- 8' x 8' engineering cubicles available.
- Break room.
- Great views.
- Cafeteria on the 9th floor Penthouse with outside seating.
- Basement storage and 2 large basement conference rooms.
- Concierge in lobby.
- One block from the Ada County Courthouse.
- Free on-site parking. One stall per 720 square feet.
- Fiberoptic cable is run to the building.

### Available Space:

<b>SPACE:</b>	<b>RSF:</b>	<b>RATE:</b>
Suite 400	13,087 SF	\$16.50/SF
Entire 4th floor, but divisible into smaller sections.		
58 Cubicles		\$275/month
4 Private Offices		\$350/month

Closed & shared conference rooms available.

Sub-Landlord will not demise the space; less than full floor tenants will share the space with other tenants.



### Contact:

**Grove T. Hummert**  
 Ph: 208.947.0804  
 Fx: 208.947.0869  
 grove@tokcommercial.com  
 www.tokcommercial.com

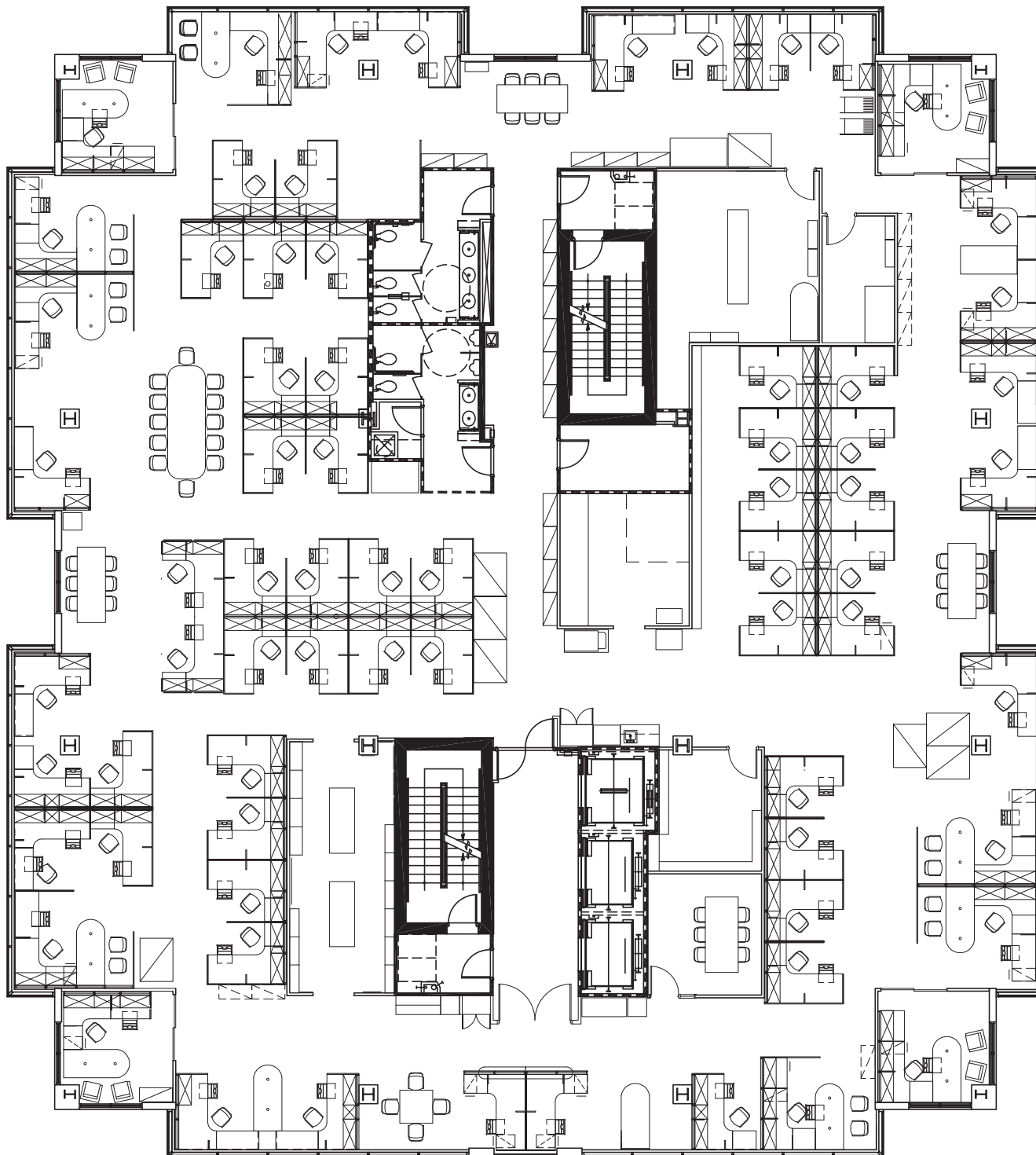
**Patrick Shalz, SIOR**  
 Ph: 208.947.0834  
 Fx: 208.947.0869  
 pat@tokcommercial.com  
 www.tokcommercial.com



# C W Moore Plaza

250 S 5th Street - Boise, ID  
OFFICE SPACE FOR SUBLEASE

Suite 400  
13,087 SF



This information was obtained from sources believed reliable but cannot be guaranteed. Any opinions or estimates are used for example only.