

# Curtis Medical Plaza

1070 N Curtis Rd - Boise, ID  
**OFFICE SPACE FOR LEASE**



## Property Information:

**Submarket:** Central  
**Available:** Immediately  
**Bldg Type:** Medical Office  
**Divisible:** Yes  
**# of Floors:** 2  
**Parking:** 4:1000

## Lease Terms:

**Lease Term:** 3-5 years  
**Lease Type:** NNN  
**TI Allowance:** Negotiable

## Listing Comments:

Excellent location. One block from I-84 Connector and the Curtis off-ramp.

Newly renovated.

Directly across from St. Alphonsus Regional Medical Center.

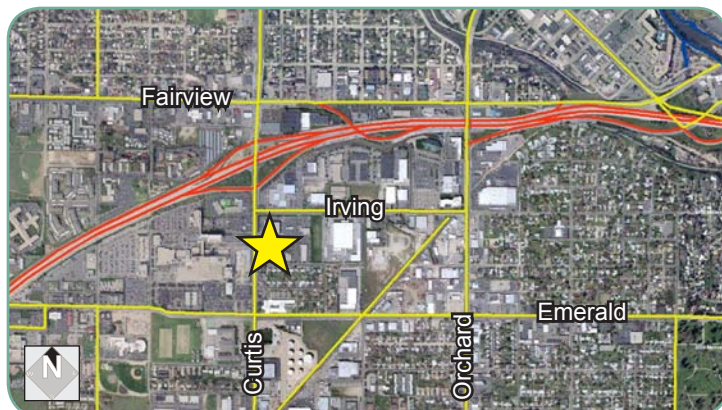
Excellent office set up for medical professionals.

New ownership and management.

## Available Space:

SPACE:	RSF:	RATE:
Suite 110	1,356 SF	\$17.00/SF
Suite 135	1,359 SF	\$17.00/SF
Suite 140	1,440 SF	\$17.00/SF
Suite 150	2,415 SF	\$17.00/SF

Suites 135, 140 & 150 can be combined for 5,214 SF.



## Contact:

### **Patrick Shalz**

Ph: 208.947.0834

Fx: 208.947.0869

pat@tokcommercial.com

www.tokcommercial.com

### **Mark Cleverley**

Ph: 208.947.5507

Fx: 208.947.0869

mark@tokcommercial.com

www.tokcommercial.com

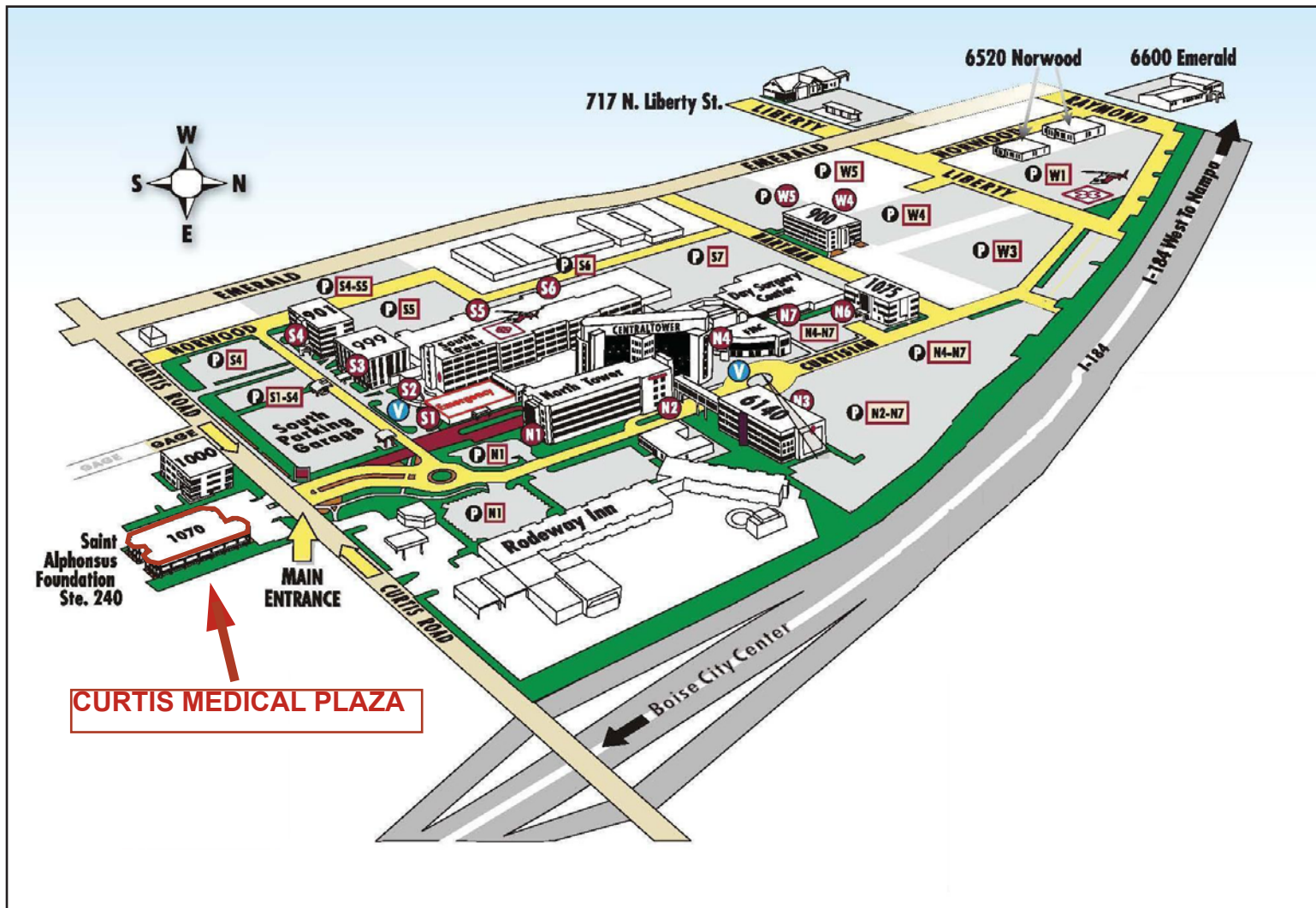


(12/08/11)

This information was obtained from sources believed reliable but cannot be guaranteed. Any opinions or estimates are used for example only.

# Curtis Medical Plaza

1070 N Curtis Rd - Boise, ID  
OFFICE SPACE FOR LEASE



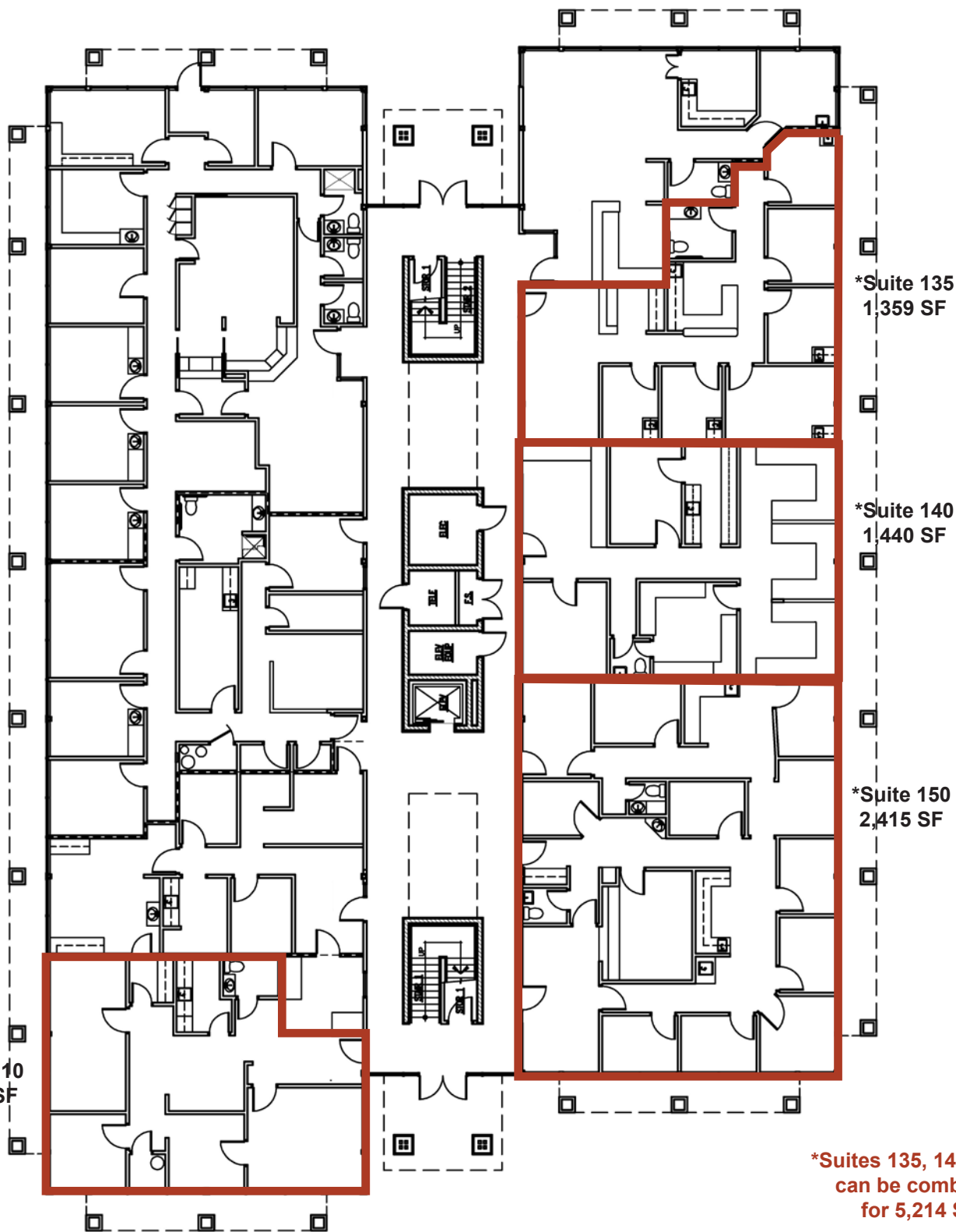
This information was obtained from sources believed reliable but cannot be guaranteed. Any opinions or estimates are used for example only.

# Curtis Medical Plaza

1070 N Curtis Rd - Boise, ID

OFFICE SPACE FOR LEASE

## FIRST FLOOR



This information was obtained from sources believed reliable but cannot be guaranteed. Any opinions or estimates are used for example only.