

# Cherry & Midland Land

Nampa, ID  
**LAND FOR SALE**



### Listing Comments:

Located on the SW corner of Cherry Lane and Midland.

Great location near Treasure Valley Crossing, Treasure Valley Marketplace and proposed Medical Center.

Adjacent to planned 118,000 SF medical office building with St. Luke's and Saltzer Medical Group as tenants.

Easy access to Karcher Interchange and I-84.

Nampa Comprehensive Plan designation allows commercial and/or industrial use.

### Available:

**Size:** 35.47 Acres

**Price:** \$4.95/SF

**Zoning:** AG, Agricultural, Canyon County

**Utilities:** To Site

### Contact:

**Michael J. Ballantyne, CCIM**

PH: 208.947.0831

FX: 208.947.0869

mjb@tokcommercial.com

www.tokcommercial.com

**Bob Mitchell, CSM**

PH: 208.947.0836

FX: 208.947.0869

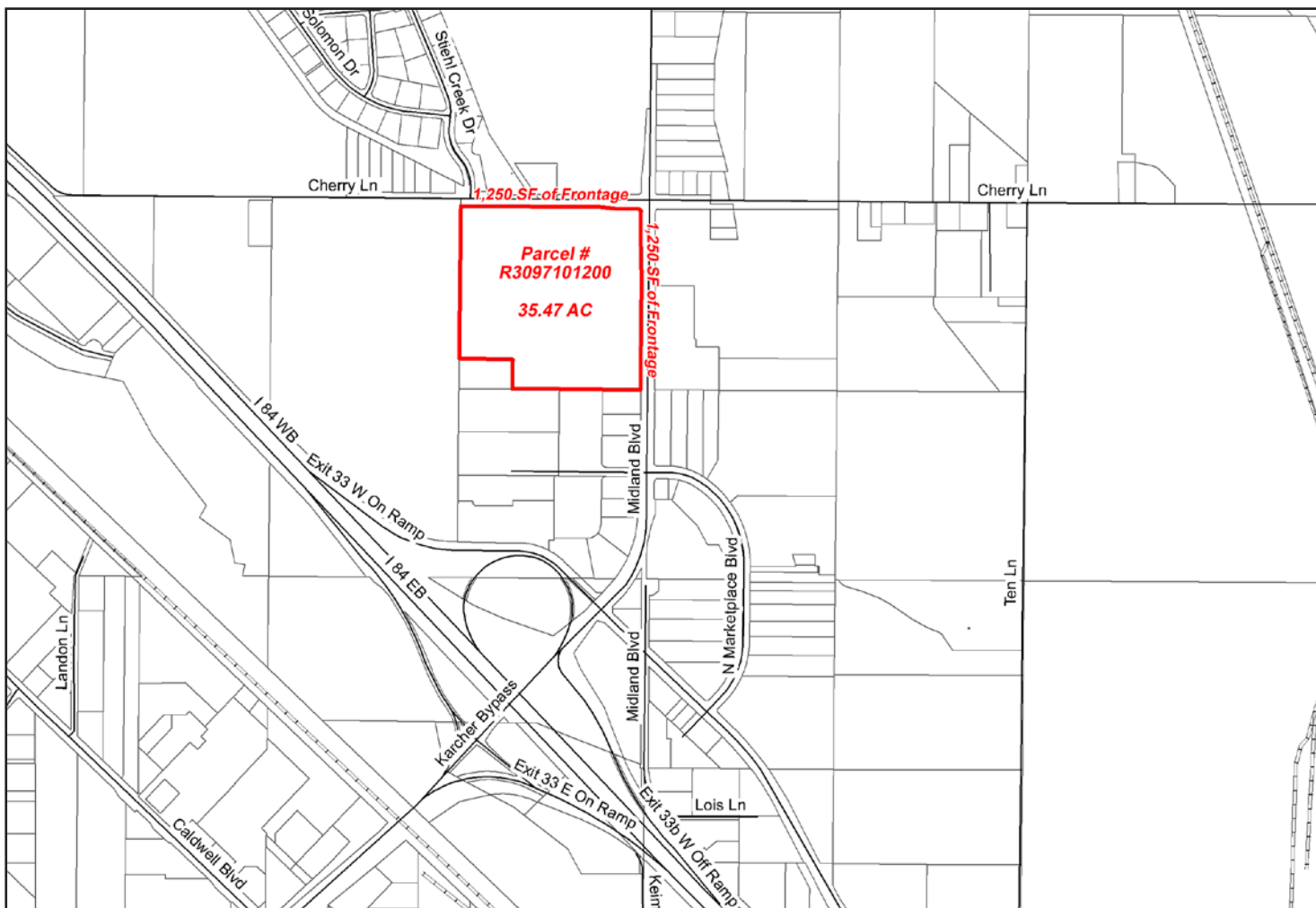
bob@tokcommercial.com

www.tokcommercial.com



# Cherry & Midland Land

Nampa, ID  
LAND FOR SALE



This information was obtained from sources believed reliable but cannot be guaranteed. Any opinions or estimates are used for example only.