

Chase Plaza

199 N Capitol Blvd - Boise, ID
OFFICE SPACE FOR LEASE OR SALE

\$110/SF



Property Information:

Submarket: Downtown
Available: Immediately
Bldg Type: Office
Quality: Class A
Bldg Size: 67,866 SF
Divisible: No
of Floors: 10
Parking: Public/Attached Garage

Lease Terms:

Type: Tenant pays utilities
TI Allowance: As Is

Listing Comments:

Excellent downtown location.
Close to restaurants, hotels, shopping and services.
Built-out and ready for immediate occupancy.
Parking available in attached garage - with direct access to building.
Storage available on site.
Rare ownership opportunity downtown.

Available Space:

SPACE:	APPROXIMATE SF:	RATE:
Suite 503	3,057 SF	\$11.00/SF

Sale Terms:

Sale Price: \$339,000 (\$110/SF)

4% Commission to Buyer's Agent!



Contact:

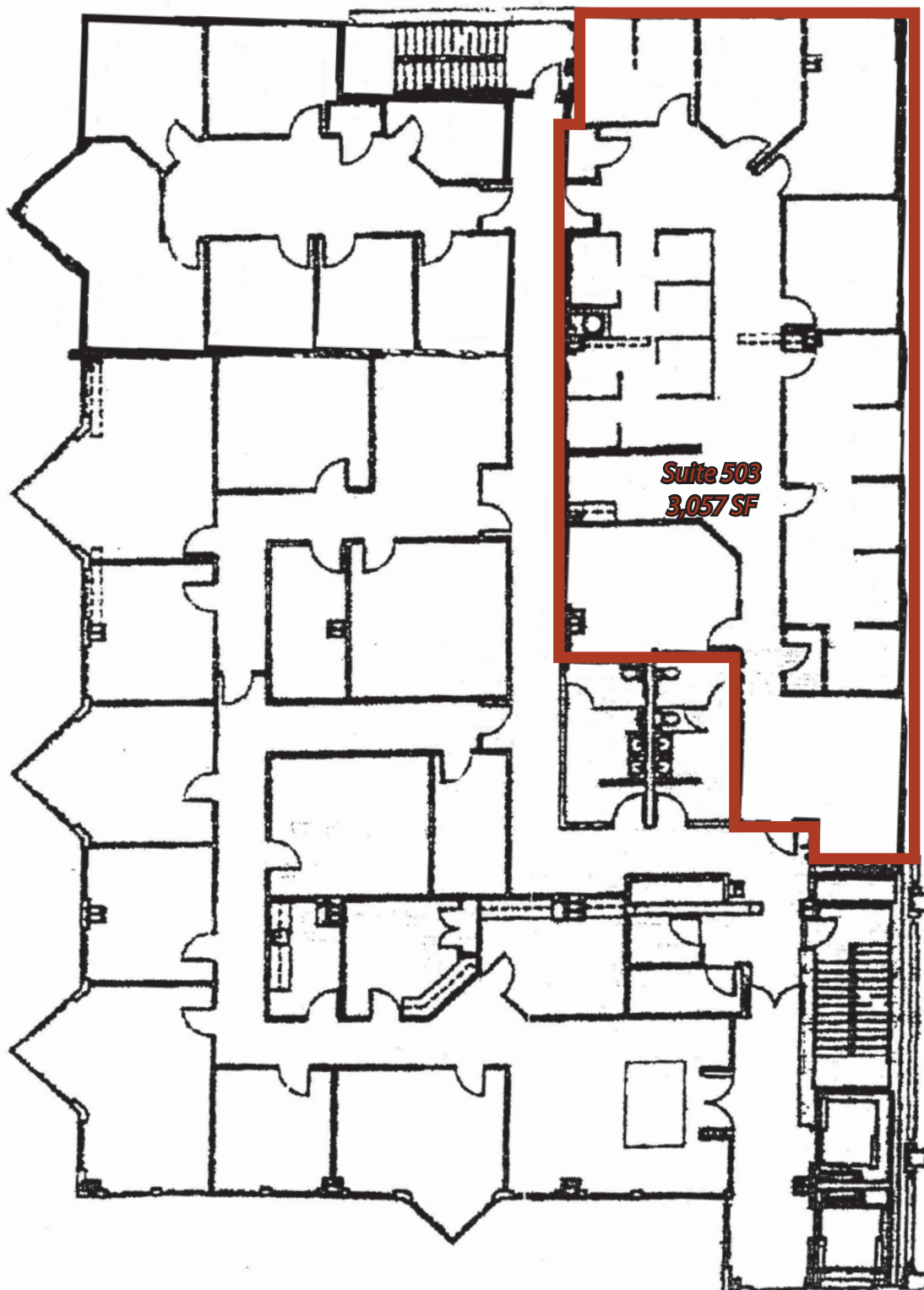
Greg Gaddis
Ph: 208.947.0827
Fx: 208.947.0869
greg@tokcommercial.com
www.tokcommercial.com

Al Marino, SIOR
Ph: 208.947.0811
Fx: 208.947.0869
al@tokcommercial.com
www.tokcommercial.com



Chase Plaza

199 N Capitol Blvd - Boise, ID
OFFICE SPACE FOR LEASE OR SALE



This information was obtained from sources believed reliable but cannot be guaranteed. Any opinions or estimates are used for example only.