

Central Park Commerce

Building B - 2240 S. Cole Road - Boise, ID
WAREHOUSE SPACE FOR LEASE



Property Information:

Submarket:	Southwest
Bldg Type:	Industrial
Bldg Size:	26,180 SF
Clear Height:	20' - 22'
Dock Doors:	Yes
Grade Level:	Yes
Power:	Ample
Zoning:	M-3
Parking:	Ample
Lease Term:	3 - 5 Years
Lease Type:	NNN
NNN Costs:	\$0.16/SF (Estimate)

Listing Comments:

- Flexible, multi-use, dock-high building.
- Excellent central location.
- Close to restaurants and services.
- Only 1/2 mile from I-84.

Available Space:

SPACE:	RSF:	RATE/SF:	MONTHLY:
Suite 130-B	Whse 4,335 SF	\$0.30	\$1,300.50 + NNN
	<i>"As Is" storage only. Can build-out an office and restroom to suit.</i>		
Suite 140	Office 503 SF		
	Whse 2,447 SF		
	2,950 SF	\$0.39	\$1,150.50 + NNN

**Contact Agent for Showing
Do Not Disturb Tenant**



Contact:

Dan Minnaert, SIOR, CCIM

Ph: 208.947.0845
Fx: 208.947.0869
dan@tokcommercial.com
www.tokcommercial.com

Devin Pierce

Ph: 208.947.0850
Fx: 208.947.0869
devin@tokcommercial.com
www.tokcommercial.com



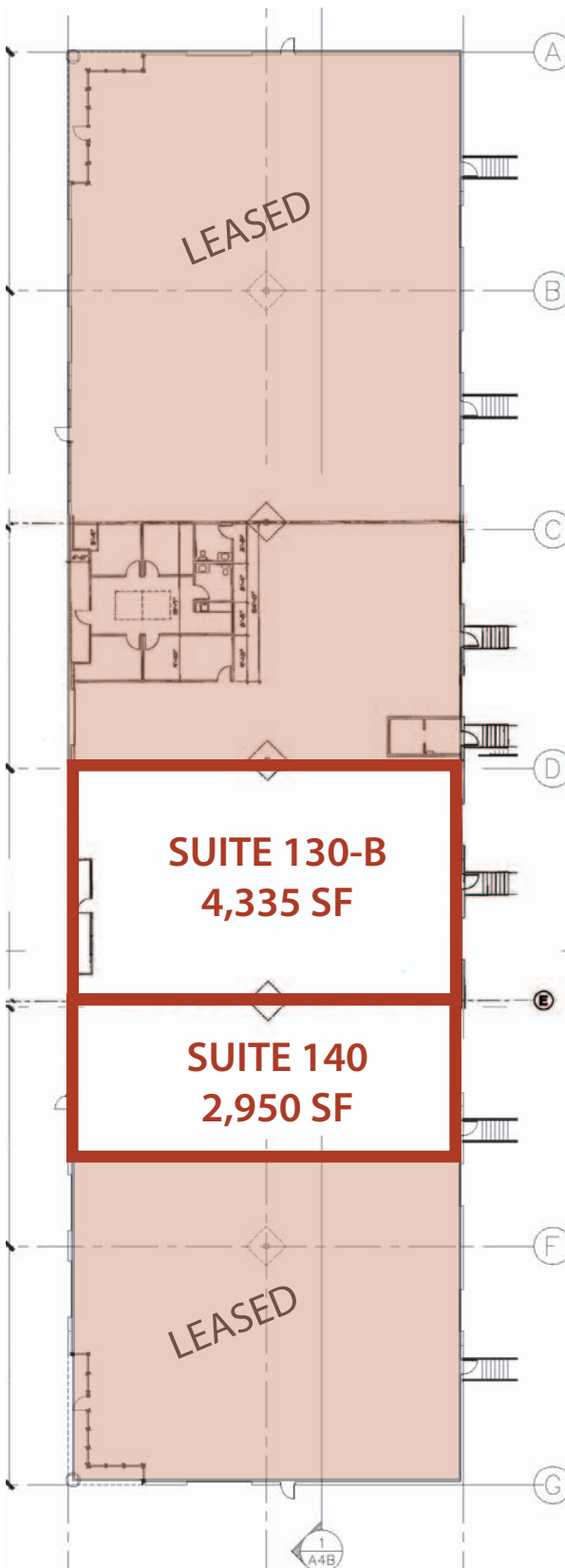
(03/14/12)

This information was obtained from sources believed reliable but cannot be guaranteed. Any opinions or estimates are used for example only.

Central Park Commerce

Building B - 2240 S. Cole Road - Boise, ID

WAREHOUSE SPACE FOR LEASE



This information was obtained from sources believed reliable but cannot be guaranteed. Any opinions or estimates are used for example only.