

Broadmore Office

136 N. Broadmore - Nampa, ID
OFFICE SPACE FOR LEASE



Property Information:

Submarket: Caldwell Blvd.
Available: Immediately
Bldg Type: Office
Quality: Class A
Bldg Size: 6,765 SF
Divisible: Yes
of Floors: 2
Parking: Ample

Lease Terms:

Lease Term: 3-5 years
Lease Type: FLSVEJ
TI Allowance: Negotiable

Listing Comments:

- Good access to I-84 with signage on Nampa Blvd.
- Views of golf course
- Private patios.
- Common area finished - ready for Tenant Improvements.
- Suites can be combined to accommodate tenant requirements.

Available Space:

SPACE:	RSF:	RATE:
Ste 102	2,257 SF	\$15.00/SF
Ste 201	972 SF	
Ste 202	751 SF	
Total	1,723 SF	



Contact:

Chris Pearson, SIOR

Ph: 208.947.0859
 Fx: 208.947.0869
 chris@tokcommercial.com
 www.tokcommercial.com

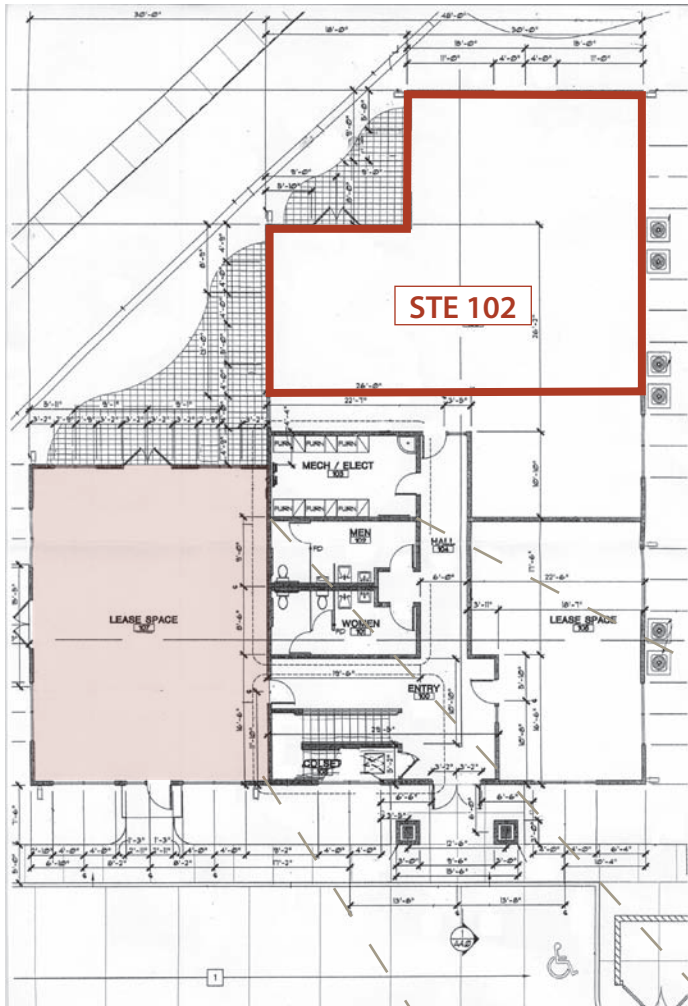
Mark Cleverley

Ph: 208.947.5507
 Fx: 208.947.0869
 markc@tokcommercial.com
 www.tokcommercial.com

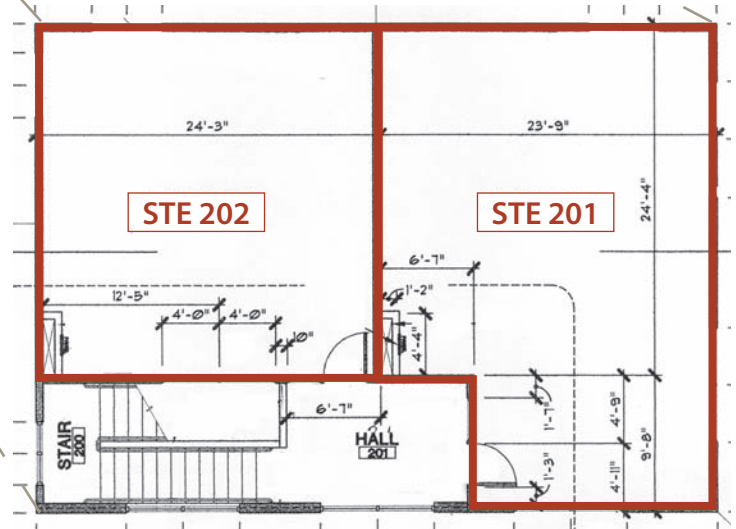


Broadmore Office

136 N. Broadmore - Nampa, ID
OFFICE SPACE FOR LEASE



1st FLOOR



2nd FLOOR

This information was obtained from sources believed reliable but cannot be guaranteed. Any opinions or estimates are used for example only.